

## Product datasheet

### Anti-PPA2 antibody [EPR13087(B)] ab177935

Recombinant RabMAb

[3 References](#) [4 Images](#)

#### Overview

<b>Product name</b>	Anti-PPA2 antibody [EPR13087(B)]
<b>Description</b>	Rabbit monoclonal [EPR13087(B)] to PPA2
<b>Host species</b>	Rabbit
<b>Tested applications</b>	<b>Suitable for:</b> IP, Flow Cyt (Intra), WB <b>Unsuitable for:</b> ICC/IF or IHC-P
<b>Species reactivity</b>	<b>Reacts with:</b> Human
<b>Immunogen</b>	Synthetic peptide. This information is proprietary to Abcam and/or its suppliers.
<b>Positive control</b>	Human fetal liver, HepG2, human fetal kidney, U87-MG and 293T lysates; 293 cells.
<b>General notes</b>	<p>This product is a recombinant monoclonal antibody, which offers several advantages including:</p> <ul style="list-style-type: none"> <li>- High batch-to-batch consistency and reproducibility</li> <li>- Improved sensitivity and specificity</li> <li>- Long-term security of supply</li> <li>- Animal-free production</li> </ul> <p>For more information <a href="#">see here</a>.</p> <p>Our RabMAb<sup>®</sup> technology is a patented hybridoma-based technology for making rabbit monoclonal antibodies. For details on our patents, please refer to <a href="#">RabMAb<sup>®</sup> patents</a>.</p> <p>Mouse, Rat: We have preliminary internal testing data to indicate this antibody may not react with these species. Please contact us for more information.</p>

#### Properties

<b>Form</b>	Liquid
<b>Storage instructions</b>	Shipped at 4°C. Store at +4°C short term (1-2 weeks). Upon delivery aliquot. Store at -20°C long term. Avoid freeze / thaw cycle.
<b>Storage buffer</b>	<p>pH: 7.20</p> <p>Preservative: 0.01% Sodium azide</p> <p>Constituents: 9% PBS, 40% Glycerol (glycerin, glycerine), 0.05% BSA, 50% Tissue culture supernatant</p>
<b>Purity</b>	Tissue culture supernatant

<b>Clonality</b>	Monoclonal
<b>Clone number</b>	EPR13087(B)
<b>Isotype</b>	IgG

## Applications

**The Abpromise guarantee** Our **Abpromise guarantee** covers the use of ab177935 in the following tested applications. The application notes include recommended starting dilutions; optimal dilutions/concentrations should be determined by the end user.

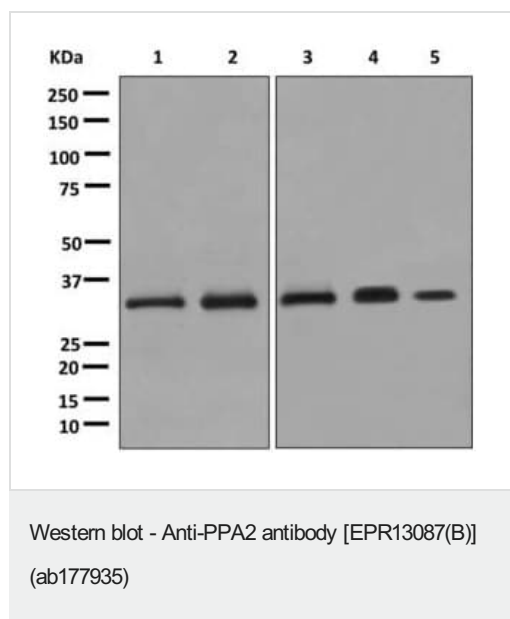
Application	Abreviews	Notes
IP		1/10 - 1/100.
Flow Cyt (Intra)		1/10 - 1/100. <b>ab172730</b> - Rabbit monoclonal IgG, is suitable for use as an isotype control with this antibody.
WB		1/1000 - 1/10000. Predicted molecular weight: 38 kDa.

**Application notes** Is unsuitable for ICC/IF or IHC-P.

## Target

<b>Tissue specificity</b>	Detected in brain, gastric carcinoma, lung, ovary, skeletal muscle, umbilical cord blood and a cell line derived from kidney proximal tubule epithelium.
<b>Sequence similarities</b>	Belongs to the PPase family.
<b>Cellular localization</b>	Mitochondrion.

## Images



**All lanes** : Anti-PPA2 antibody [EPR13087(B)] (ab177935) at 1/1000 dilution

**Lane 1** : Human fetal liver tissue lysate

**Lane 2** : HepG2 cell lysate

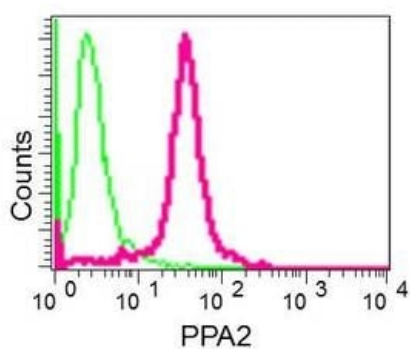
**Lane 3** : Human fetal kidney tissue lysate

**Lane 4** : U-87 MG (Human glioblastoma-astrocytoma epithelial cell line) cell lysate

**Lane 5** : 293T (Human embryonic kidney epithelial cell) cell lysate

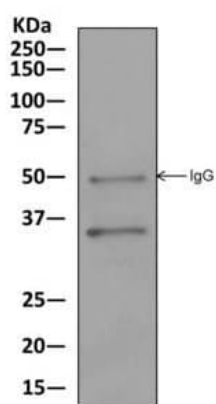
Lysates/proteins at 10 µg per lane.

**Predicted band size:** 38 kDa



Flow Cytometry (Intracellular) - Anti-PPA2 antibody  
[EPR13087(B)] (ab177935)

Intracellular flow cytometric analysis of permeabilized 293 cells labeling PPA2 with ab177935 at 1/10 dilution (red) compared to a rabbit IgG negative control (green).



Immunoprecipitation - Anti-PPA2 antibody  
[EPR13087(B)] (ab177935)

Western blot analysis on immunoprecipitation pellet from U87-MG cell lysate using ab177935.

### Why choose a recombinant antibody?



**Research with confidence**  
Consistent and reproducible results



**Long-term and scalable supply**  
Recombinant technology



**Success from the first experiment**  
Confirmed specificity



**Ethical standards compliant**  
Animal-free production

Anti-PPA2 antibody [EPR13087(B)] (ab177935)

**Please note:** All products are "FOR RESEARCH USE ONLY. NOT FOR USE IN DIAGNOSTIC PROCEDURES"

## **Our Abpromise to you: Quality guaranteed and expert technical support**

---

- Replacement or refund for products not performing as stated on the datasheet
- Valid for 12 months from date of delivery
- Response to your inquiry within 24 hours
  
- We provide support in Chinese, English, French, German, Japanese and Spanish
- Extensive multi-media technical resources to help you
- We investigate all quality concerns to ensure our products perform to the highest standards

If the product does not perform as described on this datasheet, we will offer a refund or replacement. For full details of the Abpromise, please visit <https://www.abcam.com/abpromise> or contact our technical team.

## **Terms and conditions**

---

- Guarantee only valid for products bought direct from Abcam or one of our authorized distributors