




Product datasheet

Anti-PPAP2A antibody [OT11H4] ab170151

6 Images

Overview

| | |
|----------------------------|---|
| Product name | Anti-PPAP2A antibody [OT11H4] |
| Description | Mouse monoclonal [OT11H4] to PPAP2A |
| Host species | Mouse |
| Tested applications | Suitable for: WB, IHC-P |
| Species reactivity | Reacts with: Human Predicted to work with: Guinea pig  |
| Immunogen | Recombinant full length protein corresponding to Human PPAP2A aa 1 to the C-terminus. NP_003702 Database link: O14494 <div>  Run BLAST with  Run BLAST with </div> |
| Positive control | WB: HEK-293T cell lysate transfected with pCMV6-ENTRY PPAP2A cDNA. IHC-P: Human kidney, kidney carcinoma, liver, endometrium adenocarcinoma and lymph node tissues. |
| General notes | <p>The Life Science industry has been in the grips of a reproducibility crisis for a number of years. Abcam is leading the way in addressing this with our range of recombinant monoclonal antibodies and knockout edited cell lines for gold-standard validation. Please check that this product meets your needs before purchasing.</p> <p>If you have any questions, special requirements or concerns, please send us an inquiry and/or contact our Support team ahead of purchase. Recommended alternatives for this product can be found below, along with publications, customer reviews and Q&As</p> |

Properties

| | |
|-----------------------------|---|
| Form | Liquid |
| Storage instructions | Shipped at 4°C. Store at +4°C short term (1-2 weeks). Upon delivery aliquot. Store at -20°C long term. Avoid freeze / thaw cycle. |
| Storage buffer | pH: 7.30 Preservative: 0.02% Sodium azide Constituents: PBS, 50% Glycerol, 1% BSA |
| Purity | Affinity purified |
| Purification notes | Purified from cell culture supernatant by affinity chromatography |
| Clonality | Monoclonal |

| | |
|--------------|--------|
| Clone number | OT11H4 |
| Isotype | IgG1 |

Applications

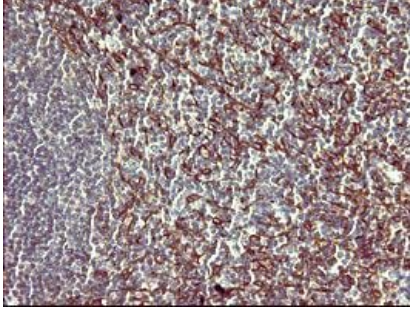
The Abpromise guarantee Our **Abpromise guarantee** covers the use of ab170151 in the following tested applications. The application notes include recommended starting dilutions; optimal dilutions/concentrations should be determined by the end user.

| Application | Abreviews | Notes |
|-------------|-----------|--|
| WB | | 1/500. Predicted molecular weight: 32 kDa. |
| IHC-P | | 1/150. |

Target

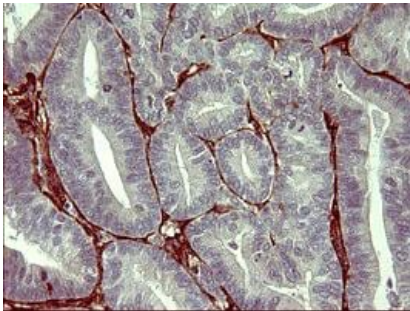
| | |
|---|--|
| Function | Broad-specificity phosphohydrolase that dephosphorylates exogenous bioactive glycerolipids and sphingolipids. Catalyzes the conversion of phosphatidic acid (PA) to diacylglycerol (DG). Pivotal regulator of lysophosphatidic acid (LPA) signaling in the cardiovascular system. Major enzyme responsible of dephosphorylating LPA in platelets, which terminates signaling actions of LPA. May control circulating, and possibly also regulate localized, LPA levels resulting from platelet activation. It has little activity towards ceramide-1-phosphate (C-1-P) and sphingosine-1-phosphate (S-1-P). The relative catalytic efficiency is LPA > PA > S-1-P > C-1-P. It's down-regulation may contribute to the development of colon adenocarcinoma. |
| Tissue specificity | Ubiquitously expressed with highest expression found in prostate. Isoform 1 is predominant in kidney, lung, placenta and liver. Isoform 2 is predominant in heart and pancreas. Found to be down-regulated in colon adenocarcinomas. |
| Sequence similarities | Belongs to the PA-phosphatase related phosphoesterase family. |
| Post-translational modifications | N-glycosylated. Contains high-mannose oligosaccharides. |
| Cellular localization | Cell membrane. |

Images



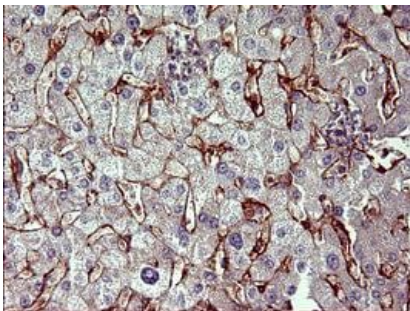
Paraffin-embedded human lymph node tissue stained for PPAP2A using ab170151 at 1/150 dilution in immunohistochemical analysis.

Immunohistochemistry (Formalin/PFA-fixed paraffin-embedded sections) - Anti-PPAP2A antibody [OT11H4] (ab170151)



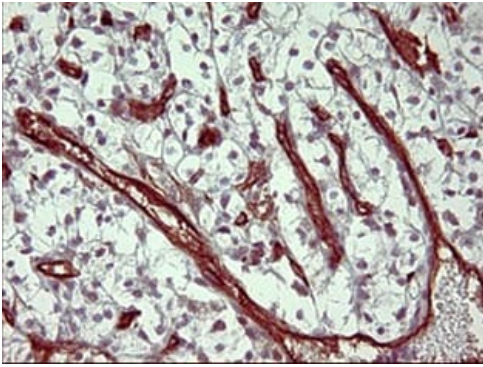
Paraffin-embedded human endometrium adenocarcinoma tissue stained for PPAP2A using ab170151 at 1/150 dilution in immunohistochemical analysis.

Immunohistochemistry (Formalin/PFA-fixed paraffin-embedded sections) - Anti-PPAP2A antibody [OT11H4] (ab170151)



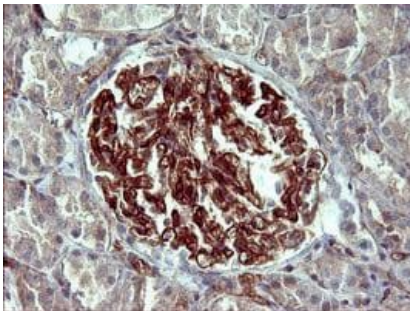
Paraffin-embedded human liver tissue stained for PPAP2A using ab170151 at 1/150 dilution in immunohistochemical analysis.

Immunohistochemistry (Formalin/PFA-fixed paraffin-embedded sections) - Anti-PPAP2A antibody [OT11H4] (ab170151)



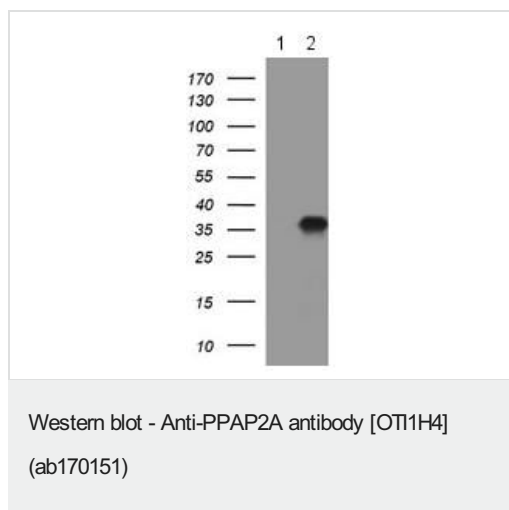
Paraffin-embedded human kidney carcinoma tissue stained for PPAP2A using ab170151 at 1/150 dilution in immunohistochemical analysis.

Immunohistochemistry (Formalin/PFA-fixed paraffin-embedded sections) - Anti-PPAP2A antibody
[OT11H4] (ab170151)



Paraffin-embedded human kidney tissue stained for PPAP2A using ab170151 at 1/150 dilution in immunohistochemical analysis.

Immunohistochemistry (Formalin/PFA-fixed paraffin-embedded sections) - Anti-PPAP2A antibody
[OT11H4] (ab170151)



All lanes : Anti-PPAP2A antibody [OT11H4] (ab170151) at 1/500 dilution

Lane 1 : HEK-293T (human epithelial cell line from embryonic kidney transformed with large T antigen) cell lysate transfected with pCMV6-ENTRY control

Lane 2 : HEK-293T cell lysate transfected with pCMV6-ENTRY PPAP2A cDNA

Lysates/proteins at 5 µg per lane.

Predicted band size: 32 kDa

Please note: All products are "FOR RESEARCH USE ONLY. NOT FOR USE IN DIAGNOSTIC PROCEDURES"

Our Abpromise to you: Quality guaranteed and expert technical support

- Replacement or refund for products not performing as stated on the datasheet
- Valid for 12 months from date of delivery
- Response to your inquiry within 24 hours
- We provide support in Chinese, English, French, German, Japanese and Spanish
- Extensive multi-media technical resources to help you
- We investigate all quality concerns to ensure our products perform to the highest standards

If the product does not perform as described on this datasheet, we will offer a refund or replacement. For full details of the Abpromise, please visit <https://www.abcam.com/abpromise> or contact our technical team.

Terms and conditions

- Guarantee only valid for products bought direct from Abcam or one of our authorized distributors