


Anti-PPIL1 antibody ab127199

2 Images

Overview

Product name	Anti-PPIL1 antibody
Description	Rabbit polyclonal to PPIL1
Host species	Rabbit
Tested applications	Suitable for: WB, ICC/IF
Species reactivity	Reacts with: Human Predicted to work with: Mouse, Rat, Cow, Zebrafish 
Immunogen	Recombinant protein fragment corresponding to a region within amino acids 1 and 116 of Human PPIL1 (UniProt Q9Y3C6).
Positive control	U87-MG whole cell lysate, MCF7 cell lysate; MCF7 cell
General notes	<p>The Life Science industry has been in the grips of a reproducibility crisis for a number of years. Abcam is leading the way in addressing this with our range of recombinant monoclonal antibodies and knockout edited cell lines for gold-standard validation. Please check that this product meets your needs before purchasing.</p> <p>If you have any questions, special requirements or concerns, please send us an inquiry and/or contact our Support team ahead of purchase. Recommended alternatives for this product can be found below, along with publications, customer reviews and Q&As</p>

Properties

Form	Liquid
Storage instructions	Shipped at 4°C. Upon delivery aliquot and store at -20°C or -80°C. Avoid repeated freeze / thaw cycles.
Storage buffer	pH: 7.00 Preservative: 0.01% Thimerosal (merthiolate) Constituents: 78.99% PBS, 1% BSA, 20% Glycerol (glycerin, glycerine)
Purity	Immunogen affinity purified
Clonality	Polyclonal
Isotype	IgG

Applications

The Abpromise guarantee

Our **Abpromise guarantee** covers the use of ab127199 in the following tested applications.

The application notes include recommended starting dilutions; optimal dilutions/concentrations should be determined by the end user.

Application	Abreviews	Notes
WB		1/500 - 1/3000. Predicted molecular weight: 18 kDa.
ICC/IF		1/100 - 1/500.

Target

Function

PPases accelerate the folding of proteins. It catalyzes the cis-trans isomerization of proline imidic peptide bonds in oligopeptides. May be involved in pre-mRNA splicing.

Tissue specificity

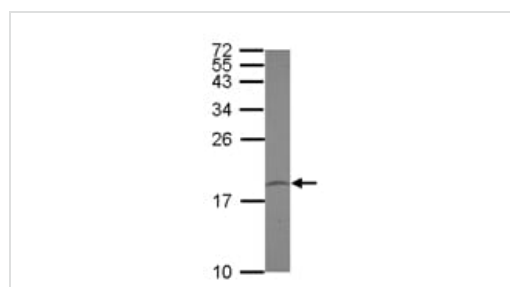
Ubiquitous, with the most abundant expression in heart and skeletal muscle.

Sequence similarities

Belongs to the cyclophilin-type PPase family. PPIL1 subfamily.

Contains 1 PPase cyclophilin-type domain.

Images

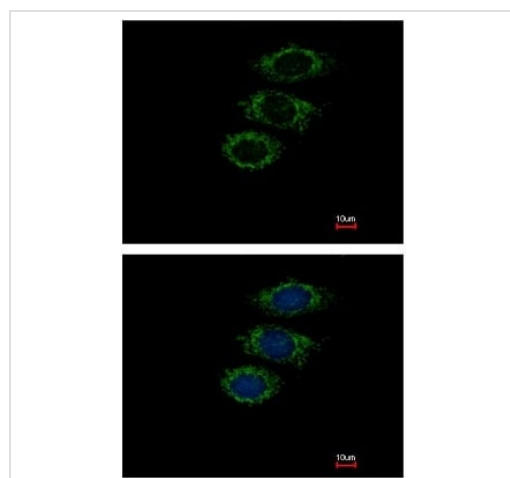


Western blot - Anti-PPIL1 antibody (ab127199)

Anti-PPIL1 antibody (ab127199) at 1/1000 dilution + U-87 MG whole cell lysate at 30 µg

Predicted band size: 18 kDa

15% SDS-PAGE



Immunocytochemistry/ Immunofluorescence - Anti-PPIL1 antibody (ab127199)

ab127199, at a 1/500 dilution, staining PPIL1 in paraformaldehyde fixed MCF7 cells by Immunofluorescence.

The lower image was co-stained with Hoechst 33342.

Please note: All products are "FOR RESEARCH USE ONLY. NOT FOR USE IN DIAGNOSTIC PROCEDURES"

Our Abpromise to you: Quality guaranteed and expert technical support

- Replacement or refund for products not performing as stated on the datasheet
- Valid for 12 months from date of delivery
- Response to your inquiry within 24 hours

- We provide support in Chinese, English, French, German, Japanese and Spanish
- Extensive multi-media technical resources to help you
- We investigate all quality concerns to ensure our products perform to the highest standards

If the product does not perform as described on this datasheet, we will offer a refund or replacement. For full details of the Abpromise, please visit <https://www.abcam.com/abpromise> or contact our technical team.

Terms and conditions

- Guarantee only valid for products bought direct from Abcam or one of our authorized distributors