

## Product datasheet

### Anti-PPM1E antibody [EPR8721] ab137122

Recombinant RabMAb

[1 References](#) [3 Images](#)

#### Overview

Product name	Anti-PPM1E antibody [EPR8721]
Description	Rabbit monoclonal [EPR8721] to PPM1E
Host species	Rabbit
Tested applications	<b>Suitable for:</b> WB, IHC-P <b>Unsuitable for:</b> Flow Cyt or ICC/IF
Species reactivity	<b>Reacts with:</b> Human
Immunogen	Synthetic peptide within Human PPM1E aa 200-300. The exact sequence is proprietary.
Positive control	SH-SY5Y, Human hypothalamus, and Human hippocampus lysates, Human brain tissue
General notes	<p>This product is a recombinant monoclonal antibody, which offers several advantages including:</p> <ul style="list-style-type: none"> <li>- High batch-to-batch consistency and reproducibility</li> <li>- Improved sensitivity and specificity</li> <li>- Long-term security of supply</li> <li>- Animal-free production</li> </ul> <p>For more information <a href="#">see here</a>.</p> <p>Our RabMAb<sup>®</sup> technology is a patented hybridoma-based technology for making rabbit monoclonal antibodies. For details on our patents, please refer to <a href="#">RabMAb<sup>®</sup> patents</a>.</p> <p>Mouse, Rat: We have preliminary internal testing data to indicate this antibody may not react with these species. Please contact us for more information.</p>

#### Properties

Form	Liquid
Storage instructions	Shipped at 4°C. Upon delivery aliquot and store at -20°C. Avoid freeze / thaw cycles.
Storage buffer	pH: 7.2 Preservative: 0.01% Sodium azide Constituents: 9% PBS, 40% Glycerol (glycerin, glycerine), 0.05% BSA, 50% Tissue culture supernatant
Purity	Protein A purified
Clonality	Monoclonal

Clone number                      EPR8721

Isotype                                IgG

## Applications

**The Abpromise guarantee**                      Our **Abpromise guarantee** covers the use of ab137122 in the following tested applications. The application notes include recommended starting dilutions; optimal dilutions/concentrations should be determined by the end user.

Application	Abreviews	Notes
WB		1/1000 - 1/10000. Detects a band of approximately 84 kDa (predicted molecular weight: 85 kDa).
IHC-P		1/50 - 1/100. Perform heat mediated antigen retrieval before commencing with IHC staining protocol.

**Application notes**                                Is unsuitable for Flow Cyt or ICC/IF.

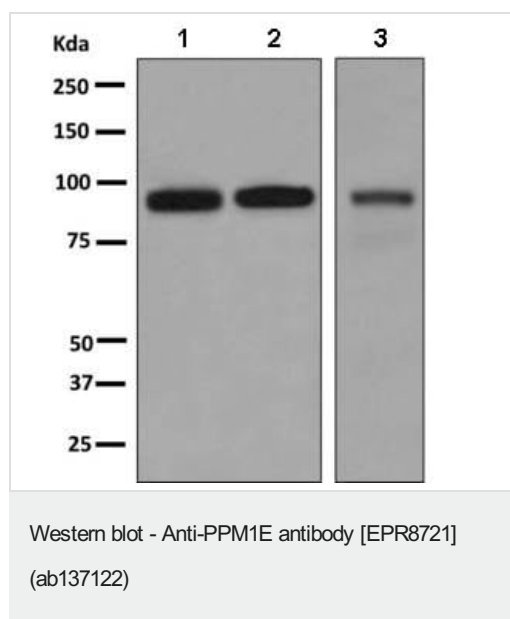
## Target

**Function**    Protein phosphatase that inactivates multifunctional CaM kinases such as CAMK4 and CAMK2 (By similarity). Dephosphorylates and inactivates PAK. May play a role in the inhibition of actin fiber stress breakdown and in morphological changes driven by TNK2/CDC42.

**Sequence similarities**                              Belongs to the PP2C family.  
Contains 1 PP2C-like domain.

**Cellular localization**                              Nucleus. Cytoplasm. A truncated form, major form, with the C-terminal part missing, is mostly found in the cytoplasm and a little in the nucleus. The full length, minor form, is found in the nucleus.

## Images



**All lanes** : Anti-PPM1E antibody [EPR8721] (ab137122) at 1/1000 dilution

**Lane 1** : SH-SY5Y lysate

**Lane 2** : Human hypothalamus lysate

**Lane 3** : Human hippocampus lysate

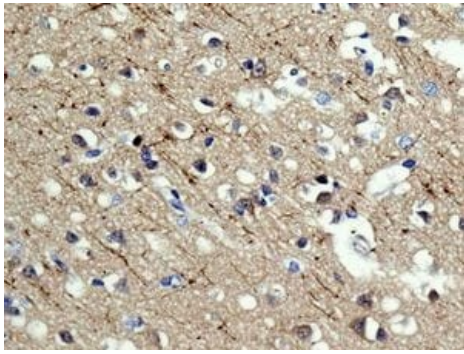
Lysates/proteins at 10 µg per lane.

### Secondary

**All lanes** : HRP labelled goat anti-rabbit at 1/2000 dilution

**Predicted band size:** 85 kDa

**Observed band size:** 84 kDa

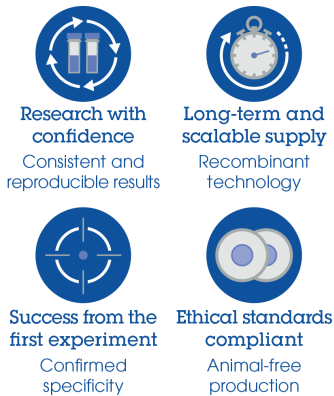


Immunohistochemistry (Formalin/PFA-fixed paraffin-embedded sections) - Anti-PPM1E antibody [EPR8721] (ab137122)

Immunohistochemical analysis of paraffin embedded Human brain tissue labelling PPM1E with ab137122 antibody at a dilution of 1/50.

Perform heat mediated antigen retrieval before commencing with IHC staining protocol.

#### Why choose a recombinant antibody?



Anti-PPM1E antibody [EPR8721] (ab137122)

**Please note:** All products are "FOR RESEARCH USE ONLY. NOT FOR USE IN DIAGNOSTIC PROCEDURES"

#### Our Abpromise to you: Quality guaranteed and expert technical support

- Replacement or refund for products not performing as stated on the datasheet
- Valid for 12 months from date of delivery
- Response to your inquiry within 24 hours
- We provide support in Chinese, English, French, German, Japanese and Spanish
- Extensive multi-media technical resources to help you
- We investigate all quality concerns to ensure our products perform to the highest standards

If the product does not perform as described on this datasheet, we will offer a refund or replacement. For full details of the Abpromise, please visit <https://www.abcam.com/abpromise> or contact our technical team.

#### Terms and conditions

- Guarantee only valid for products bought direct from Abcam or one of our authorized distributors