

## Product datasheet

### Anti-PPM1E antibody [EPR8722] ab137023

Recombinant **RabMAb**

3 Images

#### Overview

<b>Product name</b>	Anti-PPM1E antibody [EPR8722]
<b>Description</b>	Rabbit monoclonal [EPR8722] to PPM1E
<b>Host species</b>	Rabbit
<b>Tested applications</b>	<b>Suitable for:</b> Flow Cyt (Intra), WB <b>Unsuitable for:</b> IHC-P
<b>Species reactivity</b>	<b>Reacts with:</b> Human
<b>Immunogen</b>	Synthetic peptide within Human PPM1E aa 500-600. The exact sequence is proprietary.
<b>Positive control</b>	SH-SY5Y, Human fetal brain and Human cerebellum lysates; SH-SY5Y cells
<b>General notes</b>	<p>This product is a recombinant monoclonal antibody, which offers several advantages including:</p> <ul style="list-style-type: none"> <li>- High batch-to-batch consistency and reproducibility</li> <li>- Improved sensitivity and specificity</li> <li>- Long-term security of supply</li> <li>- Animal-free production</li> </ul> <p>For more information <a href="#">see here</a>.</p> <p>Our RabMAb<sup>®</sup> technology is a patented hybridoma-based technology for making rabbit monoclonal antibodies. For details on our patents, please refer to <a href="#">RabMAb<sup>®</sup> patents</a>.</p> <p>Mouse, Rat: We have preliminary internal testing data to indicate this antibody may not react with these species. Please contact us for more information.</p>

#### Properties

<b>Form</b>	Liquid
<b>Storage instructions</b>	Shipped at 4°C. Store at -20°C.
<b>Storage buffer</b>	<p>pH: 7.2</p> <p>Preservative: 0.01% Sodium azide</p> <p>Constituents: 9% PBS, 40% Glycerol (glycerin, glycerine), 0.05% BSA, 50% Tissue culture supernatant</p>
<b>Purity</b>	Tissue culture supernatant
<b>Clonality</b>	Monoclonal

Clone number                      EPR8722

Isotype                                IgG

## Applications

**The Abpromise guarantee**                      Our **Abpromise guarantee** covers the use of ab137023 in the following tested applications.

The application notes include recommended starting dilutions; optimal dilutions/concentrations should be determined by the end user.

Application	Abreviews	Notes
Flow Cyt (Intra)		1/100 - 1/500. <b>ab172730</b> - Rabbit monoclonal IgG, is suitable for use as an isotype control with this antibody.
WB		1/1000 - 1/10000. Predicted molecular weight: 85 kDa.

**Application notes**                                Is unsuitable for IHC-P.

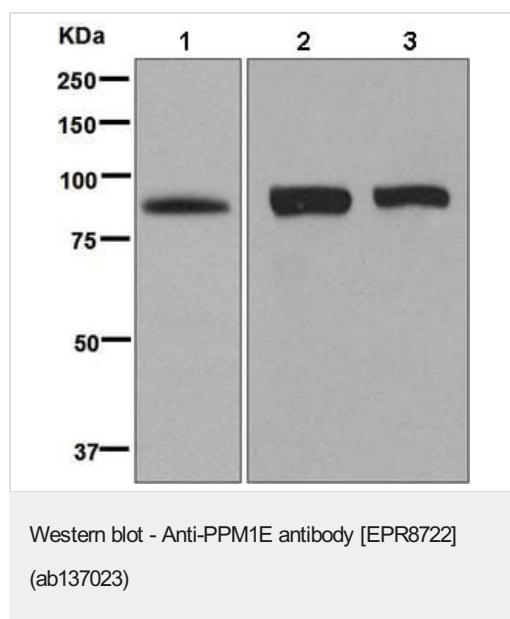
## Target

**Function**                                              Protein phosphatase that inactivates multifunctional CaM kinases such as CAMK4 and CAMK2 (By similarity). Dephosphorylates and inactivates PAK. May play a role in the inhibition of actin fiber stress breakdown and in morphological changes driven by TNK2/CDC42.

**Sequence similarities**                              Belongs to the PP2C family.  
Contains 1 PP2C-like domain.

**Cellular localization**                              Nucleus. Cytoplasm. A truncated form, major form, with the C-terminal part missing, is mostly found in the cytoplasm and a little in the nucleus. The full length, minor form, is found in the nucleus.

## Images



**All lanes** : Anti-PPM1E antibody [EPR8722] (ab137023) at 1/1000 dilution

**Lane 1** : SH-SY5Y lysate

**Lane 2** : Human fetal brain lysate

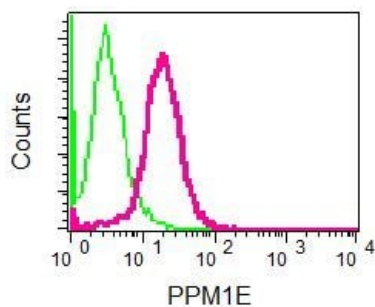
**Lane 3** : Human cerebellum lysate

Lysates/proteins at 10 µg per lane.

### Secondary

**All lanes** : HRP labelled goat anti-rabbit at 1/2000 dilution

**Predicted band size:** 85 kDa



Intracellular flow cytometric analysis of permeabilized SH-SY5Y cells labelling PPM1E with ab137023 at 1/100 dilution (red). Rabbit IgG negative control is green.

Flow Cytometry (Intracellular) - Anti-PPM1E  
antibody [EPR8722] (ab137023)

#### Why choose a recombinant antibody?



**Research with confidence**  
Consistent and reproducible results



**Long-term and scalable supply**  
Recombinant technology



**Success from the first experiment**  
Confirmed specificity



**Ethical standards compliant**  
Animal-free production

Anti-PPM1E antibody [EPR8722] (ab137023)

**Please note:** All products are "FOR RESEARCH USE ONLY. NOT FOR USE IN DIAGNOSTIC PROCEDURES"

#### Our Abpromise to you: Quality guaranteed and expert technical support

- Replacement or refund for products not performing as stated on the datasheet
- Valid for 12 months from date of delivery
- Response to your inquiry within 24 hours
- We provide support in Chinese, English, French, German, Japanese and Spanish
- Extensive multi-media technical resources to help you
- We investigate all quality concerns to ensure our products perform to the highest standards

If the product does not perform as described on this datasheet, we will offer a refund or replacement. For full details of the Abpromise, please visit <https://www.abcam.com/abpromise> or contact our technical team.

#### Terms and conditions

- Guarantee only valid for products bought direct from Abcam or one of our authorized distributors