


Product datasheet

Anti-PPM1K antibody ab135286

★★★★★ [1 Abreviews](#) [6 References](#) [2 Images](#)

Overview

Product name	Anti-PPM1K antibody
Description	Rabbit polyclonal to PPM1K
Host species	Rabbit
Specificity	From Jan 2024, QC testing of replenishment batches of this polyclonal changed. All tested and expected application and reactive species combinations are still covered by our Abcam product promise. However, we no longer test all applications. For more information on a specific batch, please contact our Scientific Support who will be happy to help.
Tested applications	Suitable for: IHC-P, WB
Species reactivity	Reacts with: Mouse, Human Predicted to work with: Rat, Horse, Dog, Chimpanzee, Macaque monkey, Gorilla, Chinese hamster, Orangutan 
Immunogen	Synthetic peptide corresponding to Human PPM1K aa 50-150 conjugated to keyhole limpet haemocyanin. (Peptide available as ab166587)
Positive control	This antibody gave a positive signal in the following tissue lysates: Human Heart; Mouse Heart; Human Skeletal Muscle; Mouse Skeletal Muscle. IHC-P: Human heart muscle FFPE tissue sections.
General notes	<p>The Life Science industry has been in the grips of a reproducibility crisis for a number of years. Abcam is leading the way in addressing this with our range of recombinant monoclonal antibodies and knockout edited cell lines for gold-standard validation. Please check that this product meets your needs before purchasing.</p> <p>If you have any questions, special requirements or concerns, please send us an inquiry and/or contact our Support team ahead of purchase. Recommended alternatives for this product can be found below, along with publications, customer reviews and Q&As</p>

Properties

Form	Liquid
Storage instructions	Shipped at 4°C. Store at +4°C short term (1-2 weeks). Upon delivery aliquot. Store at -20°C or -80°C. Avoid freeze / thaw cycle.
Storage buffer	pH: 7.40

Preservative: 0.02% Sodium azide
Constituent: PBS

Batches of this product that have a concentration < 1mg/ml may have BSA added as a stabilising agent. If you would like information about the formulation of a specific lot, please contact our scientific support team who will be happy to help.

Purity	Immunogen affinity purified
Clonality	Polyclonal
Isotype	IgG

Applications

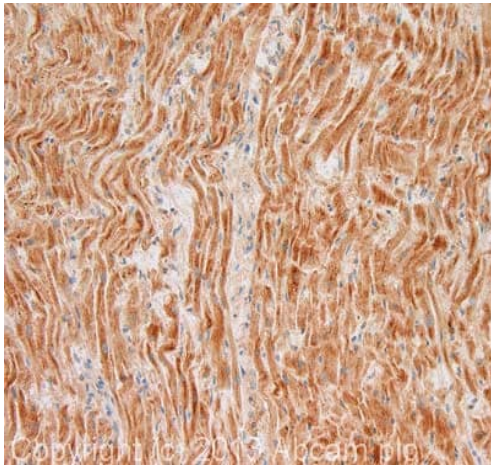
The Abpromise guarantee Our **Abpromise guarantee** covers the use of ab135286 in the following tested applications. The application notes include recommended starting dilutions; optimal dilutions/concentrations should be determined by the end user.

Application	Abreviews	Notes
IHC-P		Use a concentration of 5 µg/ml. Perform heat mediated antigen retrieval with citrate buffer pH 6 before commencing with IHC staining protocol.
WB	★★★★★ (1)	Use a concentration of 1 µg/ml. Detects a band of approximately 37 kDa (predicted molecular weight: 40 kDa).

Target

Function	Regulates the mitochondrial permeability transition pore and is essential for cellular survival and development.
Sequence similarities	Belongs to the PP2C family. Contains 1 PP2C-like domain.
Cellular localization	Mitochondrion matrix.

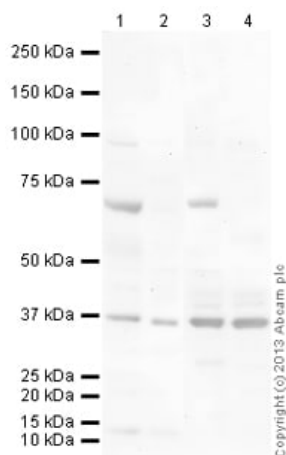
Images



Immunohistochemistry (Formalin/PFA-fixed paraffin-embedded sections) - Anti-PPM1K antibody (ab135286)

IHC image of PPM1K staining in human heart formalin fixed paraffin embedded tissue section, performed on a Leica Bond system using the standard protocol F. The section was pre-treated using heat mediated antigen retrieval with sodium citrate buffer (pH6, epitope retrieval solution 1) for 20 mins. The section was then incubated with ab135286, 5µg/ml, for 15 mins at room temperature and detected using an HRP conjugated compact polymer system. DAB was used as the chromogen. The section was then counterstained with haematoxylin and mounted with DPX.

For other IHC staining systems (automated and non-automated) customers should optimize variable parameters such as antigen retrieval conditions, primary antibody concentration and antibody incubation times.



Western blot - Anti-PPM1K antibody (ab135286)

All lanes : Anti-PPM1K antibody (ab135286) at 1 µg/ml

Lane 1 : Human heart tissue lysate - total protein ([ab29431](#))

Lane 2 : Heart (Mouse) Tissue Lysate

Lane 3 : Human skeletal muscle tissue lysate - total protein ([ab29330](#))

Lane 4 : Skeletal Muscle (Mouse) Tissue Lysate

Lysates/proteins at 10 µg per lane.

Secondary

All lanes : Goat Anti-Rabbit IgG H&L (HRP) ([ab97051](#)) at 1/10000 dilution

Developed using the ECL technique.

Performed under reducing conditions.

Predicted band size: 40 kDa

Observed band size: 37 kDa

Additional bands at: 70 kDa, 99 kDa. We are unsure as to the identity of these extra bands.

Exposure time: 90 seconds

The band observed at 37 kDa could potentially be a cleaved form of PPM1K due to the presence of a 29 amino acid transit peptide.

This blot was produced using a 4-12% Bis-tris gel under the MOPS buffer system. The gel was run at 200V for 50 minutes before being transferred onto a Nitrocellulose membrane at 30V for 70 minutes. The membrane was then blocked for an hour using 5% Bovine Serum Albumin before being incubated with ab135286 overnight at 4°C. Antibody binding was detected using an anti-rabbit antibody conjugated to HRP, and visualised using ECL development solution.

Please note: All products are "FOR RESEARCH USE ONLY. NOT FOR USE IN DIAGNOSTIC PROCEDURES"

Our Abpromise to you: Quality guaranteed and expert technical support

- Replacement or refund for products not performing as stated on the datasheet
- Valid for 12 months from date of delivery
- Response to your inquiry within 24 hours
- We provide support in Chinese, English, French, German, Japanese and Spanish
- Extensive multi-media technical resources to help you
- We investigate all quality concerns to ensure our products perform to the highest standards

If the product does not perform as described on this datasheet, we will offer a refund or replacement. For full details of the Abpromise, please visit <https://www.abcam.com/abpromise> or contact our technical team.

Terms and conditions

- Guarantee only valid for products bought direct from Abcam or one of our authorized distributors