


Product datasheet

Anti-PPP1CB antibody ab154600

★★★★★ [1 Abreviews](#) [1 References](#) [4 Images](#)

Overview

Product name	Anti-PPP1CB antibody
Description	Rabbit polyclonal to PPP1CB
Host species	Rabbit
Tested applications	Suitable for: WB, IHC-P, ICC/IF
Species reactivity	Reacts with: Mouse, Human Predicted to work with: Rat, Chicken, Cow, Dog, Pig, Xenopus laevis, Zebrafish, Xenopus tropicalis 
Immunogen	Recombinant fragment corresponding to Human PPP1CB aa 1-274.
Positive control	293T, A431, H1299, HeLaS3, HepG2, Molt-4 and Raji whole cell lysate. Mouse brain whole cell lysate. HeLa cells.
General notes	Keep as concentrated solution. The Life Science industry has been in the grips of a reproducibility crisis for a number of years. Abcam is leading the way in addressing this with our range of recombinant monoclonal antibodies and knockout edited cell lines for gold-standard validation. Please check that this product meets your needs before purchasing. If you have any questions, special requirements or concerns, please send us an inquiry and/or contact our Support team ahead of purchase. Recommended alternatives for this product can be found below, along with publications, customer reviews and Q&As

Properties

Form	Liquid
Storage instructions	Shipped at 4°C. Upon delivery aliquot. Store at -20°C or -80°C. Avoid freeze / thaw cycle.
Storage buffer	pH: 7.00 Preservative: 0.025% Proclin 300 Constituents: 79% PBS, 20% Glycerol (glycerin, glycerine)
Purity	Immunogen affinity purified
Clonality	Polyclonal
Isotype	IgG

Applications

The Abpromise guarantee Our **Abpromise guarantee** covers the use of ab154600 in the following tested applications. The application notes include recommended starting dilutions; optimal dilutions/concentrations should be determined by the end user.

Application	Abreviews	Notes
WB		1/500 - 1/3000. Predicted molecular weight: 37 kDa.
IHC-P		1/100 - 1/1000. Perform heat mediated antigen retrieval before commencing with IHC staining protocol using 10mM Citrate buffer (pH6.0) or Tris-EDTA buffer (pH8.0).
ICC/IF	★★★★★ (1)	1/100 - 1/1000.

Target

Function

Protein phosphatase that associates with over 200 regulatory proteins to form highly specific holoenzymes which dephosphorylate hundreds of biological targets. Protein phosphatase (PP1) is essential for cell division, it participates in the regulation of glycogen metabolism, muscle contractility and protein synthesis. Involved in regulation of ionic conductances and long-term synaptic plasticity. Component of the PTW/PP1 phosphatase complex, which plays a role in the control of chromatin structure and cell cycle progression during the transition from mitosis into interphase. In balance with CSNK1D and CSNK1E, determines the circadian period length, through the regulation of the speed and rhythmicity of PER1 and PER2 phosphorylation. May dephosphorylate CSNK1D and CSNK1E. Dephosphorylates the 'Ser-418' residue of FOXP3 in regulatory T-cells (Treg) from patients with rheumatoid arthritis, thereby inactivating FOXP3 and rendering Treg cells functionally defective (PubMed:23396208).

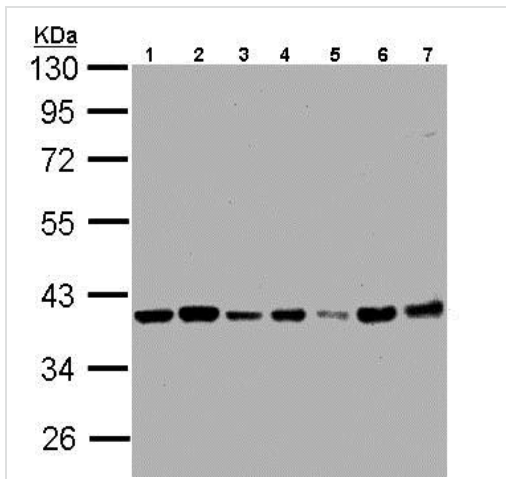
Sequence similarities

Belongs to the PPP phosphatase family. PP-1 subfamily.

Cellular localization

Cytoplasm. Nucleus. Nucleus, nucleoplasm. Nucleus, nucleolus. Highly mobile in cells and can be relocalized through interaction with targeting subunits. In the presence of PPP1R8 relocates from the nucleus to nuclear speckles.

Images



Western blot - Anti-PPP1CB antibody (ab154600)

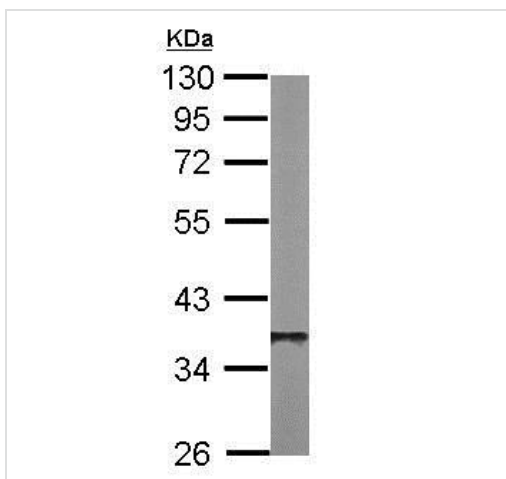
All lanes : Anti-PPP1CB antibody (ab154600) at 1/1000 dilution

- Lane 1 :** 293T whole cell lysate
- Lane 2 :** A431 whole cell lysate
- Lane 3 :** H1299 whole cell lysate
- Lane 4 :** HeLa S3 whole cell lysate
- Lane 5 :** Hep G2 whole cell lysate
- Lane 6 :** MOLT4 whole cell lysate
- Lane 7 :** Raji whole cell lysate

Lysates/proteins at 30 µg per lane.

Predicted band size: 37 kDa

7.5% SDS PAGE

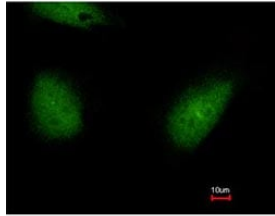


Western blot - Anti-PPP1CB antibody (ab154600)

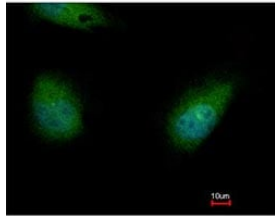
Anti-PPP1CB antibody (ab154600) at 1/1000 dilution + Mouse brain whole cell lysate at 50 µg

Predicted band size: 37 kDa

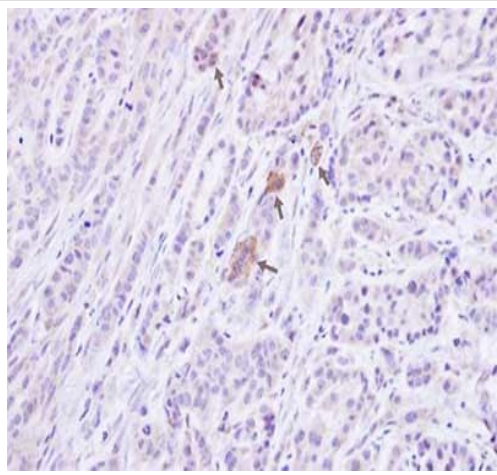
10% SDS PAGE



Immunofluorescent analysis of paraformaldehyde-fixed HeLa cells labeling PPP1CB with ab154600 at 1/500 dilution. Lower panel is co-stained with Hoechst 33342.



Immunocytochemistry/ Immunofluorescence - Anti-PPP1CB antibody (ab154600)



Immunohistochemical analysis of paraffin-embedded A549 xenograft labelling PPP1CB with ab154600 at 1/100 dilution.

Immunohistochemistry (Formalin/PFA-fixed paraffin-embedded sections) - Anti-PPP1CB antibody (ab154600)

Please note: All products are "FOR RESEARCH USE ONLY. NOT FOR USE IN DIAGNOSTIC PROCEDURES"

Our Abpromise to you: Quality guaranteed and expert technical support

- Replacement or refund for products not performing as stated on the datasheet
- Valid for 12 months from date of delivery
- Response to your inquiry within 24 hours
- We provide support in Chinese, English, French, German, Japanese and Spanish
- Extensive multi-media technical resources to help you
- We investigate all quality concerns to ensure our products perform to the highest standards

If the product does not perform as described on this datasheet, we will offer a refund or replacement. For full details of the Abpromise, please visit <https://www.abcam.com/abpromise> or contact our technical team.

Terms and conditions

- Guarantee only valid for products bought direct from Abcam or one of our authorized distributors