


Product datasheet

Anti-PPP1R11 antibody [EPR11965] α b171960

Recombinant RabMAb

★★★★★ 1 Abreviews 1 References 4 Images

Overview

Product name	Anti-PPP1R11 antibody [EPR11965]
Description	Rabbit monoclonal [EPR11965] to PPP1R11
Host species	Rabbit
Tested applications	Suitable for: Flow Cyt (Intra), WB, IP Unsuitable for: ICC/IF or IHC-P
Species reactivity	Reacts with: Human Predicted to work with: Mouse, Rat 
Immunogen	Synthetic peptide. This information is proprietary to Abcam and/or its suppliers.
Positive control	Human testis, HeLa, fetal brain, NIH: OVCAR-3 and MDA-MB-435 lysates. Permeabilized HeLa cells.
General notes	<p>This product is a recombinant monoclonal antibody, which offers several advantages including:</p> <ul style="list-style-type: none"> - High batch-to-batch consistency and reproducibility - Improved sensitivity and specificity - Long-term security of supply - Animal-free production <p>For more information see here.</p> <p>Our RabMAb[®] technology is a patented hybridoma-based technology for making rabbit monoclonal antibodies. For details on our patents, please refer to RabMAb[®] patents.</p>

Properties

Form	Liquid
Storage instructions	Shipped at 4°C. Store at +4°C short term (1-2 weeks). Upon delivery aliquot. Store at -20°C long term. Avoid freeze / thaw cycle.
Storage buffer	pH: 7.20 Preservative: 0.01% Sodium azide Constituents: 9% PBS, 40% Glycerol (glycerin, glycerine), 0.05% BSA, 50% Tissue culture supernatant
Purity	Tissue culture supernatant
Clonality	Monoclonal

Clone number EPR11965

Isotype IgG

Applications

The Abpromise guarantee Our **Abpromise guarantee** covers the use of ab171960 in the following tested applications.

The application notes include recommended starting dilutions; optimal dilutions/concentrations should be determined by the end user.

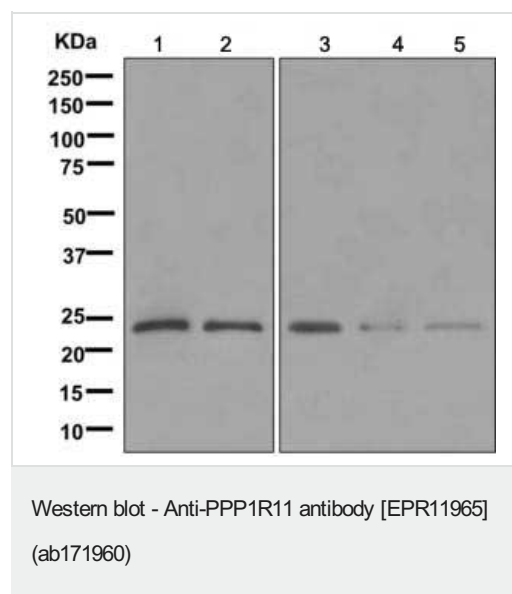
Application	Abreviews	Notes
Flow Cyt (Intra)		1/10 - 1/100. ab172730 - Rabbit monoclonal IgG, is suitable for use as an isotype control with this antibody.
WB	★★★★★ (1)	1/1000 - 1/10000. Predicted molecular weight: 14 kDa.
IP		1/10 - 1/100.

Application notes Is unsuitable for ICC/IF or IHC-P.

Target

Cellular localization Cytoplasmic

Images



All lanes : Anti-PPP1R11 antibody [EPR11965] (ab171960) at 1/1000 dilution

Lane 1 : Human testis lysate

Lane 2 : HeLa cell lysate

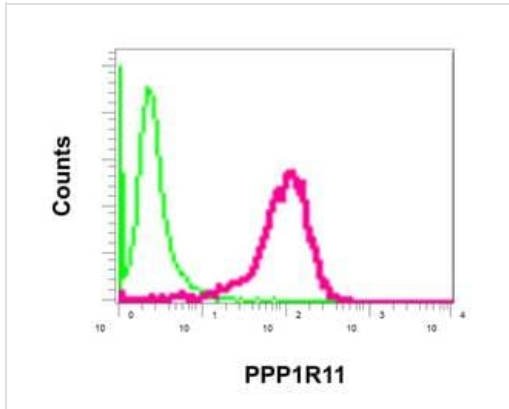
Lane 3 : Fetal brain tissue lysate

Lane 4 : NIH:OVCAR-3 cell lysate

Lane 5 : MDA-MB-435 lysate

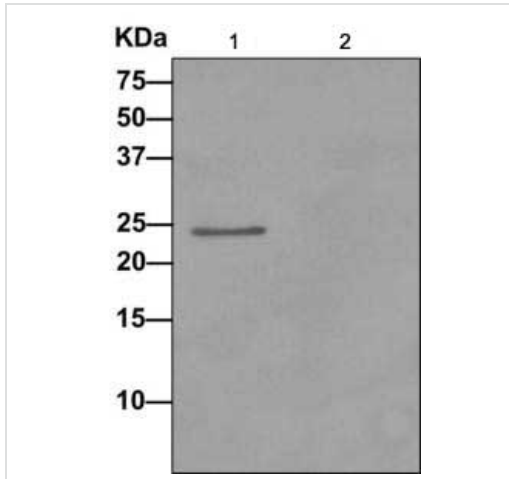
Lysates/proteins at 10 µg per lane.

Predicted band size: 14 kDa



Intracellular flow cytometric analysis of permeabilized HeLa cells labeling PPP1R11 with ab171960 at 1/10 dilution (red) or a Rabbit IgG (negative) (green).

Flow Cytometry (Intracellular) - Anti-PPP1R11 antibody [EPR11965] (ab171960)



Western blot analysis on immunoprecipitation pellet from Human testis lysate (1) labeling PPP1R11 with ab171960 at 1/10 dilution or 1X PBS (2) negative control. HRP-conjugated anti-Rabbit IgG preferentially detecting the non-reduced form of Rabbit IgG.

Immunoprecipitation - Anti-PPP1R11 antibody [EPR11965] (ab171960)

Why choose a recombinant antibody?



Research with confidence
Consistent and reproducible results



Long-term and scalable supply
Recombinant technology



Success from the first experiment
Confirmed specificity



Ethical standards compliant
Animal-free production

Anti-PPP1R11 antibody [EPR11965] (ab171960)

Please note: All products are "FOR RESEARCH USE ONLY. NOT FOR USE IN DIAGNOSTIC PROCEDURES"

Our Abpromise to you: Quality guaranteed and expert technical support

- Replacement or refund for products not performing as stated on the datasheet
- Valid for 12 months from date of delivery
- Response to your inquiry within 24 hours
- We provide support in Chinese, English, French, German, Japanese and Spanish
- Extensive multi-media technical resources to help you
- We investigate all quality concerns to ensure our products perform to the highest standards

If the product does not perform as described on this datasheet, we will offer a refund or replacement. For full details of the Abpromise, please visit <https://www.abcam.com/abpromise> or contact our technical team.

Terms and conditions

- Guarantee only valid for products bought direct from Abcam or one of our authorized distributors