


Product datasheet

Anti-PPP2R5E antibody [EPR17147] - C-terminal ab198500

KO VALIDATED Recombinant RabMAb

9 Images

Overview

Product name	Anti-PPP2R5E antibody [EPR17147] - C-terminal
Description	Rabbit monoclonal [EPR17147] to PPP2R5E - C-terminal
Host species	Rabbit
Tested applications	Suitable for: WB, IP, ICC/IF, IHC-P, Flow Cyt (Intra)
Species reactivity	Reacts with: Human Predicted to work with: Mouse, Rat 
Immunogen	Synthetic peptide. This information is proprietary to Abcam and/or its suppliers.
Positive control	WB: HeLa, HEK-293T and Daudi cell lysates; Human skeletal muscle lysates. IHC: Human cervix carcinoma and bladder transitional cell carcinoma tissues. ICC/IF: HeLa cells. Flow Cyt (intra): HeLa cell lysate. IP: HeLa cell lysate.
General notes	<p>This product is a recombinant monoclonal antibody, which offers several advantages including:</p> <ul style="list-style-type: none"> - High batch-to-batch consistency and reproducibility - Improved sensitivity and specificity - Long-term security of supply - Animal-free production <p>For more information see here.</p> <p>Our RabMAb[®] technology is a patented hybridoma-based technology for making rabbit monoclonal antibodies. For details on our patents, please refer to RabMAb[®] patents.</p>

Properties

Form	Liquid
Storage instructions	Shipped at 4°C. Store at +4°C short term (1-2 weeks). Upon delivery aliquot. Store at -20°C long term. Avoid freeze / thaw cycle.
Storage buffer	pH: 7.2 Preservative: 0.01% Sodium azide Constituents: 40% Glycerol (glycerin, glycerine), 59% PBS, 0.05% BSA
Purity	Protein A purified

Clonality	Monoclonal
Clone number	EPR17147
Isotype	IgG

Applications

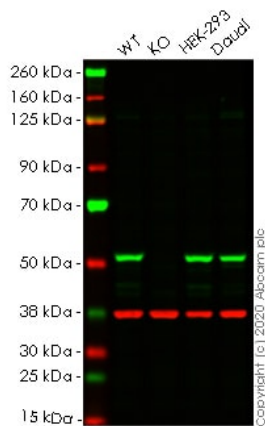
The Abpromise guarantee Our **Abpromise guarantee** covers the use of ab198500 in the following tested applications. The application notes include recommended starting dilutions; optimal dilutions/concentrations should be determined by the end user.

Application	Abreviews	Notes
WB		1/5000. Detects a band of approximately 55 kDa (predicted molecular weight: 55 kDa).
IP		1/75.
ICC/IF		1/500.
IHC-P		1/500. Perform heat mediated antigen retrieval with Tris/EDTA buffer pH 9.0 before commencing with IHC staining protocol.
Flow Cyt (Intra)		1/2500.

Target

Function	The B regulatory subunit might modulate substrate selectivity and catalytic activity, and also might direct the localization of the catalytic enzyme to a particular subcellular compartment.
Sequence similarities	Belongs to the phosphatase 2A regulatory subunit B56 family.
Post-translational modifications	Phosphorylated on serine residues.
Cellular localization	Cytoplasm.

Images



Western blot - Anti-PPP2R5E antibody [EPR17147]
- C-terminal (ab198500)

All lanes : Anti-PPP2R5E antibody [EPR17147] - C-terminal (ab198500) at 1/5000 dilution

Lane 1 : Wild-type HeLa cell lysate

Lane 2 : PPP2R5E knockout HeLa cell lysate

Lane 3 : HEK-293T cell lysate

Lane 4 : Daudi cell lysate

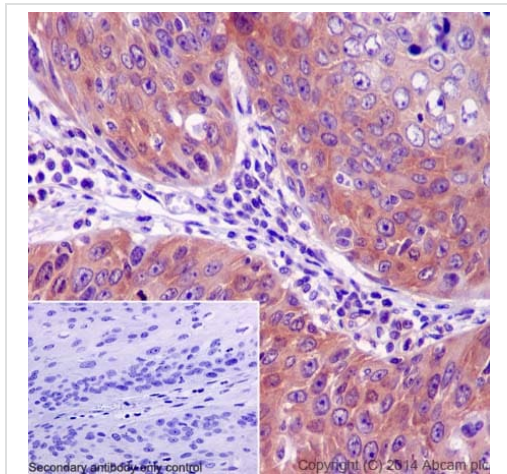
Lysates/proteins at 20 µg per lane.

Performed under reducing conditions.

Predicted band size: 55 kDa

Lanes 1-4: Merged signal (red and green). Green - ab198500 observed at 55 kDa. Red - loading control **ab8245** observed at 37 kDa.

ab198500 Recombinant Anti-PPP2R5E antibody [EPR17147] - C-terminal was shown to specifically react with PPP2R5E in wild-type HeLa cells. Loss of signal was observed when knockout cell line **ab265637** (knockout cell lysate **ab258135**) was used. Wild-type and PPP2R5E knockout samples were subjected to SDS-PAGE. ab198500 and Anti-GAPDH antibody [6C5] - Loading Control (**ab8245**) were incubated overnight at 4°C at 1 in 5000 dilution and 1 in 20000 dilution respectively. Blots were developed with Goat anti-Rabbit IgG H&L (IRDye® 800CW) preadsorbed (**ab216773**) and Goat anti-Mouse IgG H&L (IRDye® 680RD) preadsorbed (**ab216776**) secondary antibodies at 1 in 20000 dilution for 1 hour at room temperature before imaging.

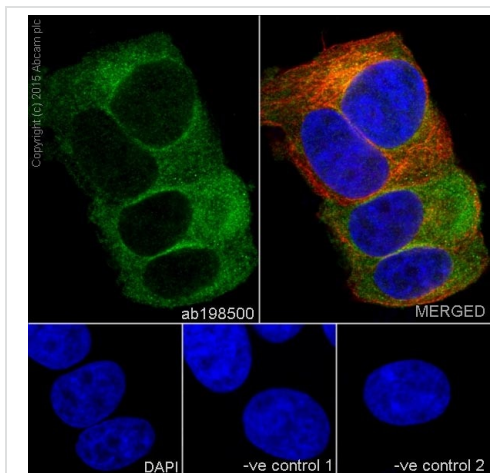


Immunohistochemistry (Formalin/PFA-fixed paraffin-embedded sections) - Anti-PPP2R5E antibody [EPR17147] - C-terminal (ab198500)

Immunohistochemical analysis of paraffin-embedded Human cervix carcinoma tissue labeling PPP2R5E with ab198500 at 1/500 dilution followed by Goat Anti-Rabbit IgG H&L (HRP) ([ab97051](#)) at 1/500 dilution. Cytoplasm staining on Human cervix carcinoma tissue is observed. Counter-stained with Hematoxylin.

Negative control: Using PBS instead of primary antibody.

Perform heat mediated antigen retrieval with Tris/EDTA buffer pH 9.0 before commencing with IHC staining protocol.

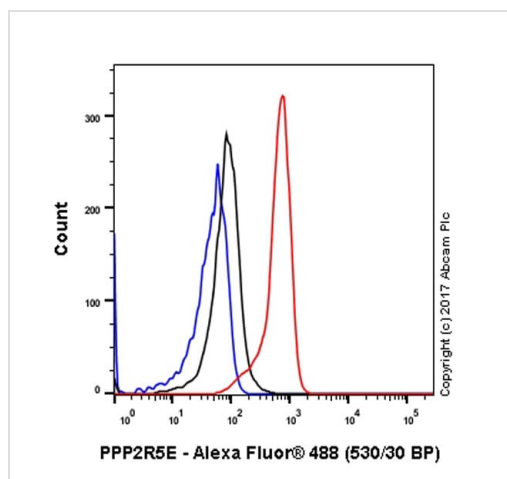


Immunocytochemistry/ Immunofluorescence - Anti-PPP2R5E antibody [EPR17147] - C-terminal (ab198500)

Immunofluorescent analysis of 4% paraformaldehyde-fixed, 0.1% Triton X-100 permeabilized MCF-7 (Human breast carcinoma) cells labeling PPP2R5E with ab198500 at 1/500 dilution, followed by Goat anti-rabbit IgG (Alexa Fluor® 488) ([ab150077](#)) secondary antibody at 1/500 dilution (green). Cytoplasm staining on MCF7 cell line is observed. The nuclear counter stain is DAPI (blue). Tubulin is detected with [ab7291](#) (anti-Tubulin mouse mAb) at 1/1000 dilution and [ab150120](#) (AlexaFluor®594 Goat anti-Mouse secondary) at 1/500 dilution (red).

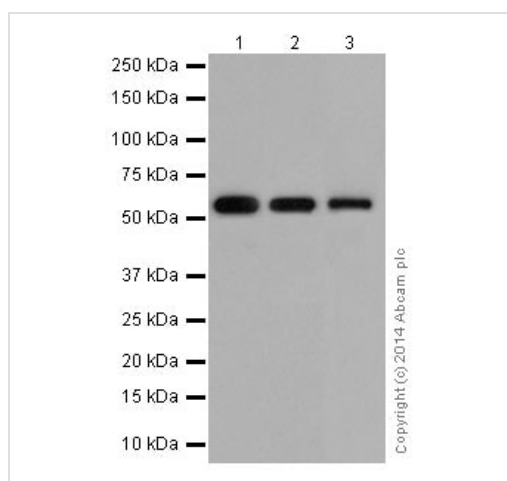
The negative controls are as follows;

1. ab198500 at 1/500 dilution followed by [ab150120](#) (AlexaFluor®594 Goat anti-Mouse secondary) at 1/500 dilution.
2. [ab7291](#) (anti-Tubulin mouse mAb) at 1/1000 dilution followed by [ab150077](#) (Alexa Fluor®488 Goat Anti-Rabbit IgG H&L) at 1/500 dilution.



Flow Cytometry (Intracellular) - Anti-PPP2R5E antibody [EPR17147] - C-terminal (ab198500)

Intracellular Flow Cytometry analysis of HeLa (Human cervix adenocarcinoma epithelial cell) cells labeling PPP2R5E (red) with purified ab198500 at a 1/2500 dilution (1ug/mL). Cells were fixed with 4% paraformaldehyde and permeabilized with 90% methanol. A goat anti rabbit IgG (Alexa Fluor® 488) (**ab150077**) was used as the secondary antibody at a 1/2000 dilution. Black - Rabbit monoclonal IgG (Black) (**ab172730**). Blue (unlabeled control) - Cell without incubation with primary antibody and secondary antibody (Blue).



Western blot - Anti-PPP2R5E antibody [EPR17147] - C-terminal (ab198500)

All lanes : Anti-PPP2R5E antibody [EPR17147] - C-terminal (ab198500) at 1/5000 dilution

Lane 1 : HeLa cell lysate at 10 µg

Lane 2 : 293 cell lysate at 10 µg

Lane 3 : Human skeletal muscle lysate at 20 µg

Secondary

All lanes : Goat Anti-Rabbit IgG, (H+L), Peroxidase conjugate at 1/1000 dilution

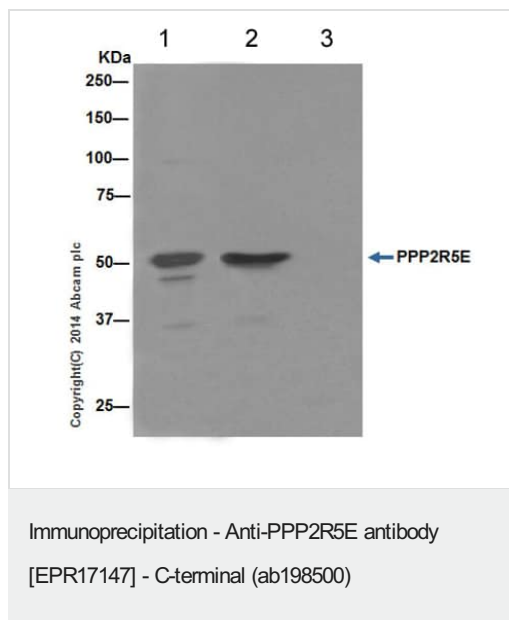
Developed using the ECL technique.

Predicted band size: 55 kDa

Observed band size: 55 kDa

Exposure time: 3 minutes

Blocking/Dilution buffer: 5% NFDM/TBST.



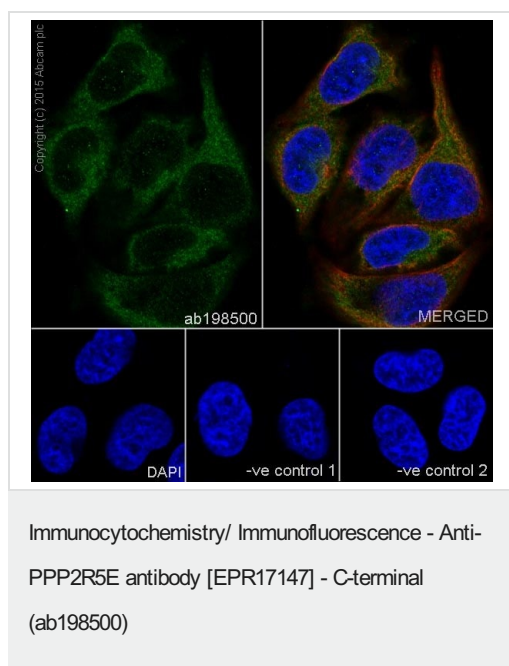
PPP2R5E was immunoprecipitated from 1mg of HeLa (Human cervix adenocarcinoma) whole cell extract with ab198500 at 1/175 dilution. Western blot was performed from the immunoprecipitate using ab198500 at 1/1000 dilution. Anti-Rabbit IgG (HRP), specific to the non-reduced form of IgG, was used as secondary antibody at 1/1500 dilution.

Lane 1: HeLa whole cell extract 10µg (Input).

Lane 2: HeLa whole cell extract

Lane 3: Rabbit monoclonal IgG ([ab172730](#)) instead of ab198500 in HeLa whole cell extract.

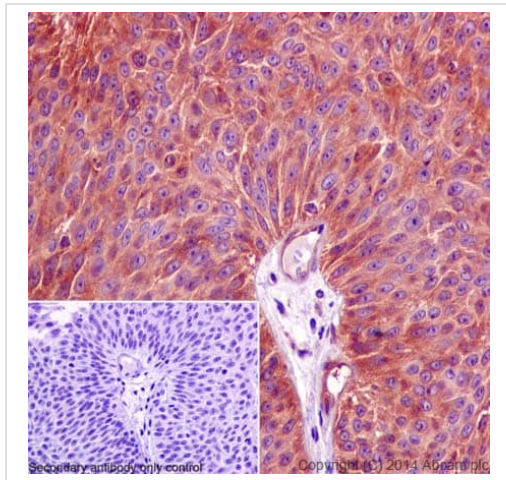
Blocking and dilution buffer and concentration: 5% NFDM/TBST.



Immunofluorescent analysis of 4% paraformaldehyde-fixed, 0.1% Triton X-100 permeabilized HeLa (Human cervix adenocarcinoma) cells labeling PPP2R5E with ab198500 at 1/500 dilution, followed by Goat anti-rabbit IgG (Alexa Fluor® 488) ([ab150077](#)) secondary antibody at 1/500 dilution (green). Cytoplasm staining on HeLa cell line is observed. The nuclear counter stain is DAPI (blue). Tubulin is detected with [ab7291](#) (anti-Tubulin mouse mAb) at 1/1000 dilution and [ab150120](#) (AlexaFluor®594 Goat anti-Mouse secondary) at 1/500 dilution (red).

The negative controls are as follows;

1. ab198500 at 1/500 dilution followed by [ab150120](#) (AlexaFluor®594 Goat anti-Mouse secondary) at 1/500 dilution.
2. [ab7291](#) (anti-Tubulin mouse mAb) at 1/1000 dilution followed by [ab150077](#) (Alexa Fluor®488 Goat Anti-Rabbit IgG H&L) at 1/500 dilution.



Immunohistochemistry (Formalin/PFA-fixed paraffin-embedded sections) - Anti-PPP2R5E antibody [EPR17147] - C-terminal (ab198500)

Immunohistochemical analysis of paraffin-embedded Human transitional cell carcinoma of bladder tissue labeling PPP2R5E with ab198500 at 1/500 dilution followed by Goat Anti-Rabbit IgG H&L (HRP) (**ab97051**) at 1/500 dilution. Cytoplasm staining on Human transitional cell carcinoma of bladder tissue is observed. Counter-stained with Hematoxylin.

Negative control: Using PBS instead of primary antibody.

Perform heat mediated antigen retrieval with Tris/EDTA buffer pH 9.0 before commencing with IHC staining protocol.

Why choose a recombinant antibody?



Anti-PPP2R5E antibody [EPR17147] - C-terminal (ab198500)

Please note: All products are "FOR RESEARCH USE ONLY. NOT FOR USE IN DIAGNOSTIC PROCEDURES"

Our Abpromise to you: Quality guaranteed and expert technical support

- Replacement or refund for products not performing as stated on the datasheet
- Valid for 12 months from date of delivery
- Response to your inquiry within 24 hours
- We provide support in Chinese, English, French, German, Japanese and Spanish

- Extensive multi-media technical resources to help you
- We investigate all quality concerns to ensure our products perform to the highest standards

If the product does not perform as described on this datasheet, we will offer a refund or replacement. For full details of the Abpromise, please visit <https://www.abcam.com/abpromise> or contact our technical team.

Terms and conditions

- Guarantee only valid for products bought direct from Abcam or one of our authorized distributors