


### Anti-PPP6C/Ppv antibody ab70634

★★★★★ [1 Abreviews](#) [1 References](#) [2 Images](#)

#### Overview

<b>Product name</b>	Anti-PPP6C/Ppv antibody
<b>Description</b>	Rabbit polyclonal to PPP6C/Ppv
<b>Host species</b>	Rabbit
<b>Tested applications</b>	<b>Suitable for:</b> WB, IP
<b>Species reactivity</b>	<b>Reacts with:</b> Mouse, Human <b>Predicted to work with:</b> Rat, Rabbit, Horse, Chicken, Guinea pig, Cow, Dog, Turkey, Pig, Xenopus laevis, Chimpanzee, Zebrafish, Rhesus monkey, Gorilla, Orangutan, Xenopus tropicalis 
<b>Immunogen</b>	Synthetic peptide corresponding to Human PPP6C/Ppv (C terminal). Database link: <a href="#">NP_002712.1</a>
<b>Positive control</b>	Whole cell lysates from HeLa, 293T and NIH3T3 cells.
<b>General notes</b>	<p>The Life Science industry has been in the grips of a reproducibility crisis for a number of years. Abcam is leading the way in addressing this with our range of recombinant monoclonal antibodies and knockout edited cell lines for gold-standard validation. Please check that this product meets your needs before purchasing.</p> <p>If you have any questions, special requirements or concerns, please send us an inquiry and/or contact our Support team ahead of purchase. Recommended alternatives for this product can be found below, along with publications, customer reviews and Q&amp;As</p>

#### Properties

<b>Form</b>	Liquid
<b>Storage instructions</b>	Shipped at 4°C. Upon delivery aliquot and store at -20°C. Avoid freeze / thaw cycles.
<b>Storage buffer</b>	pH: 7 Preservative: 0.09% Sodium azide Constituents: 1.764% Sodium citrate, 1.815% Tris, 0.021% PBS
<b>Purity</b>	Immunogen affinity purified
<b>Clonality</b>	Polyclonal
<b>Isotype</b>	IgG

## Applications

### The Abpromise guarantee

Our **Abpromise guarantee** covers the use of ab70634 in the following tested applications.

The application notes include recommended starting dilutions; optimal dilutions/concentrations should be determined by the end user.

Application	Abreviews	Notes
WB	★★★★★ (1)	1/1000 - 1/10000. Detects a band of approximately 35 kDa (predicted molecular weight: 35 kDa).
IP		Use at 2-5 µg/mg of lysate.

## Target

### Function

Catalytic subunit of protein phosphatase 6 (PP6). PP6 is a component of a signaling pathway regulating cell cycle progression in response to IL2 receptor stimulation. N-terminal domain restricts G1 to S phase progression in cancer cells, in part through control of cyclin D1. Downregulates MAP3K7 kinase activation of the IL1 signaling pathway by dephosphorylation of MAP3K7.

### Tissue specificity

Ubiquitously expressed in all tissues tested with highest expression levels in testis, heart, kidney, brain, stomach, liver and skeletal muscle and lowest in placenta, lung colon and spleen.

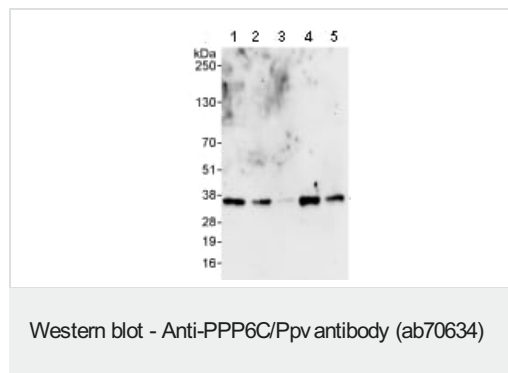
### Sequence similarities

Belongs to the PPP phosphatase family. PP-6 (PP-V) subfamily.

### Cellular localization

Cytoplasm.

## Images



**All lanes :** Anti-PPP6C/Ppv antibody (ab70634) at 0.4 µg/ml

**Lane 1 :** HeLa whole cell lysate at 50 µg

**Lane 2 :** HeLa whole cell lysate at 15 µg

**Lane 3 :** HeLa whole cell lysate at 5 µg

**Lane 4 :** 293T whole cell lysate at 50 µg

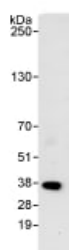
**Lane 5 :** NIH3T3 whole cell lysate at 50 µg

Developed using the ECL technique.

**Predicted band size:** 35 kDa

**Observed band size:** 35 kDa

**Exposure time:** 3 minutes



Immunoprecipitation - Anti-PPP6C/Ppv antibody  
(ab70634)

Detection of PPP6C/Ppv by Western Blot of Immunoprecipitate.  
ab70634 at 1 µg/ml staining PPP6C/Ppv in HeLa whole cell lysate  
immunoprecipitated using ab70634 at 3 µg/mg lysate (1 mg/IP; 20%  
of IP loaded/lane). Detection: chemiluminescence with exposure  
time of 30 seconds.

**Please note:** All products are "FOR RESEARCH USE ONLY. NOT FOR USE IN DIAGNOSTIC PROCEDURES"

### Our Abpromise to you: Quality guaranteed and expert technical support

---

- Replacement or refund for products not performing as stated on the datasheet
- Valid for 12 months from date of delivery
- Response to your inquiry within 24 hours
- We provide support in Chinese, English, French, German, Japanese and Spanish
- Extensive multi-media technical resources to help you
- We investigate all quality concerns to ensure our products perform to the highest standards

If the product does not perform as described on this datasheet, we will offer a refund or replacement. For full details of the Abpromise, please visit <https://www.abcam.com/abpromise> or contact our technical team.

### Terms and conditions

---

- Guarantee only valid for products bought direct from Abcam or one of our authorized distributors