


## Product datasheet

### Anti-PPWD1 antibody [EPR7439] $\alpha$ b150356

Recombinant RabMAb

3 Images

#### Overview

Product name	Anti-PPWD1 antibody [EPR7439]
Description	Rabbit monoclonal [EPR7439] to PPWD1
Host species	Rabbit
Tested applications	<b>Suitable for:</b> Flow Cyt (Intra), WB <b>Unsuitable for:</b> ICC/IF, IHC-P or IP
Species reactivity	<b>Reacts with:</b> Mouse, Human <b>Predicted to work with:</b> Rat 
Immunogen	Synthetic peptide within Human PPWD1 aa 1-100. The exact sequence is proprietary.
Positive control	HeLa, NIH3T3, and 293T cell lysates, HeLa cells
General notes	<p>This product is a recombinant monoclonal antibody, which offers several advantages including:</p> <ul style="list-style-type: none"> <li>- High batch-to-batch consistency and reproducibility</li> <li>- Improved sensitivity and specificity</li> <li>- Long-term security of supply</li> <li>- Animal-free production</li> </ul> <p>For more information <a href="#">see here</a>.</p> <p>Our RabMAb<sup>®</sup> technology is a patented hybridoma-based technology for making rabbit monoclonal antibodies. For details on our patents, please refer to <a href="#">RabMAb<sup>®</sup> patents</a>.</p>

#### Properties

Form	Liquid
Storage instructions	Shipped at 4°C. Upon delivery aliquot and store at -20°C. Avoid freeze / thaw cycles.
Storage buffer	pH: 7.2 Preservative: 0.01% Sodium azide Constituents: 9% PBS, 40% Glycerol (glycerin, glycerine), 0.05% BSA, 50% Tissue culture supernatant
Purity	Tissue culture supernatant
Clonality	Monoclonal
Clone number	EPR7439

Isotype

IgG

## Applications

### The Abpromise guarantee

Our **Abpromise guarantee** covers the use of ab150356 in the following tested applications.

The application notes include recommended starting dilutions; optimal dilutions/concentrations should be determined by the end user.

Application	Abreviews	Notes
Flow Cyt (Intra)		1/100 - 1/500. <b>ab172730</b> - Rabbit monoclonal IgG, is suitable for use as an isotype control with this antibody.
WB		1/1000 - 1/10000. Detects a band of approximately 74 kDa (predicted molecular weight: 74 kDa).

### Application notes

Is unsuitable for ICC/IF, IHC-P or IP.

## Target

### Function

Putative peptidylprolyl isomerase (PPlase). PPlases accelerate the folding of proteins. It catalyzes the cis-trans isomerization of proline imidic peptide bonds in oligopeptides. May be involved in pre-mRNA splicing.

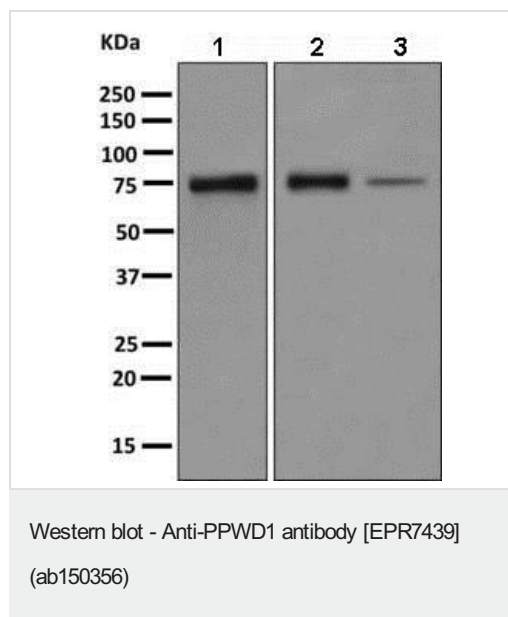
### Sequence similarities

Belongs to the cyclophilin-type PPlase family. PPIL1 subfamily.  
Contains 1 PPlase cyclophilin-type domain.  
Contains 4 WD repeats.

### Cellular localization

Nucleus. Associated with spliceosomal complexes.

## Images



**All lanes** : Anti-PPWD1 antibody [EPR7439] (ab150356) at 1/1000 dilution

**Lane 1** : HeLa cell lysate

**Lane 2** : NIH3T3 cell lysate

**Lane 3** : 293T cell lysate

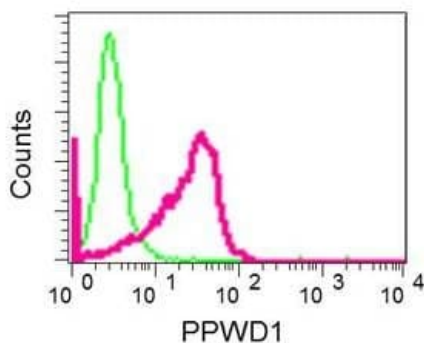
Lysates/proteins at 10 µg per lane.

### Secondary

**All lanes** : HRP labelled goat anti-rabbit at 1/2000 dilution

**Predicted band size:** 74 kDa

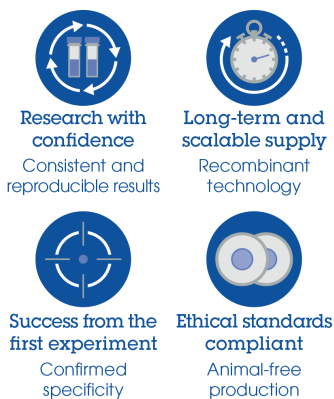
**Observed band size:** 74 kDa



Intracellular flow cytometrical analysis of permeabilized HeLa cells with ab150356 antibody at a dilution of 1/100 (red) or a rabbit IgG (negative) (green).

Flow Cytometry (Intracellular) - Anti-PPWD1  
antibody [EPR7439] (ab150356)

### Why choose a recombinant antibody?



Anti-PPWD1 antibody [EPR7439] (ab150356)

**Please note:** All products are "FOR RESEARCH USE ONLY. NOT FOR USE IN DIAGNOSTIC PROCEDURES"

### Our Abpromise to you: Quality guaranteed and expert technical support

- Replacement or refund for products not performing as stated on the datasheet
- Valid for 12 months from date of delivery
- Response to your inquiry within 24 hours
- We provide support in Chinese, English, French, German, Japanese and Spanish
- Extensive multi-media technical resources to help you
- We investigate all quality concerns to ensure our products perform to the highest standards

If the product does not perform as described on this datasheet, we will offer a refund or replacement. For full details of the Abpromise, please visit <https://www.abcam.com/abpromise> or contact our technical team.

### Terms and conditions

- Guarantee only valid for products bought direct from Abcam or one of our authorized distributors