


Anti-PPWD1 antibody [EPR7439] - BSA and Azide free ab248938

Recombinant RabMAb

3 Images

Overview

Product name	Anti-PPWD1 antibody [EPR7439] - BSA and Azide free
Description	Rabbit monoclonal [EPR7439] to PPWD1 - BSA and Azide free
Host species	Rabbit
Tested applications	Suitable for: Flow Cyt (Intra), WB Unsuitable for: ICC/IF, IHC-P or IP
Species reactivity	Reacts with: Mouse, Human Predicted to work with: Rat 
Immunogen	Synthetic peptide. This information is proprietary to Abcam and/or its suppliers.
General notes	<p>ab248938 is the carrier-free version of ab150356.</p> <p>Our carrier-free antibodies are typically supplied in a PBS-only formulation, purified and free of BSA, sodium azide and glycerol. The carrier-free buffer and high concentration allow for increased conjugation efficiency.</p> <p>This conjugation-ready format is designed for use with fluorochromes, metal isotopes, oligonucleotides, and enzymes, which makes them ideal for antibody labelling, functional and cell-based assays, flow-based assays (e.g. mass cytometry) and Multiplex Imaging applications.</p> <p>Use our conjugation kits for antibody conjugates that are ready-to-use in as little as 20 minutes with <1 minute hands-on-time and 100% antibody recovery: available for fluorescent dyes, HRP, biotin and gold.</p> <p>This product is compatible with the Maxpar[®] Antibody Labeling Kit from Fluidigm, without the need for antibody preparation. Maxpar[®] is a trademark of Fluidigm Canada Inc.</p> <p>This product is a recombinant monoclonal antibody, which offers several advantages including:</p> <ul style="list-style-type: none"> - High batch-to-batch consistency and reproducibility - Improved sensitivity and specificity - Long-term security of supply - Animal-free production <p>For more information see here.</p> <p>Our RabMAb[®] technology is a patented hybridoma-based technology for making rabbit monoclonal antibodies. For details on our patents, please refer to RabMAb[®] patents.</p>

Properties

Form	Liquid
Storage instructions	Shipped at 4°C. Store at +4°C. Do Not Freeze.
Storage buffer	pH: 7.2 Constituent: PBS
Carrier free	Yes
Purity	Affinity purified
Clonality	Monoclonal
Clone number	EPR7439
Isotype	IgG

Applications

The Abpromise guarantee Our **Abpromise guarantee** covers the use of ab248938 in the following tested applications. The application notes include recommended starting dilutions; optimal dilutions/concentrations should be determined by the end user.

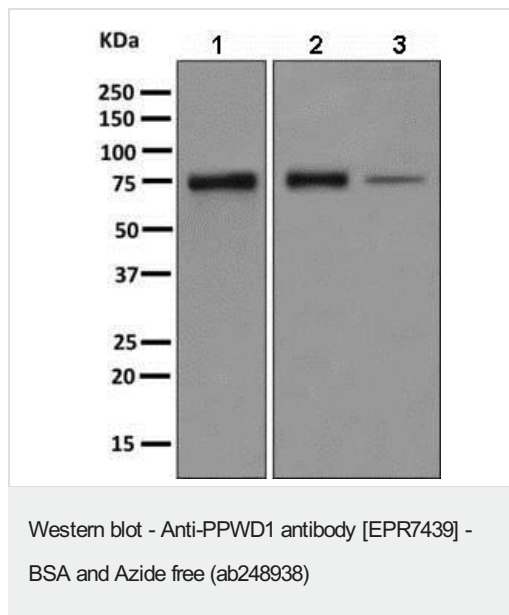
Application	Abreviews	Notes
Flow Cyt (Intra)		Use at an assay dependent concentration.
WB		Use at an assay dependent concentration. Detects a band of approximately 74 kDa (predicted molecular weight: 74 kDa).

Application notes Is unsuitable for ICC/IF, IHC-P or IP.

Target

Function	Putative peptidylprolyl isomerase (PPlase). PPlases accelerate the folding of proteins. It catalyzes the cis-trans isomerization of proline imidic peptide bonds in oligopeptides. May be involved in pre-mRNA splicing.
Sequence similarities	Belongs to the cyclophilin-type PPlase family. PPIL1 subfamily. Contains 1 PPlase cyclophilin-type domain. Contains 4 WD repeats.
Cellular localization	Nucleus. Associated with spliceosomal complexes.

Images



All lanes : Anti-PPWD1 antibody [EPR7439] ([ab150356](#)) at 1/1000 dilution

Lane 1 : HeLa cell lysate

Lane 2 : NIH3T3 cell lysate

Lane 3 : 293T cell lysate

Lysates/proteins at 10 µg per lane.

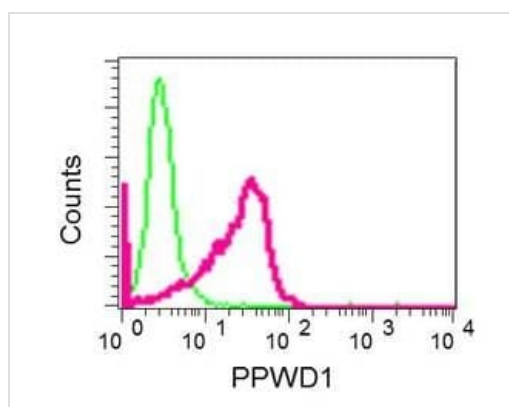
Secondary

All lanes : HRP labelled goat anti-rabbit at 1/2000 dilution

Predicted band size: 74 kDa

Observed band size: 74 kDa

This data was developed using [ab150356](#), the same antibody clone in a different buffer formulation.



Flow Cytometry (Intracellular) - Anti-PPWD1 antibody [EPR7439] - BSA and Azide free (ab248938)

This data was developed using [ab150356](#), the same antibody clone in a different buffer formulation.

Intracellular flow cytometrical analysis of permeabilized HeLa cells with [ab150356](#) antibody at a dilution of 1/100 (red) or a rabbit IgG (negative) (green).

Why choose a recombinant antibody?



Research with confidence
Consistent and reproducible results



Long-term and scalable supply
Recombinant technology



Success from the first experiment
Confirmed specificity



Ethical standards compliant
Animal-free production

Anti-PPWD1 antibody [EPR7439] - BSA and Azide free (ab248938)

Please note: All products are "FOR RESEARCH USE ONLY. NOT FOR USE IN DIAGNOSTIC PROCEDURES"

Our Abpromise to you: Quality guaranteed and expert technical support

- Replacement or refund for products not performing as stated on the datasheet
- Valid for 12 months from date of delivery
- Response to your inquiry within 24 hours
- We provide support in Chinese, English, French, German, Japanese and Spanish
- Extensive multi-media technical resources to help you
- We investigate all quality concerns to ensure our products perform to the highest standards

If the product does not perform as described on this datasheet, we will offer a refund or replacement. For full details of the Abpromise, please visit <https://www.abcam.com/abpromise> or contact our technical team.

Terms and conditions

- Guarantee only valid for products bought direct from Abcam or one of our authorized distributors