

## Product datasheet

### Anti-PRA1 antibody [EPR1747Y] ab76413


KO **VALIDATED**

Recombinant

RabMAb

[1 Abreviews](#) [1 References](#) [3 Images](#)

#### Overview

Product name	Anti-PRA1 antibody [EPR1747Y]
Description	Rabbit monoclonal [EPR1747Y] to PRA1
Host species	Rabbit
Tested applications	<b>Suitable for:</b> WB <b>Unsuitable for:</b> ICC/IF or IHC-P
Species reactivity	<b>Reacts with:</b> Human <b>Predicted to work with:</b> Mouse, Rat 
Immunogen	Synthetic peptide within Human PRA1 (C terminal). The exact sequence is proprietary.
Positive control	WB: HeLa and HEK-293T cell lysates.
General notes	<p>This product is a recombinant monoclonal antibody, which offers several advantages including:</p> <ul style="list-style-type: none"> <li>- High batch-to-batch consistency and reproducibility</li> <li>- Improved sensitivity and specificity</li> <li>- Long-term security of supply</li> <li>- Animal-free production</li> </ul> <p>For more information <a href="#">see here</a>.</p> <p>Our RabMAb<sup>®</sup> technology is a patented hybridoma-based technology for making rabbit monoclonal antibodies. For details on our patents, please refer to <a href="#">RabMAb<sup>®</sup> patents</a>.</p>

#### Properties

Form	Liquid
Storage instructions	Shipped at 4°C. Upon delivery aliquot and store at -20°C. Avoid freeze / thaw cycles.
Storage buffer	pH: 7.20 Preservative: 0.01% Sodium azide Constituents: 9% PBS, 40% Glycerol (glycerin, glycerine), 0.05% BSA, 50% Tissue culture supernatant
Purity	Protein A purified
Clonality	Monoclonal
Clone number	EPR1747Y

Isotype

IgG

## Applications

### The Abpromise guarantee

Our **Abpromise guarantee** covers the use of ab76413 in the following tested applications.

The application notes include recommended starting dilutions; optimal dilutions/concentrations should be determined by the end user.

Application	Abreviews	Notes
WB		1/1000 - 1/20000. Predicted molecular weight: 21 kDa.

### Application notes

Is unsuitable for ICC/IF or IHC-P.

## Target

### Function

General Rab protein regulator required for vesicle formation from the Golgi complex. May control vesicle docking and fusion by mediating the action of Rab GTPases to the SNARE complexes. In addition it inhibits the removal of Rab GTPases from the membrane by GDI.

### Tissue specificity

Ubiquitous. Strongest expression found in placenta, pituitary gland, kidney, lung and stomach.

### Sequence similarities

Belongs to the PRA1 family.

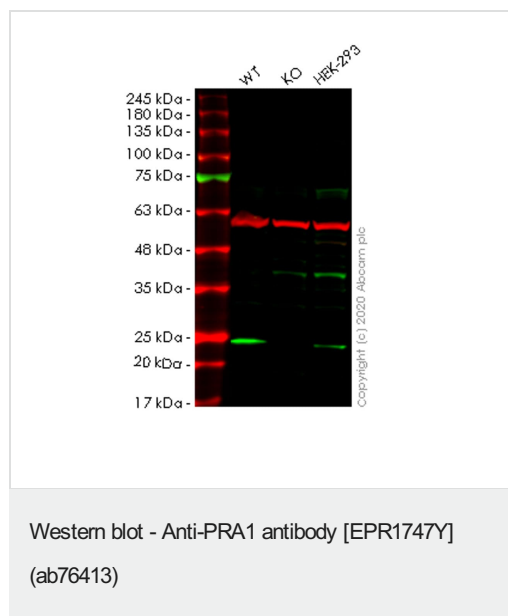
### Developmental stage

In fetal tissues, it is more abundant in kidney and lung.

### Cellular localization

Cell membrane. Cytoplasm. Golgi apparatus. Cytoplasmic vesicle > secretory vesicle > synaptic vesicle. According to some authors, it is an integral membrane protein, while others showed that it is cytoplasmic and membrane-associated to Golgi and synaptic vesicles.

## Images



**All lanes :** Anti-PRA1 antibody [EPR1747Y] (ab76413) at 1/1000 dilution

**Lane 1 :** Wild-type HeLa cell lysate

**Lane 2 :** RABAC1 knockout HeLa cell lysate

**Lane 3 :** HEK293 cell lysate

Lysates/proteins at 20 µg per lane.

### Secondary

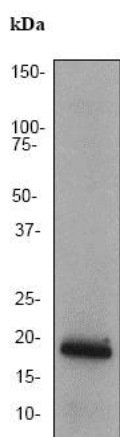
**All lanes :** Goat anti-Rabbit IgG H&L (IRDye® 800CW) preadsorbed (**ab216773**) at 1/20000 dilution

**Predicted band size:** 21 kDa

**Observed band size:** 21 kDa

**Lanes 1-3:** Merged signal (red and green). Green - ab76413 observed at 21 kDa. Red - loading control **ab7291** observed at 50 kDa.

ab76413 Anti-PRA1 antibody [EPR1747Y] was shown to specifically react with PRA1 in wild-type HeLa cells. Loss of signal was observed when knockout cell line **ab265702** (knockout cell lysate **ab258162**) was used. Wild-type and PRA1 knockout samples were subjected to SDS-PAGE. ab76413 and Anti-alpha Tubulin antibody [DM1A] - Loading Control (**ab7291**) were incubated overnight at 4°C at 1 in 1000 dilution and 1 in 20000 dilution respectively. Blots were developed with Goat anti-Rabbit IgG H&L (IRDye® 800CW) preadsorbed (**ab216773**) and Goat anti-Mouse IgG H&L (IRDye® 680RD) preadsorbed (**ab216776**) secondary antibodies at 1 in 20000 dilution for 1 hour at room temperature before imaging.



Western blot - Anti-PRA1 antibody [EPR1747Y]  
(ab76413)

Anti-PRA1 antibody [EPR1747Y] (ab76413) at 1/2000 dilution +  
293 cell lysate at 10 µg

### Secondary

HRP labelled goat anti-rabbit at 1/2000 dilution

**Predicted band size:** 21 kDa

**Observed band size:** 21 kDa

### Why choose a recombinant antibody?



**Research with confidence**  
Consistent and reproducible results



**Long-term and scalable supply**  
Recombinant technology



**Success from the first experiment**  
Confirmed specificity



**Ethical standards compliant**  
Animal-free production

Anti-PRA1 antibody [EPR1747Y] (ab76413)

**Please note:** All products are "FOR RESEARCH USE ONLY. NOT FOR USE IN DIAGNOSTIC PROCEDURES"

### Our Abpromise to you: Quality guaranteed and expert technical support

---

- Replacement or refund for products not performing as stated on the datasheet
- Valid for 12 months from date of delivery
- Response to your inquiry within 24 hours
- We provide support in Chinese, English, French, German, Japanese and Spanish
- Extensive multi-media technical resources to help you
- We investigate all quality concerns to ensure our products perform to the highest standards

If the product does not perform as described on this datasheet, we will offer a refund or replacement. For full details of the Abpromise, please visit <https://www.abcam.com/abpromise> or contact our technical team.

### Terms and conditions

---

- Guarantee only valid for products bought direct from Abcam or one of our authorized distributors