


Anti-PRAK/MK5 antibody ab228617

1 Image

Overview

Product name	Anti-PRAK/MK5 antibody
Description	Rabbit polyclonal to PRAK/MK5
Host species	Rabbit
Tested applications	Suitable for: WB
Species reactivity	Reacts with: Human Predicted to work with: Mouse, Rat, Chicken, Cow, Pig, Zebrafish, Rhesus monkey 
Immunogen	Recombinant fragment within Human PRAK/MK5 (internal sequence). The exact sequence is proprietary. Database link: Q8IW41
Positive control	WB: HepG2 whole cell lysate.
General notes	<p>The Life Science industry has been in the grips of a reproducibility crisis for a number of years. Abcam is leading the way in addressing this with our range of recombinant monoclonal antibodies and knockout edited cell lines for gold-standard validation. Please check that this product meets your needs before purchasing.</p> <p>If you have any questions, special requirements or concerns, please send us an inquiry and/or contact our Support team ahead of purchase. Recommended alternatives for this product can be found below, along with publications, customer reviews and Q&As</p>

Properties

Form	Liquid
Storage instructions	Shipped at 4°C. Store at +4°C short term (1-2 weeks). Upon delivery aliquot. Store at -20°C long term. Avoid freeze / thaw cycle.
Storage buffer	pH: 7.00 Preservative: 0.01% Thimerosal (merthiolate) Constituents: 78.99% PBS, 1% BSA, 20% Glycerol (glycerin, glycerine)
Purity	Immunogen affinity purified
Clonality	Polyclonal
Isotype	IgG

Applications

The Abpromise guarantee

Our **Abpromise guarantee** covers the use of ab228617 in the following tested applications.

The application notes include recommended starting dilutions; optimal dilutions/concentrations should be determined by the end user.

Application	Abreviews	Notes
WB		1/500 - 1/3000. Predicted molecular weight: 54 kDa.

Target

Function

Mediates stress-induced small heat shock protein 27 phosphorylation.

Tissue specificity

Expressed ubiquitously.

Sequence similarities

Belongs to the protein kinase superfamily. CAMK Ser/Thr protein kinase family.
Contains 1 protein kinase domain.

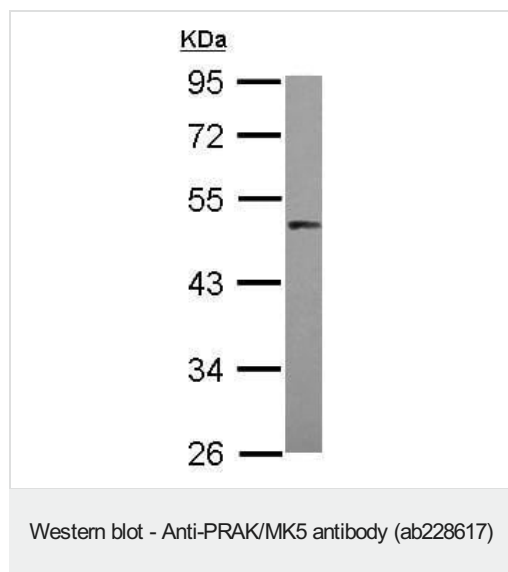
Post-translational modifications

Phosphorylated on Thr-182; which is the regulatory phosphorylation site and is located on the T-loop/loop 12.

Cellular localization

Cytoplasm. Nucleus. Also observed in the nucleus.

Images



Anti-PRAK/MK5 antibody (ab228617) at 1/1000 dilution + HepG2 (human liver hepatocellular carcinoma cell line) whole cell lysate at 30 µg

Predicted band size: 54 kDa

10% SDS-PAGE gel.

Please note: All products are "FOR RESEARCH USE ONLY. NOT FOR USE IN DIAGNOSTIC PROCEDURES"

Our Abpromise to you: Quality guaranteed and expert technical support

- Replacement or refund for products not performing as stated on the datasheet
- Valid for 12 months from date of delivery
- Response to your inquiry within 24 hours
- We provide support in Chinese, English, French, German, Japanese and Spanish

- Extensive multi-media technical resources to help you
- We investigate all quality concerns to ensure our products perform to the highest standards

If the product does not perform as described on this datasheet, we will offer a refund or replacement. For full details of the Abpromise, please visit <https://www.abcam.com/abpromise> or contact our technical team.

Terms and conditions

- Guarantee only valid for products bought direct from Abcam or one of our authorized distributors