

## Product datasheet

# Anti-PRDM14 antibody ab187881

★ ★ ★ ★ ★ [1 Abreviews](#) [10 References](#) [4 Images](#)

### Overview

<b>Product name</b>	Anti-PRDM14 antibody
<b>Description</b>	Rabbit polyclonal to PRDM14
<b>Host species</b>	Rabbit
<b>Tested applications</b>	<b>Suitable for:</b> ICC/IF, ChIP, WB, IHC-P, IP
<b>Species reactivity</b>	<b>Reacts with:</b> Mouse, Rat, Human
<b>Immunogen</b>	Recombinant fragment corresponding to Human PRDM14. Database link: <a href="#">Q9GZV8</a>
<b>General notes</b>	<p>The Life Science industry has been in the grips of a reproducibility crisis for a number of years. Abcam is leading the way in addressing this with our range of recombinant monoclonal antibodies and knockout edited cell lines for gold-standard validation. Please check that this product meets your needs before purchasing.</p> <p>If you have any questions, special requirements or concerns, please send us an inquiry and/or contact our Support team ahead of purchase. Recommended alternatives for this product can be found below, along with publications, customer reviews and Q&amp;As</p>

### Properties

<b>Form</b>	Liquid
<b>Storage instructions</b>	Shipped at 4°C. Store at +4°C short term (1-2 weeks). Upon delivery aliquot. Store at -20°C long term. Avoid freeze / thaw cycle.
<b>Storage buffer</b>	pH: 7.30 Preservative: 0.02% Sodium azide Constituents: 50% Glycerol, 49% PBS
<b>Purity</b>	Immunogen affinity purified
<b>Clonality</b>	Polyclonal
<b>Isotype</b>	IgG

### Applications

**The Abpromise guarantee** Our **[Abpromise guarantee](#)** covers the use of ab187881 in the following tested applications.

The application notes include recommended starting dilutions; optimal dilutions/concentrations should be determined by the end user.

Application	Abreviews	Notes
ICC/IF		Use at an assay dependent concentration.
ChIP		1/20 - 1/100.
WB		1/500 - 1/2000. Predicted molecular weight: 64 kDa.
IHC-P		Use at an assay dependent concentration.
IP		Use at an assay dependent concentration.

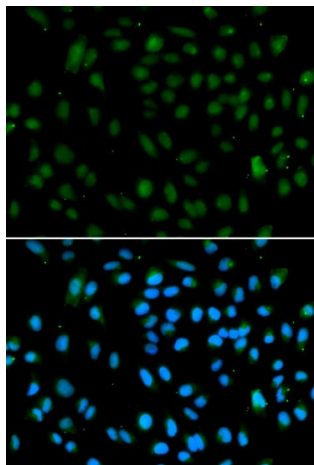
## Target

**Function** May be involved in transcriptional regulation.

**Sequence similarities** Contains 6 C2H2-type zinc fingers.  
Contains 1 SET domain.

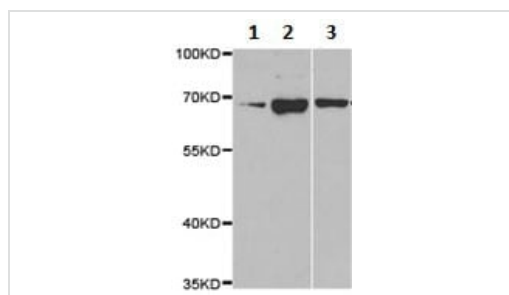
**Cellular localization** Nucleus.

## Images



Immunocytochemistry/Immunofluorescence analysis of A549 cells using ab187881. Blue DAPI for nuclear staining.

Immunocytochemistry/ Immunofluorescence - Anti-PRDM14 antibody (ab187881)



Western blot - Anti-PRDM14 antibody (ab187881)

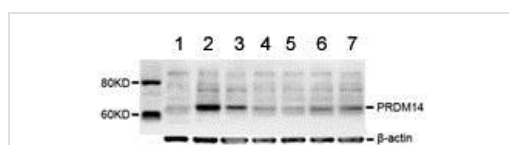
**All lanes :** Anti-PRDM14 antibody (ab187881) at 1/500 dilution

**Lane 1 :** BT474 cell extract

**Lane 2 :** Jurkat cell extract

**Lane 3 :** HeLa cell extract

**Predicted band size:** 64 kDa



Western blot - Anti-PRDM14 antibody (ab187881)

**All lanes :** Anti-PRDM14 antibody (ab187881) at 1/500 dilution

**Lane 1 :** shRNA-6

**Lane 2 :** Control

**Lane 3 :** shRNA-5

**Lane 4 :** shRNA-4

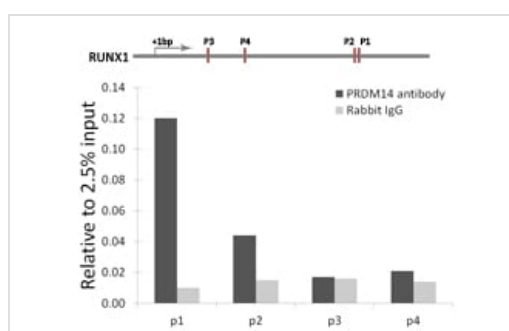
**Lane 5 :** shRNA-3

**Lane 6 :** shRNA-2

**Lane 7 :** shRNA-1

**Predicted band size:** 64 kDa

Western blot analysis of various groups from PA-1 cell line. ShRNA-1, shRNA-2, shRNA-3, shRNA-4, shRNA-5, shRNA-6 show knock-down samples which are transfected by different shRNAs targeting PRDM14. Control represents the untreated one.



ChIP - Anti-PRDM14 antibody (ab187881)

Chromatin immunoprecipitation analysis of RUNX1 gene from 293 cell line, using ab187881 and rabbit IgG. P1, P2, P3 and P4 were four probes located on RUNX1 gene as the schematic diagram illustrated. The amount of immunoprecipitated DNA was checked by quantitative PCR. Histogram was constructed by the ratios of the immunoprecipitated DNA to the input.

**Please note:** All products are "FOR RESEARCH USE ONLY. NOT FOR USE IN DIAGNOSTIC PROCEDURES"

**Our Abpromise to you: Quality guaranteed and expert technical support**

- Replacement or refund for products not performing as stated on the datasheet
- Valid for 12 months from date of delivery
- Response to your inquiry within 24 hours
- We provide support in Chinese, English, French, German, Japanese and Spanish
- Extensive multi-media technical resources to help you
- We investigate all quality concerns to ensure our products perform to the highest standards

If the product does not perform as described on this datasheet, we will offer a refund or replacement. For full details of the Abpromise, please visit <https://www.abcam.com/abpromise> or contact our technical team.

#### **Terms and conditions**

---

- Guarantee only valid for products bought direct from Abcam or one of our authorized distributors