

# Anti-PRDM1/Blimp1 antibody [EPR25163-80] ab307644

Recombinant RabMAb

5 Images

### Overview

<b>Product name</b>	Anti-PRDM1/Blimp1 antibody [EPR25163-80]
<b>Description</b>	Rabbit monoclonal [EPR25163-80] to PRDM1/Blimp1
<b>Host species</b>	Rabbit
<b>Tested applications</b>	<b>Suitable for:</b> WB, IHC-P, IP <b>Unsuitable for:</b> Flow Cyt (Intra) or ICC/IF
<b>Species reactivity</b>	<b>Reacts with:</b> Human
<b>Immunogen</b>	Recombinant fragment. This information is proprietary to Abcam and/or its suppliers.
<b>Positive control</b>	WB: SR lysates IHC-P: Human tonsil tissues. IP: SR cell
<b>General notes</b>	<p>This product is a recombinant monoclonal antibody, which offers several advantages including:</p> <ul style="list-style-type: none"><li>- High batch-to-batch consistency and reproducibility</li><li>- Improved sensitivity and specificity</li><li>- Long-term security of supply</li><li>- Animal-free production</li></ul> <p>For more information <a href="#">see here</a>.</p> <p>Our RabMAb<sup>®</sup> technology is a patented hybridoma-based technology for making rabbit monoclonal antibodies. For details on our patents, please refer to <a href="#">RabMAb<sup>®</sup> patents</a>.</p>

### Properties

<b>Form</b>	Liquid
<b>Storage instructions</b>	Shipped at 4°C. Store at +4°C short term (1-2 weeks). Upon delivery aliquot. Store at -20°C long term. Avoid freeze / thaw cycle.
<b>Storage buffer</b>	pH: 7.20 Preservative: 0.01% Sodium azide Constituents: 40% Glycerol (glycerin, glycerine), 0.05% BSA, 59% PBS
<b>Purity</b>	Protein A purified
<b>Clonality</b>	Monoclonal
<b>Clone number</b>	EPR25163-80
<b>Isotype</b>	IgG

## Applications

### The Abpromise guarantee

Our **Abpromise guarantee** covers the use of ab307644 in the following tested applications.

The application notes include recommended starting dilutions; optimal dilutions/concentrations should be determined by the end user.

Application	Abreviews	Notes
WB		1/1000. Predicted molecular weight: 100 kDa.
IHC-P		1/500. Perform heat mediated antigen retrieval with Tris/EDTA buffer pH 9.0 before commencing with IHC staining protocol.
IP		1/30.

### Application notes

Is unsuitable for Flow Cyt (Intra) or ICC/IF.

## Target

### Function

Transcriptional repressor that binds specifically to the PRDI element in the promoter of the beta-interferon gene (PubMed:1851123). Drives the maturation of B-lymphocytes into Ig secreting cells (PubMed:12626569).

### Sequence similarities

Belongs to the class V-like SAM-binding methyltransferase superfamily.  
Contains 4 C2H2-type zinc fingers.  
Contains 1 SET domain.

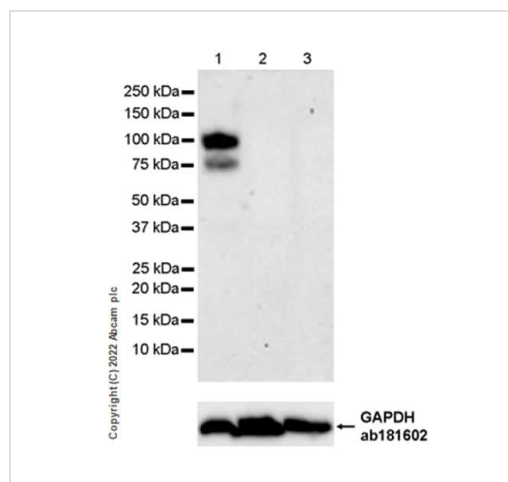
### Post-translational modifications

Sumoylation at Lys-816 by PIAS1 augments transcriptional repressor activity, and is critical for plasma cell differentiation.  
Ubiquitinated by the SCF(FBXO11) complex, leading to its degradation by the proteasome.

### Cellular localization

Nucleus. Cytoplasm.

## Images



Western blot - Anti-PRDM1/Blimp1 antibody [EPR25163-80] (ab307644)

**All lanes** : Anti-PRDM1/Blimp1 antibody [EPR25163-80] (ab307644) at 1/1000 dilution

**Lane 1** : SR (human pleural effusion lymphoblast) whole cell lysate  
**Lane 2** : Raji (human burkitts lymphoma b lymphocyte) whole cell lysate

**Lane 3** : NAMALWA (human burkitts lymphoma b lymphocyte) whole cell lysate

Lysates/proteins at 20 µg per lane.

### Secondary

**All lanes** : Goat Anti-Rabbit IgG, (H+L), Peroxidase conjugated (**ab97051**) at 1/20000 dilution

**Predicted band size:** 100 kDa

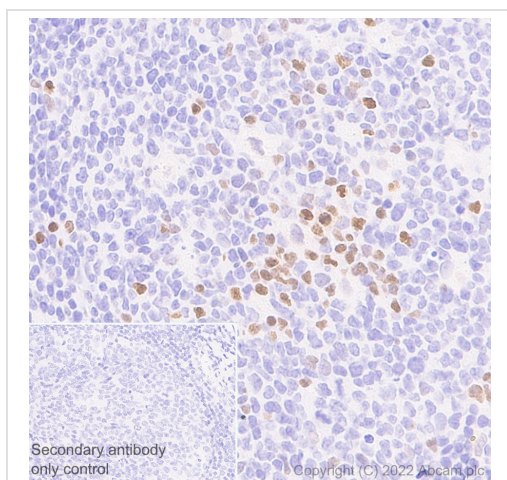
**Observed band size:** 100 kDa

Blocking and diluting buffer and concentration: 5% NFDN/TBST

Negative control: Raji, NAMALWA (PMID: 28842558).

Lysates were freshly made and used for Western blotting immediately to minimize protein degradation.

Exposure time: 180 seconds

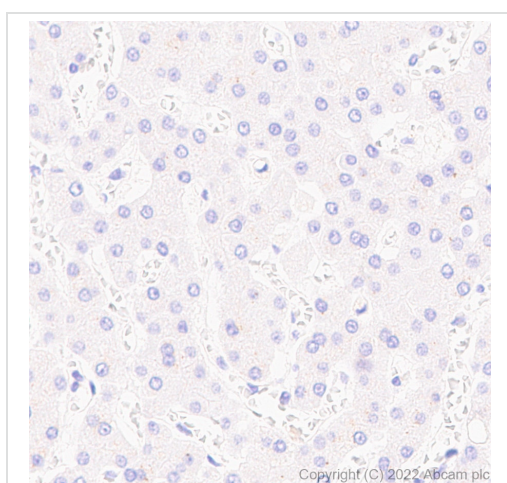


Immunohistochemistry (Formalin/PFA-fixed paraffin-embedded sections) - Anti-PRDM1/Blimp1 antibody [EPR25163-80] (ab307644)

Immunohistochemical analysis of paraffin-embedded Human tonsil tissue labeling PRDM1/Blimp1 with ab307644 at 1/500 (0.924 ug/ml) followed by a LeicaDS9800 (Bond™ Polymer Refine Detection) at Ready to use dilution. Nuclear staining on human tonsil (PMID: 24438193). The section was incubated with ab307644 for 30 mins at room temperature. The immunostaining was performed on a Leica Biosystems BOND® RX instrument Counterstained with Hematoxylin.

Secondary antibody only control: Secondary antibody is LeicaDS9800 (Bond™ Polymer Refine Detection) at Ready to use dilution.

Heat mediated antigen retrieval was performed with Tris-EDTA buffer (pH 9.0, Epitope Retrieval Solution2) for 20 mins

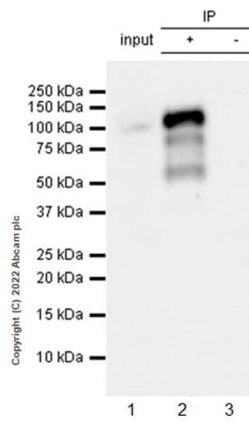


Immunohistochemistry (Formalin/PFA-fixed paraffin-embedded sections) - Anti-PRDM1/Blimp1 antibody [EPR25163-80] (ab307644)

Immunohistochemical analysis of paraffin-embedded Human liver tissue labeling PRDM1/Blimp1 with ab307644 at 1/500 (0.924 ug/ml) followed by a LeicaDS9800 (Bond™ Polymer Refine Detection) at Ready to use dilution. Negative control: No staining on human liver. The section was incubated with ab307644 for 30 mins at room temperature. The immunostaining was performed on a Leica Biosystems BOND® RX instrument Counterstained with Hematoxylin.

Secondary antibody only control: Secondary antibody is LeicaDS9800 (Bond™ Polymer Refine Detection) at Ready to use dilution.

Heat mediated antigen retrieval was performed with Tris-EDTA buffer (pH 9.0, Epitope Retrieval Solution2) for 20 mins



Immunoprecipitation - Anti-PRDM1/Blimp1 antibody  
[EPR25163-80] (ab307644)

PRDM1/Blimp1 was immunoprecipitated from 0.35 mg SR (human pleural effusion lymphoblast) whole cell lysate 10 µg with ab307644 at 1/30 dilution (2 µg in 0.35 mg lysates). Western blot was performed on the immunoprecipitate using ab307644 at 1/1000 dilution. VeriBlot for IP secondary antibody (HRP) ([ab131366](#)) was used at 1/5000 dilution.

Lane 1: SR (human pleural effusion lymphoblast) whole cell lysate 10 µg

Lane 2: ab307644 IP in SR whole cell lysate

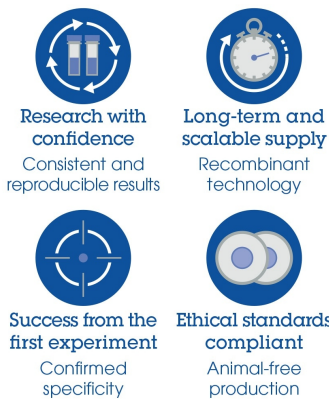
Lane 3: Rabbit monoclonal IgG ([ab172730](#)) instead of ab307644 in SR whole cell lysate

Blocking and dilution buffer and concentration: 5% NFDm/TBST.

Exposure time: 50 seconds

Lysate was freshly made and used for Western blotting immediately to minimize protein degradation.

### Why choose a recombinant antibody?



Anti-PRDM1/Blimp1 antibody [EPR25163-80]  
(ab307644)

**Please note:** All products are "FOR RESEARCH USE ONLY. NOT FOR USE IN DIAGNOSTIC PROCEDURES"

### Our Promise to you: Quality guaranteed and expert technical support

- Replacement or refund for products not performing as stated on the datasheet
- Valid for 12 months from date of delivery
- Response to your inquiry within 24 hours
- We provide support in Chinese, English, French, German, Japanese and Spanish
- Extensive multi-media technical resources to help you
- We investigate all quality concerns to ensure our products perform to the highest standards

If the product does not perform as described on this datasheet, we will offer a refund or replacement. For full details of the Abpromise, please visit <https://www.abcam.com/abpromise> or contact our technical team.

### **Terms and conditions**

---

- Guarantee only valid for products bought direct from Abcam or one of our authorized distributors