

## Product datasheet

# Anti-PRG2 antibody ab187523

[5 References](#) [1 Image](#)

### Overview

---

<b>Product name</b>	Anti-PRG2 antibody
<b>Description</b>	Rabbit polyclonal to PRG2
<b>Host species</b>	Rabbit
<b>Tested applications</b>	<b>Suitable for:</b> WB <b>Unsuitable for:</b> IHC-P
<b>Species reactivity</b>	<b>Reacts with:</b> Mouse, Human
<b>Immunogen</b>	Recombinant full length protein corresponding to Human Major Basic Protein aa 1 to the C-terminus. Database link: <a href="#">P13727</a>

 [Run BLAST with](#)

 [Run BLAST with](#)

### General notes

The Life Science industry has been in the grips of a reproducibility crisis for a number of years. Abcam is leading the way in addressing this with our range of recombinant monoclonal antibodies and knockout edited cell lines for gold-standard validation. Please check that this product meets your needs before purchasing.

If you have any questions, special requirements or concerns, please send us an inquiry and/or contact our Support team ahead of purchase. Recommended alternatives for this product can be found below, along with publications, customer reviews and Q&As

### Properties

---

<b>Form</b>	Liquid
<b>Storage instructions</b>	Shipped at 4°C. Store at +4°C short term (1-2 weeks). Upon delivery aliquot. Store at -20°C long term. Avoid freeze / thaw cycle.
<b>Storage buffer</b>	pH: 7.30 Preservative: 0.02% Sodium azide Constituents: 49% PBS, 50% Glycerol
<b>Purity</b>	Immunogen affinity purified
<b>Clonality</b>	Polyclonal
<b>Isotype</b>	IgG

### Applications

## Applications

### The Abpromise guarantee

Our **Abpromise guarantee** covers the use of ab187523 in the following tested applications.

The application notes include recommended starting dilutions; optimal dilutions/concentrations should be determined by the end user.

Application	Abreviews	Notes
WB		1/500 - 1/2000. Predicted molecular weight: 25 kDa.

### Application notes

Is unsuitable for IHC-P.

## Target

### Function

Cytotoxin and helminthotoxin. Also induces non-cytolytic histamine release from human basophils. Involved in antiparasitic defense mechanisms and immune hypersensitivity reactions. The proform acts as a proteinase inhibitor, reducing the activity of PAPPa.

### Tissue specificity

High levels of the proform in placenta and pregnancy serum; in placenta, localized to X cells of septa and anchoring villi. Lower levels in a variety of other tissues including kidney, myometrium, endometrium, ovaries, breast, prostate, bone marrow and colon.

### Sequence similarities

Contains 1 C-type lectin domain.

### Developmental stage

Levels of the proform increase in serum and placenta during pregnancy.

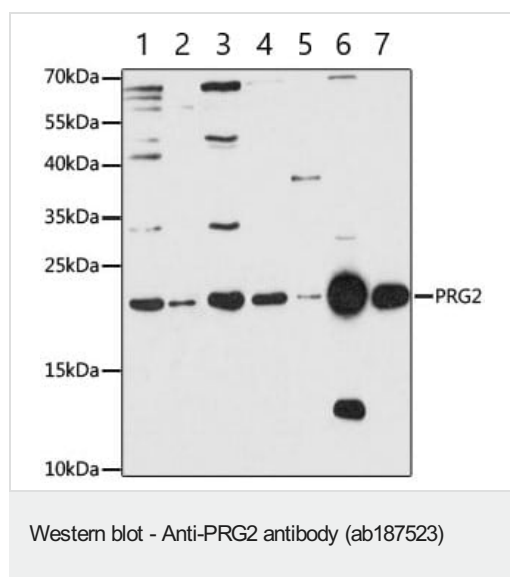
### Post-translational modifications

Nitrated.

### Cellular localization

Cytoplasmic vesicle > secretory vesicle. The proform is secreted. The mature protein is found in the matrix of the eosinophil's large specific granule and Secreted. The proform is secreted.

## Images



**All lanes** : Anti-PRG2 antibody (ab187523) at 1/1000 dilution

**Lane 1** : L-02 (human adenocarcinoma cell line) cell lysate

**Lane 2** : Jurkat (human T cell leukemia cell line from peripheral blood) cell lysate

**Lane 3** : K562 (human chronic myelogenous leukemia cell line from bone marrow) cell lysate

**Lane 4** : THP-1 (human monocytic leukemia cell line) cell lysate

**Lane 5** : HL-60 (human promyelocytic leukemia cell line) cell lysate

**Lane 6** : Mouse liver tissue lysate

**Lane 7** : Mouse spleen tissue lysate

Lysates/proteins at 25 µg per lane.

### Secondary

**All lanes** : HRP Goat Anti-Rabbit IgG (H+L) at 1/10000 dilution

Developed using the ECL technique.

**Predicted band size:** 25 kDa

**Observed band size:** 23 kDa

**Exposure time:** 1 second

**Blocking/Diluting buffer:** 3% NFD/MTBST

**Please note:** All products are "FOR RESEARCH USE ONLY. NOT FOR USE IN DIAGNOSTIC PROCEDURES"

### **Our Abpromise to you: Quality guaranteed and expert technical support**

---

- Replacement or refund for products not performing as stated on the datasheet
- Valid for 12 months from date of delivery
- Response to your inquiry within 24 hours
- We provide support in Chinese, English, French, German, Japanese and Spanish
- Extensive multi-media technical resources to help you
- We investigate all quality concerns to ensure our products perform to the highest standards

If the product does not perform as described on this datasheet, we will offer a refund or replacement. For full details of the Abpromise, please visit <https://www.abcam.com/abpromise> or contact our technical team.

### **Terms and conditions**

---

- Guarantee only valid for products bought direct from Abcam or one of our authorized distributors