


Product datasheet

Anti-PRKACG antibody [EP2647Y] α b108385

RabMAb

★★★★★ [1 Abreviews](#) [7 References](#) [1 Image](#)

Overview

Product name	Anti-PRKACG antibody [EP2647Y]
Description	Rabbit monoclonal [EP2647Y] to PRKACG
Host species	Rabbit
Specificity	This antibody is likely to react with the alpha subunit, as it possesses 85.7% similar homology with the immunogen. Additionally, it may react with the beta subunit, possessing 78.6% homology.
Tested applications	Suitable for: WB Unsuitable for: ICC/IF or IHC-P
Species reactivity	Reacts with: Human Predicted to work with: Mouse, Rat 
Immunogen	Synthetic peptide. This information is proprietary to Abcam and/or its suppliers.
Positive control	HeLa, MCF7, PC3 and A549 cell lysates
General notes	<p>Our RabMAb[®] technology is a patented hybridoma-based technology for making rabbit monoclonal antibodies. For details on our patents, please refer to RabMAb[®] patents.</p> <p>The Life Science industry has been in the grips of a reproducibility crisis for a number of years. Abcam is leading the way in addressing this with our range of recombinant monoclonal antibodies and knockout edited cell lines for gold-standard validation. Please check that this product meets your needs before purchasing.</p> <p>If you have any questions, special requirements or concerns, please send us an inquiry and/or contact our Support team ahead of purchase. Recommended alternatives for this product can be found below, along with publications, customer reviews and Q&As</p>

Properties

Form	Liquid
Storage instructions	Shipped at 4°C. Store at -20°C. Stable for 12 months at -20°C.
Storage buffer	<p>pH: 7.20</p> <p>Preservative: 0.05% Sodium azide</p> <p>Constituents: 0.1% BSA, 40% Glycerol (glycerin, glycerine), 9.85% Tris glycine, 50% Tissue culture supernatant</p>

Purity	Tissue culture supernatant
Clonality	Monoclonal
Clone number	EP2647Y
Isotype	IgG

Applications

The Abpromise guarantee Our **Abpromise guarantee** covers the use of ab108385 in the following tested applications. The application notes include recommended starting dilutions; optimal dilutions/concentrations should be determined by the end user.

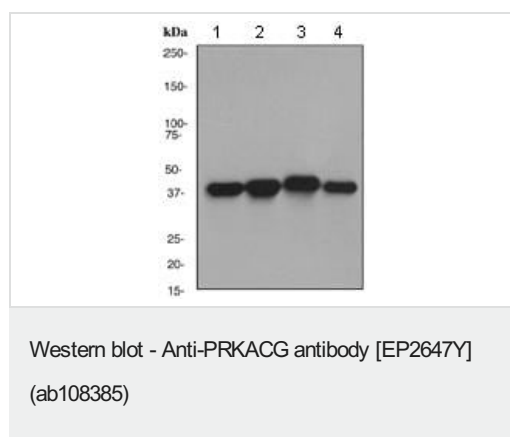
Application	Abreviews	Notes
WB	★★★★★ (1)	1/50000 - 1/200000. Detects a band of approximately 40 kDa (predicted molecular weight: 40 kDa).

Application notes Is unsuitable for ICC/IF or IHC-P.

Target

Function	Phosphorylates a large number of substrates in the cytoplasm and the nucleus.
Tissue specificity	Testis specific. But important tissues such as brain and ovary have not been analyzed for the content of transcript.
Sequence similarities	Belongs to the protein kinase superfamily. AGC Ser/Thr protein kinase family. cAMP subfamily. Contains 1 AGC-kinase C-terminal domain. Contains 1 protein kinase domain.

Images



All lanes : Anti-PRKACG antibody [EP2647Y] (ab108385) at 1/50000 dilution

- Lane 1 :** HeLa cell lysate
- Lane 2 :** MCF7 cell lysate
- Lane 3 :** PC3 cell lysate
- Lane 4 :** A549 cell lysate

Lysates/proteins at 10 µg per lane.

Predicted band size: 40 kDa
Observed band size: 40 kDa

Please note: All products are "FOR RESEARCH USE ONLY. NOT FOR USE IN DIAGNOSTIC PROCEDURES"

Our Abpromise to you: Quality guaranteed and expert technical support

- Replacement or refund for products not performing as stated on the datasheet
- Valid for 12 months from date of delivery
- Response to your inquiry within 24 hours

- We provide support in Chinese, English, French, German, Japanese and Spanish
- Extensive multi-media technical resources to help you
- We investigate all quality concerns to ensure our products perform to the highest standards

If the product does not perform as described on this datasheet, we will offer a refund or replacement. For full details of the Abpromise, please visit <https://www.abcam.com/abpromise> or contact our technical team.

Terms and conditions

- Guarantee only valid for products bought direct from Abcam or one of our authorized distributors