


Product datasheet

Anti-pro Caspase-10 antibody [E35] ab32155

RabMAb[®]

[4 References](#) [4 Images](#)

Overview

Product name	Anti-pro Caspase-10 antibody [E35]
Description	Rabbit monoclonal [E35] to pro Caspase-10
Host species	Rabbit
Specificity	The antibody does not crossreact with other Caspase family members.
Tested applications	Suitable for: ICC/IF, WB, IHC-P, Flow Cyt (Intra)
Species reactivity	Reacts with: Human Predicted to work with: Mouse 
Immunogen	Synthetic peptide within Human pro Caspase-10 aa 200-300 (N terminal). The exact sequence is proprietary.
Positive control	WB: Hela cell lysate. ICC/IF and FACS: Hela cells. IHC-P: Human breast carcinoma tissue.
General notes	<p>Our RabMAb[®] technology is a patented hybridoma-based technology for making rabbit monoclonal antibodies. For details on our patents, please refer to RabMAb[®] patents.</p> <p>The Life Science industry has been in the grips of a reproducibility crisis for a number of years. Abcam is leading the way in addressing this with our range of recombinant monoclonal antibodies and knockout edited cell lines for gold-standard validation. Please check that this product meets your needs before purchasing.</p> <p>If you have any questions, special requirements or concerns, please send us an inquiry and/or contact our Support team ahead of purchase. Recommended alternatives for this product can be found below, along with publications, customer reviews and Q&As</p> <p>Rat: We have preliminary internal testing data to indicate this antibody may not react with this species. Please contact us for more information.</p>

Properties

Form	Liquid
Storage instructions	Shipped at 4°C. Upon delivery aliquot and store at -20°C. Avoid freeze / thaw cycles.
Storage buffer	<p>pH: 7.20</p> <p>Preservative: 0.01% Sodium azide</p> <p>Constituents: 49% PBS, 50% Glycerol (glycerin, glycerine), 0.05% BSA</p>

Clonality	Monoclonal
Clone number	E35
Isotype	IgG

Applications

The Abpromise guarantee Our **Abpromise guarantee** covers the use of ab32155 in the following tested applications.

The application notes include recommended starting dilutions; optimal dilutions/concentrations should be determined by the end user.

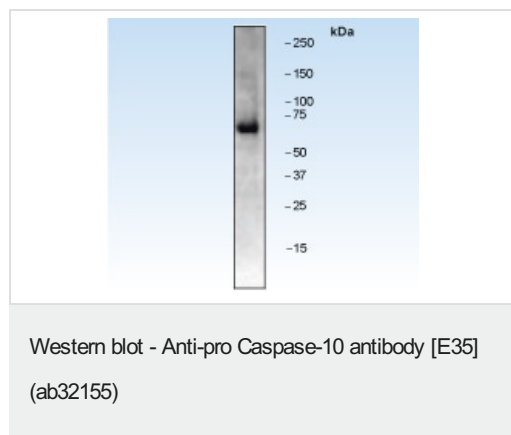
Application	Abreviews	Notes
ICC/IF		1/100.
WB		1/1000. Detects a band of approximately 65 kDa (predicted molecular weight: 59 kDa).
IHC-P		Use at an assay dependent concentration. Perform heat mediated antigen retrieval with citrate buffer pH 6 before commencing with IHC staining protocol.
Flow Cyt (Intra)		1/50. ab172730 - Rabbit monoclonal IgG, is suitable for use as an isotype control with this antibody.

Target

Relevance

Caspases are a family of cytosolic aspartate specific cysteine proteases involved in the initiation and execution of apoptosis. Caspase 10 (MCH4, FLICE2) is one of the initiator caspases, and is localized to various tissues. Pro Caspase 10 has two death effector domains (DEDs) that bind FADD and recruits both TNFR1 and CD95 to form complexes with these receptors and induce apoptosis. This death domain complex cleaves pro Caspase 10 into a large active fragment and a small fragment. Cleaved Caspase 10 leads to the processing of Caspase 3 and Caspase 7, initiating a caspase cascade and subsequent apoptosis.

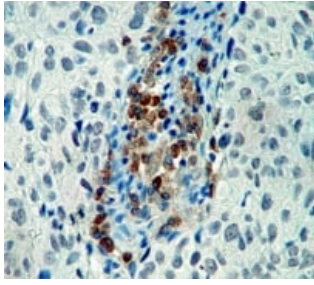
Images



Anti-pro Caspase-10 antibody [E35] (ab32155) at 1/1000 dilution +
Hela cell lysate

Predicted band size: 59 kDa

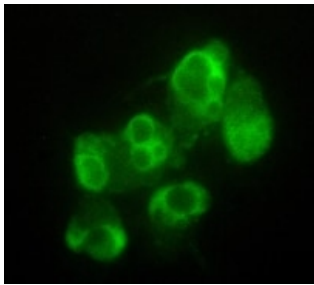
Observed band size: 65 kDa



Immunohistochemistry (Formalin/PFA-fixed paraffin-embedded sections) - Anti-pro Caspase-10 antibody [E35] (ab32155)

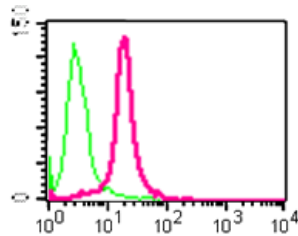
Ab32155, at 1/50 dilution, staining pro Caspase 10 in paraffin embedded human breast carcinoma tissue by Immunohistochemistry.

Perform heat mediated antigen retrieval with citrate buffer pH 6 before commencing with IHC staining protocol.



Immunocytochemistry/ Immunofluorescence - Anti-pro Caspase-10 antibody [E35] (ab32155)

Ab32155, at 1/100 dilution, staining pro Caspase 10 in apoptotic HeLa cells by Immunofluorescence.



Flow Cytometry (Intracellular) - Anti-pro Caspase-10 antibody [E35] (ab32155)

Intracellular flow cytometric analysis of permeabilized HeLa cells using ab32155 at a 1/50 dilution (red) or a rabbit IgG (negative) (green).

Please note: All products are "FOR RESEARCH USE ONLY. NOT FOR USE IN DIAGNOSTIC PROCEDURES"

Our Promise to you: Quality guaranteed and expert technical support

- Replacement or refund for products not performing as stated on the datasheet
- Valid for 12 months from date of delivery
- Response to your inquiry within 24 hours
- We provide support in Chinese, English, French, German, Japanese and Spanish
- Extensive multi-media technical resources to help you
- We investigate all quality concerns to ensure our products perform to the highest standards

If the product does not perform as described on this datasheet, we will offer a refund or replacement. For full details of the Abpromise, please visit <https://www.abcam.com/abpromise> or contact our technical team.

Terms and conditions

- Guarantee only valid for products bought direct from Abcam or one of our authorized distributors