

Product datasheet

Anti-pro Caspase-12 antibody ab8117

[6 References](#) [3 Images](#)

Overview

Product name	Anti-pro Caspase-12 antibody
Description	Rabbit polyclonal to pro Caspase-12
Host species	Rabbit
Specificity	The antibody only recognizes the prodomain, not the activated form.
Tested applications	Suitable for: IHC-P, ICC/IF, WB
Species reactivity	Reacts with: Mouse
Immunogen	Synthetic peptide corresponding to Mouse pro Caspase-12 aa 100-116. Sequence: CTPSSPSESKRKVEDDE Database link: Q6UXS9 (Peptide available as ab8374)

 [Run BLAST with](#)

 [Run BLAST with](#)

General notes

The Life Science industry has been in the grips of a reproducibility crisis for a number of years. Abcam is leading the way in addressing this with our range of recombinant monoclonal antibodies and knockout edited cell lines for gold-standard validation. Please check that this product meets your needs before purchasing.

If you have any questions, special requirements or concerns, please send us an inquiry and/or contact our Support team ahead of purchase. Recommended alternatives for this product can be found below, along with publications, customer reviews and Q&As

Properties

Form	Liquid
Storage instructions	Shipped at 4°C. Store at +4°C. Do Not Freeze.
Storage buffer	pH: 7.2 Preservative: 0.02% Sodium azide
Purity	Affinity purified
Clonality	Polyclonal
Isotype	IgG

Applications

The Abpromise guarantee

Our **Abpromise guarantee** covers the use of ab8117 in the following tested applications.

The application notes include recommended starting dilutions; optimal dilutions/concentrations should be determined by the end user.

Application	Abreviews	Notes
IHC-P		Use a concentration of 2 µg/ml.
ICC/IF		Use a concentration of 20 µg/ml.
WB		Use a concentration of 0.5 - 1 µg/ml. Detects a band of approximately 55 kDa.

Target

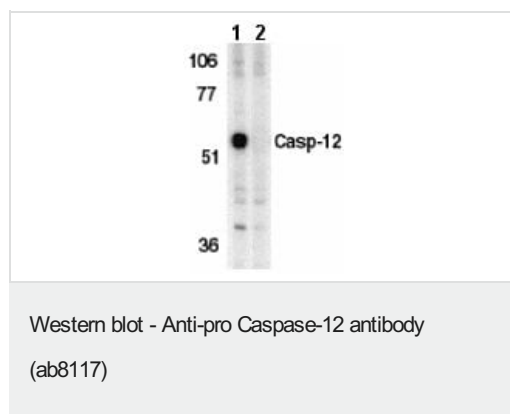
Relevance

Caspase 12 is activated by ER stress, including disruption of ER calcium homeostasis and mediates ER stress-induced apoptosis. Caspase 12 is co-localized to the ER with several proteins that are involved in Alzheimers disease including gamma-secretase presenilin and beta-amyloid precursor protein (APP). Caspase 12 mediates cytotoxicity induced by amyloid-beta. It is ubiquitously expressed in mouse tissue.

Cellular localization

Endoplasmic reticulum

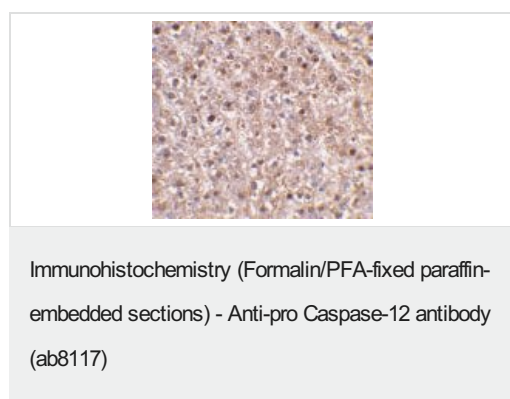
Images



All lanes : Anti-pro Caspase-12 antibody (ab8117) at 1 µg/ml

Lane 1 : Murine brain tissue lysate with absence of blocking peptide

Lane 2 : Murine brain tissue lysate with presence of blocking peptide



ab8117 staining Caspase-12 in mouse liver tissue by IHC

Immunocytochemistry/ Immunofluorescence - Anti-pro Caspase-12 antibody (ab8117)

Immunofluorescence of Caspase-12 in Mouse Liver cells using ab8117 at 10 ug/ml.

Please note: All products are "FOR RESEARCH USE ONLY. NOT FOR USE IN DIAGNOSTIC PROCEDURES"

Our Abpromise to you: Quality guaranteed and expert technical support

- Replacement or refund for products not performing as stated on the datasheet
- Valid for 12 months from date of delivery
- Response to your inquiry within 24 hours
- We provide support in Chinese, English, French, German, Japanese and Spanish
- Extensive multi-media technical resources to help you
- We investigate all quality concerns to ensure our products perform to the highest standards

If the product does not perform as described on this datasheet, we will offer a refund or replacement. For full details of the Abpromise, please visit <https://www.abcam.com/abpromise> or contact our technical team.

Terms and conditions

- Guarantee only valid for products bought direct from Abcam or one of our authorized distributors