

Product datasheet

Anti-pro Caspase-12 antibody ab8118

[5 References](#) [2 Images](#)

Overview

Product name	Anti-pro Caspase-12 antibody
Description	Rabbit polyclonal to pro Caspase-12
Host species	Rabbit
Specificity	The antibody only recognizes the prodomain, not the activated form.
Tested applications	Suitable for: IHC-P, WB
Species reactivity	Reacts with: Mouse, Human
Immunogen	Synthetic peptide within Mouse pro Caspase-12 aa 1-100 (N terminal). The exact immunogen sequence used to generate this antibody is proprietary information. If additional detail on the immunogen is needed to determine the suitability of the antibody for your needs, please contact our Scientific Support team to discuss your requirements. Database link: O08736

 **[Run BLAST with](#)**

 **[Run BLAST with](#)**

General notes

The Life Science industry has been in the grips of a reproducibility crisis for a number of years. Abcam is leading the way in addressing this with our range of recombinant monoclonal antibodies and knockout edited cell lines for gold-standard validation. Please check that this product meets your needs before purchasing.

If you have any questions, special requirements or concerns, please send us an inquiry and/or contact our Support team ahead of purchase. Recommended alternatives for this product can be found below, along with publications, customer reviews and Q&As

Properties

Form	Liquid
Storage instructions	Shipped at 4°C. Upon delivery aliquot and store at -20°C or -80°C. Avoid repeated freeze / thaw cycles.
Storage buffer	pH: 7.2 Preservative: 0.02% Sodium azide
Purity	Affinity purified
Clonality	Polyclonal
Isotype	IgG

Applications

The Abpromise guarantee

Our **Abpromise guarantee** covers the use of ab8118 in the following tested applications.

The application notes include recommended starting dilutions; optimal dilutions/concentrations should be determined by the end user.

Application	Abreviews	Notes
IHC-P		Use a concentration of 10 µg/ml.
WB		Use a concentration of 0.5 - 1 µg/ml. Detects a band of approximately 55 kDa.

Target

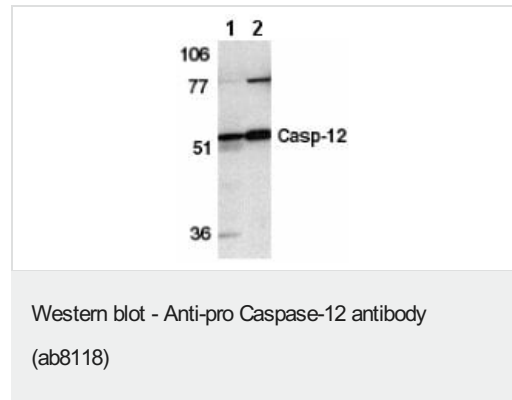
Relevance

Caspase 12 is activated by ER stress, including disruption of ER calcium homeostasis and mediates ER stress-induced apoptosis. Caspase 12 is co-localized to the ER with several proteins that are involved in Alzheimers disease including gamma-secretase presenilin and beta-amyloid precursor protein (APP). Caspase 12 mediates cytotoxicity induced by amyloid-beta. It is ubiquitously expressed in mouse tissue.

Cellular localization

Endoplasmic reticulum

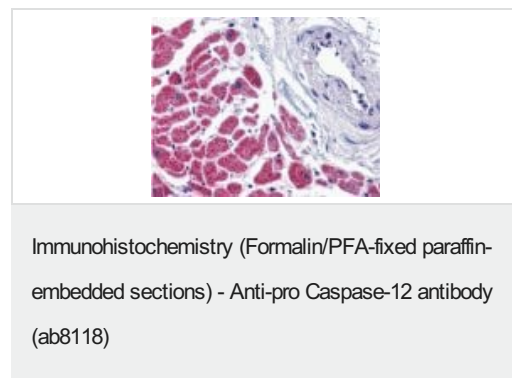
Images



All lanes : Anti-pro Caspase-12 antibody (ab8118) at 1 µg/ml

Lane 1 : Human spleen tissue lysate

Lane 2 : Mouse spleen tissue lysate



ab8118 at 10µg/ml staining Caspase-12 in human heart tissue by IHC

Please note: All products are "FOR RESEARCH USE ONLY. NOT FOR USE IN DIAGNOSTIC PROCEDURES"

Our Abpromise to you: Quality guaranteed and expert technical support

- Replacement or refund for products not performing as stated on the datasheet
- Valid for 12 months from date of delivery
- Response to your inquiry within 24 hours

- We provide support in Chinese, English, French, German, Japanese and Spanish
- Extensive multi-media technical resources to help you
- We investigate all quality concerns to ensure our products perform to the highest standards

If the product does not perform as described on this datasheet, we will offer a refund or replacement. For full details of the Abpromise, please visit <https://www.abcam.com/abpromise> or contact our technical team.

Terms and conditions

- Guarantee only valid for products bought direct from Abcam or one of our authorized distributors