



Product datasheet

Anti-Profilin 1 antibody - Carboxyterminal end ab50667

★★★★★ [4 Abreviews](#) [13 References](#) [1 Image](#)

Overview

Product name	Anti-Profilin 1 antibody - Carboxyterminal end
Description	Rabbit polyclonal to Profilin 1 - Carboxyterminal end
Host species	Rabbit
Tested applications	Suitable for: IP
Species reactivity	Reacts with: Mouse
Immunogen	Synthetic peptide: CYEMASHLRRSQY conjugated to KLH, corresponding to C terminal amino acids 128-140 of Human Profilin 1  Run BLAST with  Run BLAST with

General notes

The Life Science industry has been in the grips of a reproducibility crisis for a number of years. Abcam is leading the way in addressing this with our range of recombinant monoclonal antibodies and knockout edited cell lines for gold-standard validation. Please check that this product meets your needs before purchasing.

If you have any questions, special requirements or concerns, please send us an inquiry and/or contact our Support team ahead of purchase. Recommended alternatives for this product can be found below, along with publications, customer reviews and Q&As

Properties

Form	Liquid
Storage instructions	Shipped at 4°C. Store at +4°C short term (1-2 weeks). Upon delivery aliquot. Store at -20°C or -80°C. Avoid freeze / thaw cycle.
Storage buffer	pH: 7.40 Preservative: 0.097% Sodium azide Constituent: 0.0268% PBS
Purity	Immunogen affinity purified
Clonality	Polyclonal
Isotype	IgG

Applications

The Abpromise guarantee

Our **Abpromise guarantee** covers the use of ab50667 in the following tested applications.

The application notes include recommended starting dilutions; optimal dilutions/concentrations should be determined by the end user.

Application	Abreviews	Notes
IP		Use at an assay dependent concentration.

Target

Function

Binds to actin and affects the structure of the cytoskeleton. At high concentrations, profilin prevents the polymerization of actin, whereas it enhances it at low concentrations. By binding to PIP2, it inhibits the formation of IP3 and DG.

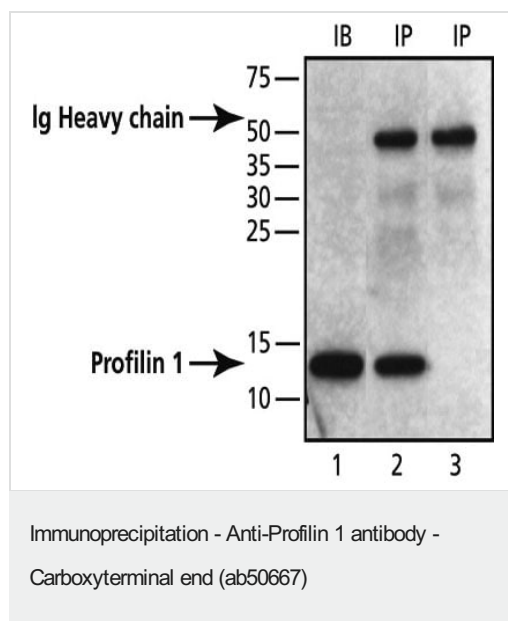
Sequence similarities

Belongs to the profilin family.

Cellular localization

Cytoplasm > cytoskeleton.

Images



Lane 1: Positive control — Western blot: ab50667 at a concentration of 1 µg/ml on whole extract of Mouse 3T3 cells at 10 µg/ml.

Lane 2: Immunoprecipitation — 10 µg of ab50667 was used to immunoprecipitate Mouse Profilin 1 from 3T3 cell lysate (20 µg/ml). Detection antibody: Rabbit Anti-Profilin 1 (N-terminal) antibody.

Lane 3: Negative control — non-relevant antibody was used for IP. Detection antibody: Rabbit Anti-Profilin 1 (N-terminal) antibody

Please note: All products are "FOR RESEARCH USE ONLY. NOT FOR USE IN DIAGNOSTIC PROCEDURES"

Our Abpromise to you: Quality guaranteed and expert technical support

- Replacement or refund for products not performing as stated on the datasheet
- Valid for 12 months from date of delivery
- Response to your inquiry within 24 hours
- We provide support in Chinese, English, French, German, Japanese and Spanish
- Extensive multi-media technical resources to help you
- We investigate all quality concerns to ensure our products perform to the highest standards

If the product does not perform as described on this datasheet, we will offer a refund or replacement. For full details of the Abpromise, please visit <https://www.abcam.com/abpromise> or contact our technical team.

Terms and conditions

- Guarantee only valid for products bought direct from Abcam or one of our authorized distributors