


## Product datasheet

# Anti-Profilin 1 antibody [EPR6303] ab133529

**KO VALIDATED** Recombinant RabMAB

[3 References](#) [4 Images](#)

### Overview

<b>Product name</b>	Anti-Profilin 1 antibody [EPR6303]
<b>Description</b>	Rabbit monoclonal [EPR6303] to Profilin 1
<b>Host species</b>	Rabbit
<b>Tested applications</b>	<b>Suitable for:</b> WB, IHC-P <b>Unsuitable for:</b> Flow Cyt, ICC/IF or IP
<b>Species reactivity</b>	<b>Reacts with:</b> Mouse, Human <b>Predicted to work with:</b> Rat 
<b>Immunogen</b>	Synthetic peptide. This information is proprietary to Abcam and/or its suppliers.
<b>Positive control</b>	Jurkat, JAR, HepG2, and 293T cell lysates; and Human kidney tissue.
<b>General notes</b>	This product is a recombinant monoclonal antibody, which offers several advantages including: <ul style="list-style-type: none"> <li>- High batch-to-batch consistency and reproducibility</li> <li>- Improved sensitivity and specificity</li> <li>- Long-term security of supply</li> <li>- Animal-free production</li> </ul> For more information <a href="#">see here</a> . Our RabMAB <sup>®</sup> technology is a patented hybridoma-based technology for making rabbit monoclonal antibodies. For details on our patents, please refer to <a href="#">RabMAB<sup>®</sup> patents</a> .

### Properties

<b>Form</b>	Liquid
<b>Storage instructions</b>	Shipped at 4°C. Store at -20°C. Stable for 12 months at -20°C.
<b>Storage buffer</b>	pH: 7.2 Preservative: 0.05% Sodium azide Constituents: 40% Glycerol (glycerin, glycerine), 9.85% Tris glycine, 50% Tissue culture supernatant
<b>Purity</b>	Protein A purified
<b>Clonality</b>	Monoclonal
<b>Clone number</b>	EPR6303

Isotype IgG

## Applications

**The Abpromise guarantee** Our **Abpromise guarantee** covers the use of ab133529 in the following tested applications. The application notes include recommended starting dilutions; optimal dilutions/concentrations should be determined by the end user.

Application	Abreviews	Notes
WB		1/1000 - 1/10000. Predicted molecular weight: 12 kDa.
IHC-P		1/250 - 1/500. Perform heat mediated antigen retrieval with citrate buffer pH 6 before commencing with IHC staining protocol.

**Application notes** Is unsuitable for Flow Cyt, ICC/IF or IP.

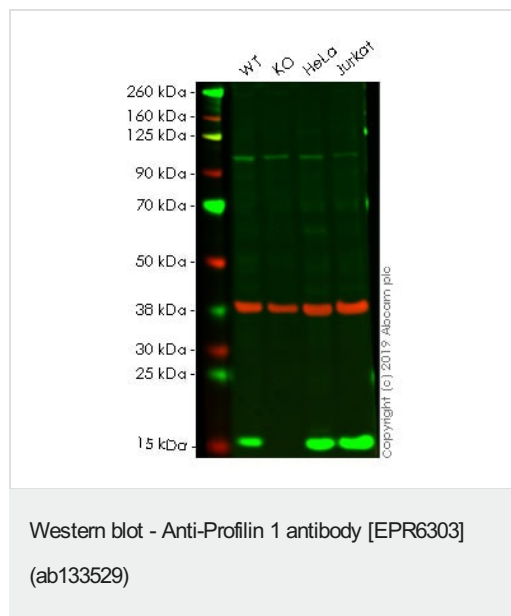
## Target

**Function** Binds to actin and affects the structure of the cytoskeleton. At high concentrations, profilin prevents the polymerization of actin, whereas it enhances it at low concentrations. By binding to PIP2, it inhibits the formation of IP3 and DG.

**Sequence similarities** Belongs to the profilin family.

**Cellular localization** Cytoplasm > cytoskeleton.

## Images



**All lanes** : Anti-Profilin 1 antibody [EPR6303] (ab133529) at 1/1000 dilution

**Lane 1** : Wild-type HAP1 whole cell lysate

**Lane 2** : PFN1 knockout HAP1 whole cell lysate

**Lane 3** : HeLa whole cell lysate

**Lane 4** : Jurkat whole cell lysate

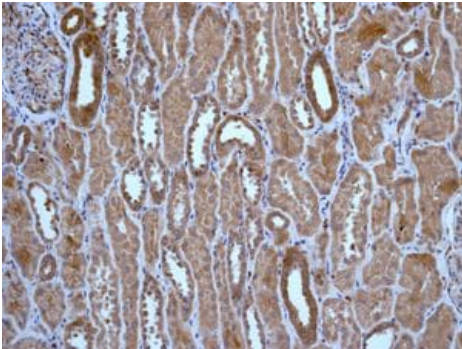
Lysates/proteins at 20 µg per lane.

**Predicted band size:** 12 kDa

**Lanes 1 - 4:** Merged signal (red and green). Green - ab133529 observed at 15 kDa. Red - loading control, **ab8245**, observed at 37 kDa.

ab133529 was shown to specifically react with in wild-type HAP1

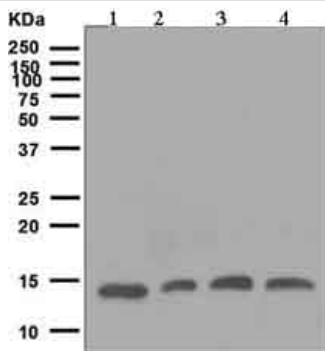
cells as signal was lost in PFN1 knockout cells. Wild-type and PFN1 knockout samples were subjected to SDS-PAGE. The membrane was blocked with 3% NF Milk. Ab133529 and **ab8245** (Mouse anti-GAPDH loading control) were incubated overnight at 4°C at 1/1000 dilution and 1/20000 dilution respectively. Blots were developed with Goat anti-Rabbit IgG H&L (IRDye® 800CW) preabsorbed **ab216773** and Goat anti-Mouse IgG H&L (IRDye® 680RD) preabsorbed **ab216776** secondary antibodies at 1/20000 dilution for 1 hour at room temperature before imaging.



Immunohistochemistry (Formalin/PFA-fixed paraffin-embedded sections) - Anti-Profilin 1 antibody [EPR6303] (ab133529)

Immunohistochemistry analysis of Paraffin Embedded Human kidney tissue labelling Profilin 1 with ab133529 at 1/250.

Perform heat mediated antigen retrieval with citrate buffer pH 6 before commencing with IHC staining protocol.



Western blot - Anti-Profilin 1 antibody [EPR6303] (ab133529)

**All lanes** : Anti-Profilin 1 antibody [EPR6303] (ab133529) at 1/1000 dilution

**Lane 1** : Jurkat cell lysate

**Lane 2** : JAR cell lysate

**Lane 3** : HepG2 cell lysate

**Lane 4** : 293T cell lysate

Lysates/proteins at 10 µg per lane.

**Predicted band size:** 12 kDa

### Why choose a recombinant antibody?



**Research with confidence**  
Consistent and reproducible results



**Long-term and scalable supply**  
Recombinant technology



**Success from the first experiment**  
Confirmed specificity



**Ethical standards compliant**  
Animal-free production

Anti-Profilin 1 antibody [EPR6303] (ab133529)

**Please note:** All products are "FOR RESEARCH USE ONLY. NOT FOR USE IN DIAGNOSTIC PROCEDURES"

### Our Abpromise to you: Quality guaranteed and expert technical support

---

- Replacement or refund for products not performing as stated on the datasheet
- Valid for 12 months from date of delivery
- Response to your inquiry within 24 hours
- We provide support in Chinese, English, French, German, Japanese and Spanish
- Extensive multi-media technical resources to help you
- We investigate all quality concerns to ensure our products perform to the highest standards

If the product does not perform as described on this datasheet, we will offer a refund or replacement. For full details of the Abpromise, please visit <https://www.abcam.com/abpromise> or contact our technical team.

### Terms and conditions

---

- Guarantee only valid for products bought direct from Abcam or one of our authorized distributors