

Product datasheet

Anti-Prol1 antibody ab204562

1 Image

Overview

Product name	Anti-Prol1 antibody
Description	Rabbit polyclonal to Prol1
Host species	Rabbit
Tested applications	Suitable for: IHC-P
Species reactivity	Reacts with: Human
Immunogen	Recombinant fragment corresponding to Human Prol1 aa 150 to the C-terminus. Database link: Q99935 Run BLAST with Run BLAST with
Positive control	Human salivary gland tissue.
General notes	<p>The Life Science industry has been in the grips of a reproducibility crisis for a number of years. Abcam is leading the way in addressing this with our range of recombinant monoclonal antibodies and knockout edited cell lines for gold-standard validation. Please check that this product meets your needs before purchasing.</p> <p>If you have any questions, special requirements or concerns, please send us an inquiry and/or contact our Support team ahead of purchase. Recommended alternatives for this product can be found below, along with publications, customer reviews and Q&As</p>

Properties

Form	Liquid
Storage instructions	Shipped at 4°C. Store at +4°C short term (1-2 weeks). Upon delivery aliquot. Store at -20°C long term. Avoid freeze / thaw cycle.
Storage buffer	pH: 7.20 Preservative: 0.02% Sodium azide Constituents: 59% PBS, 40% Glycerol (glycerin, glycerine)
Purity	Immunogen affinity purified
Clonality	Polyclonal
Isotype	IgG

Applications

The Abpromise guarantee

Our **Abpromise guarantee** covers the use of ab204562 in the following tested applications.

The application notes include recommended starting dilutions; optimal dilutions/concentrations should be determined by the end user.

Application	Abreviews	Notes
IHC-P		1/200 - 1/500. Perform heat mediated antigen retrieval with citrate buffer pH 6 before commencing with IHC staining protocol.

Target

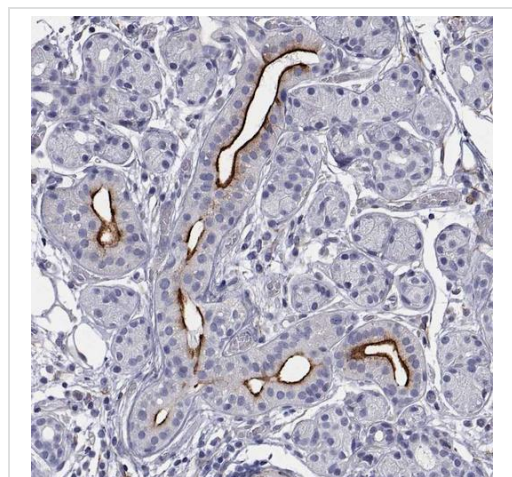
Relevance

Opiorphin is an endogenous inhibitor of neprilysin and aminopeptidase N. Inhibits the breakdown of substance P, Mca-BK2 and Met-enkephalin by neprilysin in vitro with IC50 values of 29 μ M, 33 μ M and 33 μ M respectively. Inhibits the breakdown of Ala-pNA by aminopeptidase N in vitro with an IC50 of 65 μ M. Has a potent analgesic effect when administered to rats by intravenous injection.

Cellular localization

Secreted

Images



Immunohistochemical analysis of formalin-fixed paraffin-embedded Human salivary gland tissue labeling Prol1 with ab204562 at 1/200.

Immunohistochemistry (Formalin/PFA-fixed paraffin-embedded sections) - Anti-Prol1 antibody (ab204562)

Please note: All products are "FOR RESEARCH USE ONLY. NOT FOR USE IN DIAGNOSTIC PROCEDURES"

Our Abpromise to you: Quality guaranteed and expert technical support

- Replacement or refund for products not performing as stated on the datasheet
- Valid for 12 months from date of delivery
- Response to your inquiry within 24 hours
- We provide support in Chinese, English, French, German, Japanese and Spanish

- Extensive multi-media technical resources to help you
- We investigate all quality concerns to ensure our products perform to the highest standards

If the product does not perform as described on this datasheet, we will offer a refund or replacement. For full details of the Abpromise, please visit <https://www.abcam.com/abpromise> or contact our technical team.

Terms and conditions

- Guarantee only valid for products bought direct from Abcam or one of our authorized distributors