

Product datasheet

Anti-Prolactin Receptor/PRL-R antibody [B6.2 + PRLR742] - BSA and Azide free ab269737

1 Image

Overview

Product name	Anti-Prolactin Receptor/PRL-R antibody [B6.2 + PRLR742] - BSA and Azide free
Description	Mouse monoclonal [B6.2 + PRLR742] to Prolactin Receptor/PRL-R - BSA and Azide free
Host species	Mouse
Tested applications	Suitable for: IHC-P
Species reactivity	Reacts with: Human
Immunogen	This product was produced with the following immunogens: Recombinant full length protein corresponding to Human Prolactin Receptor/PRL-R. (PRLR742) Database link: P16471 Recombinant full length protein corresponding to Human Prolactin Receptor/PRL-R. Semi-purified. (B6.2) Database link: P16471
Positive control	IHC-P: Human testicular carcinoma tissue.
General notes	ab269737 is the carrier free version of ab199015 . Our carrier-free antibodies are typically supplied in a PBS-only formulation, purified and free of BSA, sodium azide and glycerol. The carrier-free buffer and high concentration allow for increased conjugation efficiency. This conjugation-ready format is designed for use with fluorochromes, metal isotopes, oligonucleotides, and enzymes, which makes them ideal for antibody labelling, functional and cell-based assays, flow-based assays (e.g. mass cytometry) and Multiplex Imaging applications. Use our conjugation kits for antibody conjugates that are ready-to-use in as little as 20 minutes with <1 minute hands-on-time and 100% antibody recovery: available for fluorescent dyes, HRP, biotin and gold. The Life Science industry has been in the grips of a reproducibility crisis for a number of years. Abcam is leading the way in addressing this with our range of recombinant monoclonal antibodies and knockout edited cell lines for gold-standard validation. Please check that this product meets your needs before purchasing. If you have any questions, special requirements or concerns, please send us an inquiry and/or contact our Support team ahead of purchase. Recommended alternatives for this product can be found below, along with publications, customer reviews and Q&As

Please note that this antibody is an oligoclonal antibody. It is a cocktail of monoclonal antibodies that have been carefully selected. Oligoclonal antibodies have not only the specificity and batch-to-batch consistency of a monoclonal antibody, but also have the advantage of the sensitivity of a polyclonal antibody due to their ability to recognize multiple epitopes on an antigen.

Properties

Form	Liquid
Storage instructions	Shipped at 4°C. Store at +4°C short term (1-2 weeks). Upon delivery aliquot. Store at -20°C long term. Avoid freeze / thaw cycle.
Storage buffer	pH: 7.2 Constituent: PBS
Carrier free	Yes
Purity	Protein G purified
Purification notes	ab19915 was purified from Bioreactor Concentrate.
Clonality	Monoclonal
Clone number	B6.2 + PRLR742
Isotype	IgG1
Light chain type	kappa

Applications

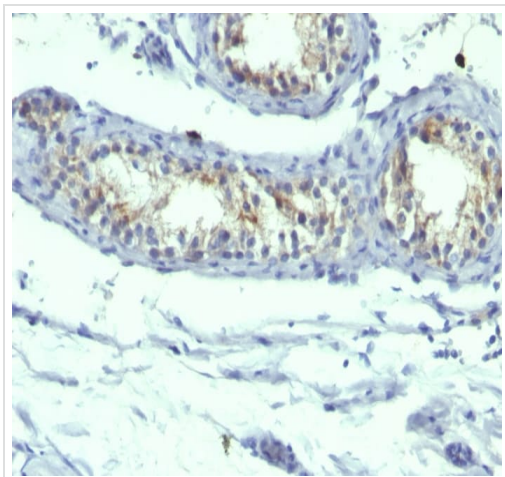
The Abpromise guarantee Our **Abpromise guarantee** covers the use of ab269737 in the following tested applications. The application notes include recommended starting dilutions; optimal dilutions/concentrations should be determined by the end user.

Application	Abreviews	Notes
IHC-P		Use a concentration of 0.5 - 1 µg/ml. Perform heat mediated antigen retrieval with citrate buffer pH 6 before commencing with IHC staining protocol. 30 minutes at RT.

Target

Function	This is a receptor for the anterior pituitary hormone prolactin (PRL). Isoform 4 is unable to transduce prolactin signaling. Isoform 6 is unable to transduce prolactin signaling.
Tissue specificity	Expressed in breast, placenta, kidney, liver and pancreas.
Sequence similarities	Belongs to the type I cytokine receptor family. Type 1 subfamily. Contains 2 fibronectin type-III domains.
Domain	The WSXWS motif appears to be necessary for proper protein folding and thereby efficient intracellular transport and cell-surface receptor binding. The box 1 motif is required for JAK interaction and/or activation.

Images



Immunohistochemistry (Formalin/PFA-fixed paraffin-embedded sections) - Anti-Prolactin Receptor/PRL-R antibody [B6.2 + PRLR742] - BSA and Azide free (ab269737)

Formalin-fixed, paraffin-embedded human Testicular Carcinoma tissue stained for Prolactin Receptor/PRL-R using **ab199015** at 2 µg/ml in immunohistochemical analysis.

This data was developed using the same antibody clone in a different buffer formulation containing PBS, BSA, glycerol, and sodium azide (**ab199015**).

Please note: All products are "FOR RESEARCH USE ONLY. NOT FOR USE IN DIAGNOSTIC PROCEDURES"

Our Abpromise to you: Quality guaranteed and expert technical support

- Replacement or refund for products not performing as stated on the datasheet
- Valid for 12 months from date of delivery
- Response to your inquiry within 24 hours
- We provide support in Chinese, English, French, German, Japanese and Spanish
- Extensive multi-media technical resources to help you
- We investigate all quality concerns to ensure our products perform to the highest standards

If the product does not perform as described on this datasheet, we will offer a refund or replacement. For full details of the Abpromise, please visit <https://www.abcam.com/abpromise> or contact our technical team.

Terms and conditions

- Guarantee only valid for products bought direct from Abcam or one of our authorized distributors