

Product datasheet

Anti-Prolactin/PRL antibody [EPR18018-31] ab188229

Recombinant RabMAb

[3 References](#) [6 Images](#)

Overview

Product name	Anti-Prolactin/PRL antibody [EPR18018-31]
Description	Rabbit monoclonal [EPR18018-31] to Prolactin/PRL
Host species	Rabbit
Tested applications	Suitable for: WB, IHC-P, IHC-Fr, IP
Species reactivity	Reacts with: Mouse, Rat Does not react with: Human
Immunogen	Recombinant fragment. This information is proprietary to Abcam and/or its suppliers.
Positive control	WB: mouse and rat pituitary tissue lysates. IHC-P: Mouse and rat pituitary tissues. IHC-Fr: Mouse pituitary tissue. IP: Mouse pituitary tissue lysate.
General notes	<p>This product is a recombinant monoclonal antibody, which offers several advantages including:</p> <ul style="list-style-type: none"> - High batch-to-batch consistency and reproducibility - Improved sensitivity and specificity - Long-term security of supply - Animal-free production <p>For more information see here.</p> <p>Our RabMAb[®] technology is a patented hybridoma-based technology for making rabbit monoclonal antibodies. For details on our patents, please refer to RabMAb[®] patents.</p>

Properties

Form	Liquid
Storage instructions	Shipped at 4°C. Store at +4°C short term (1-2 weeks). Upon delivery aliquot. Store at -20°C long term. Avoid freeze / thaw cycle.
Storage buffer	pH: 7.2 Preservative: 0.01% Sodium azide Constituents: 0.05% BSA, 40% Glycerol, PBS
Purity	Protein A purified
Clonality	Monoclonal
Clone number	EPR18018-31

Isotype

IgG

Applications

The Abpromise guarantee

Our **Abpromise guarantee** covers the use of ab188229 in the following tested applications.

The application notes include recommended starting dilutions; optimal dilutions/concentrations should be determined by the end user.

Application	Abreviews	Notes
WB		1/2000. Detects a band of approximately 23 kDa (predicted molecular weight: 25 kDa).
IHC-P		1/16000. Perform heat mediated antigen retrieval with Tris/EDTA buffer pH 9.0 before commencing with IHC staining protocol. This antibody is not suitable for human species in IHC application.
IHC-Fr		1/1000. Perform heat mediated antigen retrieval with 10 mM sodium citrate buffer pH 6.0 + 0.05% Tween-20 before commencing with IHC staining protocol. Under our IHC-Fr experimental conditions this antibody could not detect Prolactin on rat pituitary gland sample.
IP		1/30.

Target

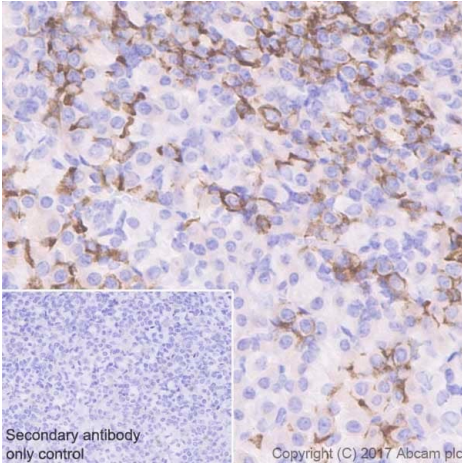
Relevance

Various hormones are secreted from the anterior pituitary during development and growth. Prolactin is a growth factor secreted by the anterior pituitary that is necessary for the proliferation and differentiation of the mammary glands.

Cellular localization

Secreted

Images

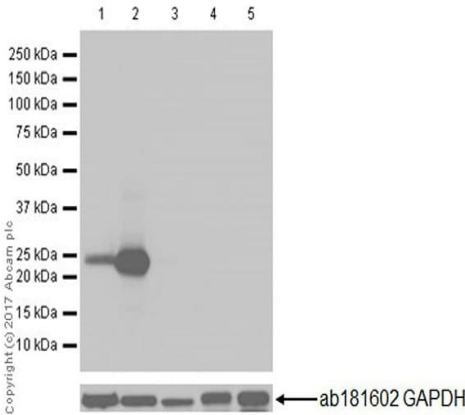


Immunohistochemistry (Formalin/PFA-fixed paraffin-embedded sections) - Anti-Prolactin/PRL antibody [EPR18018-31] (ab188229)

Immunohistochemical analysis of paraffin-embedded mouse pituitary tissue labeling Prolactin/PRL with ab188229 at 1/16000 dilution, followed by Goat Anti-Rabbit IgG H&L (HRP) Ready to use. Cytoplasmic staining on mouse pituitary (PMID: 24514953). Counter stained with hematoxylin.

Secondary antibody only control: Used PBS instead of primary antibody, secondary antibody is Goat Anti-Rabbit IgG H&L (HRP) Ready to use.

Perform heat mediated antigen retrieval with Tris/EDTA buffer pH 9.0 before commencing with IHC staining protocol.



Western blot - Anti-Prolactin/PRL antibody [EPR18018-31] (ab188229)

All lanes : Anti-Prolactin/PRL antibody [EPR18018-31] (ab188229) at 1/5000 dilution

Lane 1 : Rat pituitary tissue lysate

Lane 2 : Mouse pituitary tissue lysate

Lane 3 : Mouse kidney tissue lysate

Lane 4 : Rat heart tissue lysate

Lane 5 : C6 (rat glial tumor cell line) whole cell lysate

Lysates/proteins at 20 µg per lane.

Secondary

All lanes : Goat Anti-Rabbit IgG H&L (HRP) (**ab97051**) at 1/100000 dilution

Developed using the ECL technique.

Predicted band size: 25 kDa

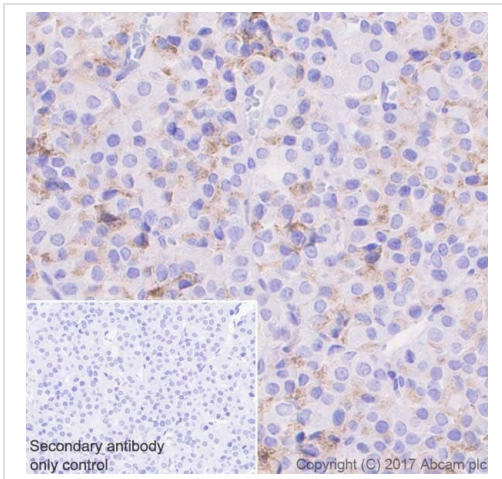
Observed band size: 23 kDa

Exposure time: 5 seconds

Blocking/Dilution buffer: 5% NFD/MTBST

Prolactin expression is generally restricted to the anterior pituitary gland (PMID: 1697858).

Negative control: Mouse kidney, rat heart and C6 cells.

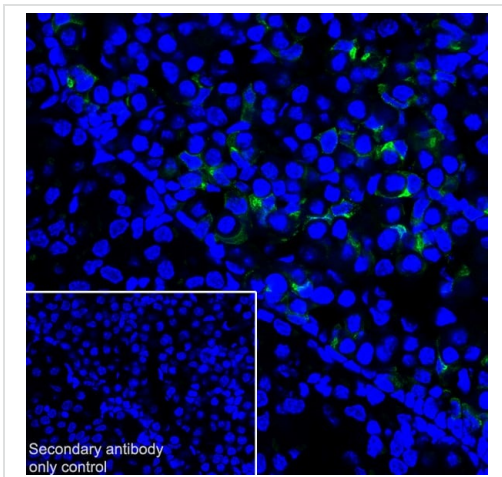


Immunohistochemistry (Formalin/PFA-fixed paraffin-embedded sections) - Anti-Prolactin/PRL antibody [EPR18018-31] (ab188229)

Immunohistochemical analysis of paraffin-embedded rat pituitary tissue labeling Prolactin/PRL with ab188229 at 1/16000 dilution, followed by Goat Anti-Rabbit IgG H&L (HRP) Ready to use. Cytoplasmic staining on rat pituitary (PMID: 24514953). Counter stained with hematoxylin.

Secondary antibody only control: Used PBS instead of primary antibody, secondary antibody is Goat Anti-Rabbit IgG H&L (HRP) Ready to use.

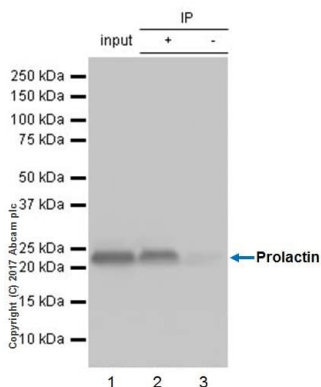
Perform heat mediated antigen retrieval with Tris/EDTA buffer pH 9.0 before commencing with IHC staining protocol.



Immunohistochemistry (Frozen sections) - Anti-Prolactin/PRL antibody [EPR18018-31] (ab188229)

Immunohistochemical analysis of 4% PFA-fixed, 0.2% Triton X-100 permeabilized mouse pituitary tissue labeling Prolactin/PRL with ab188229 at 1/1000 dilution, followed by Goat Anti-Rabbit IgG H&L (Alexa Fluor[®] 488) (**ab150077**) at 1/1000 dilution (green). Cytoplasmic staining in lactotrophic cells of anterior pituitary gland (PMID: 16468032). The nuclear counter stain is DAPI (blue).

Secondary antibody only control: Used PBS instead of primary antibody, secondary antibody is Goat Anti-Rabbit IgG H&L (Alexa Fluor[®] 488) (**ab150077**) at 1/1000 dilution.



Immunoprecipitation - Anti-Prolactin/PRL antibody [EPR18018-31] (ab188229)

Prolactin/PRL was immunoprecipitated from 0.35 mg of mouse pituitary tissue lysate with ab188229 at 1/30 dilution. Western blot was performed from the immunoprecipitate using ab188229 at 1/1000 dilution. VeriBlot for IP Detection Reagent (HRP) (**ab131366**), was used for detection at 1/10000 dilution.

Lane 1: Mouse pituitary tissue lysate 10 µg (Input).

Lane 2: ab188229 IP in mouse pituitary tissue lysate.

Lane 3: Rabbit monoclonal IgG (**ab172730**) instead of ab188229 in mouse pituitary tissue lysate.

Blocking and dilution buffer and concentration: 5% NFD/MTBST.

Exposure time: 1 second.

Why choose a recombinant antibody?



Research with confidence
Consistent and reproducible results



Long-term and scalable supply
Recombinant technology



Success from the first experiment
Confirmed specificity



Ethical standards compliant
Animal-free production

Anti-Prolactin/PRL antibody [EPR18018-31] (ab188229)

Please note: All products are "FOR RESEARCH USE ONLY. NOT FOR USE IN DIAGNOSTIC PROCEDURES"

Our Abpromise to you: Quality guaranteed and expert technical support

- Replacement or refund for products not performing as stated on the datasheet
- Valid for 12 months from date of delivery
- Response to your inquiry within 24 hours
- We provide support in Chinese, English, French, German, Japanese and Spanish
- Extensive multi-media technical resources to help you
- We investigate all quality concerns to ensure our products perform to the highest standards

If the product does not perform as described on this datasheet, we will offer a refund or replacement. For full details of the Abpromise, please visit <https://www.abcam.com/abpromise> or contact our technical team.

Terms and conditions

- Guarantee only valid for products bought direct from Abcam or one of our authorized distributors