

Anti-Prolactin/PRL antibody [EPR18018-31] - BSA and Azide free ab226491

Recombinant RabMAb

[5 Images](#)

Overview

Product name	Anti-Prolactin/PRL antibody [EPR18018-31] - BSA and Azide free
Description	Rabbit monoclonal [EPR18018-31] to Prolactin/PRL - BSA and Azide free
Host species	Rabbit
Tested applications	Suitable for: WB, IHC-P, IHC-Fr, IP
Species reactivity	Reacts with: Mouse, Rat Does not react with: Human
Immunogen	Recombinant fragment. This information is proprietary to Abcam and/or its suppliers.
Positive control	IHC-P: Mouse pituitary tissue.
General notes	<p>ab226491 is the carrier-free version of ab188229.</p> <p>Our carrier-free antibodies are typically supplied in a PBS-only formulation, purified and free of BSA, sodium azide and glycerol. The carrier-free buffer and high concentration allow for increased conjugation efficiency.</p> <p>This conjugation-ready format is designed for use with fluorochromes, metal isotopes, oligonucleotides, and enzymes, which makes them ideal for antibody labelling, functional and cell-based assays, flow-based assays (e.g. mass cytometry) and Multiplex Imaging applications.</p> <p>Use our conjugation kits for antibody conjugates that are ready-to-use in as little as 20 minutes with <1 minute hands-on-time and 100% antibody recovery: available for fluorescent dyes, HRP, biotin and gold.</p> <p>This product is compatible with the Maxpar[®] Antibody Labeling Kit from Fluidigm, without the need for antibody preparation. Maxpar[®] is a trademark of Fluidigm Canada Inc.</p> <p>This product is a recombinant monoclonal antibody, which offers several advantages including:</p> <ul style="list-style-type: none">- High batch-to-batch consistency and reproducibility- Improved sensitivity and specificity- Long-term security of supply- Animal-free production <p>For more information see here.</p> <p>Our RabMAb[®] technology is a patented hybridoma-based technology for making rabbit monoclonal antibodies. For details on our patents, please refer to RabMAb[®] patents.</p>

Properties

Form	Liquid
Storage instructions	Shipped at 4°C. Store at +4°C. Do Not Freeze.
Storage buffer	pH: 7.2 Constituent: PBS
Carrier free	Yes
Purity	Protein A purified
Clonality	Monoclonal
Clone number	EPR18018-31
Isotype	IgG

Applications

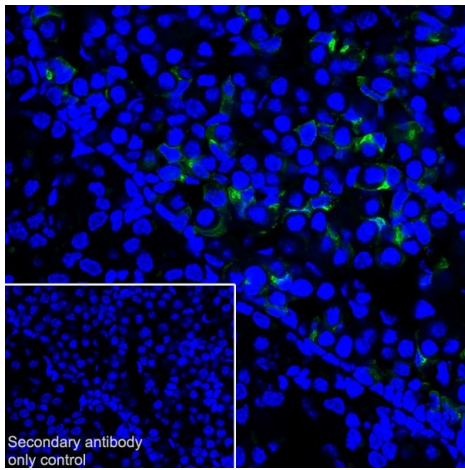
The Abpromise guarantee Our **Abpromise guarantee** covers the use of ab226491 in the following tested applications. The application notes include recommended starting dilutions; optimal dilutions/concentrations should be determined by the end user.

Application	Abreviews	Notes
WB		Use at an assay dependent concentration. Detects a band of approximately 23 kDa (predicted molecular weight: 25 kDa).
IHC-P		Use at an assay dependent concentration. Perform heat mediated antigen retrieval with Tris/EDTA buffer pH 9.0 before commencing with IHC staining protocol. This antibody is not suitable for human species in IHC application.
IHC-Fr		Use at an assay dependent concentration. Perform heat mediated antigen retrieval with 10 mM sodium citrate buffer pH 6.0 + 0.05% Tween-20 before commencing with IHC staining protocol. Under our IHC-Fr experimental conditions this antibody could not detect Prolactin on rat pituitary gland sample.
IP		Use at an assay dependent concentration.

Target

Relevance	Various hormones are secreted from the anterior pituitary during development and growth. Prolactin is a growth factor secreted by the anterior pituitary that is necessary for the proliferation and differentiation of the mammary glands.
Cellular localization	Secreted

Images

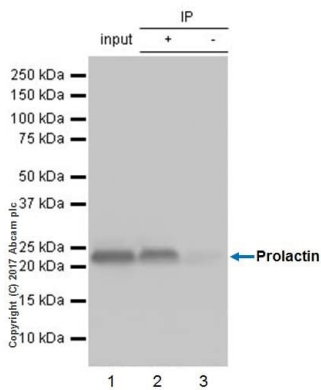


Immunohistochemistry (Frozen sections) - Anti-Prolactin/PRL antibody [EPR18018-31] - BSA and Azide free (ab226491)

Immunohistochemical analysis of 4% PFA-fixed, 0.2% Triton X-100 permeabilized mouse pituitary tissue labeling Prolactin/PRL with **ab188229** at 1/1000 dilution, followed by Goat Anti-Rabbit IgG H&L (Alexa Fluor[®] 488) (**ab150077**) at 1/1000 dilution (green). Cytoplasmic staining in lactotrophic cells of anterior pituitary gland (PMID: 16468032). The nuclear counter stain is DAPI (blue).

Secondary antibody only control: Used PBS instead of primary antibody, secondary antibody is Goat Anti-Rabbit IgG H&L (Alexa Fluor[®] 488) (**ab150077**) at 1/1000 dilution.

This data was developed using the same antibody clone in a different buffer formulation containing PBS, BSA, glycerol, and sodium azide (**ab188229**).



Immunoprecipitation - Anti-Prolactin/PRL antibody [EPR18018-31] - BSA and Azide free (ab226491)

Prolactin/PRL was immunoprecipitated from 0.35 mg of mouse pituitary tissue lysate with **ab188229** at 1/30 dilution. Western blot was performed from the immunoprecipitate using **ab188229** at 1/1000 dilution. VeriBlot for IP Detection Reagent (HRP) (**ab131366**), was used for detection at 1/10000 dilution.

Lane 1: Mouse pituitary tissue lysate 10 µg (Input).

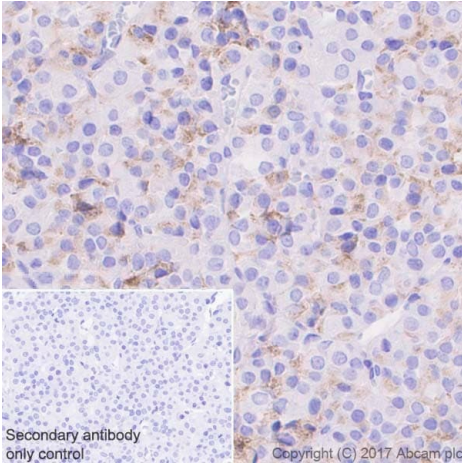
Lane 2: **ab188229** IP in mouse pituitary tissue lysate.

Lane 3: Rabbit monoclonal IgG (**ab172730**) instead of **ab188229** in mouse pituitary tissue lysate.

Blocking and dilution buffer and concentration: 5% NFDM/TBST.

Exposure time: 1 second.

This data was developed using the same antibody clone in a different buffer formulation containing PBS, BSA, glycerol, and sodium azide (**ab188229**).



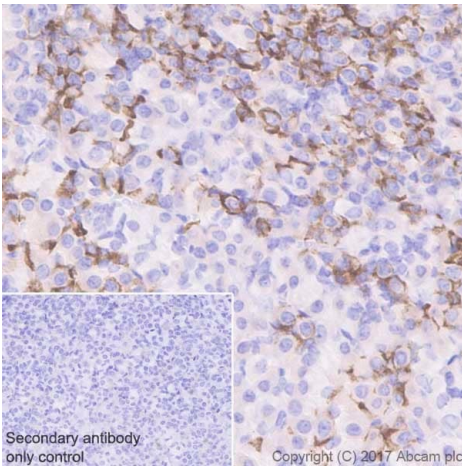
Immunohistochemistry (Formalin/PFA-fixed paraffin-embedded sections) - Anti-Prolactin/PRL antibody [EPR18018-31] - BSA and Azide free (ab226491)

Immunohistochemical analysis of paraffin-embedded rat pituitary tissue labeling Prolactin/PRL with **ab188229** at 1/16000 dilution, followed by Goat Anti-Rabbit IgG H&L (HRP) Ready to use. Cytoplasmic staining on rat pituitary (PMID: 24514953). Counter stained with hematoxylin.

Secondary antibody only control: Used PBS instead of primary antibody, secondary antibody is Goat Anti-Rabbit IgG H&L (HRP) Ready to use.

This data was developed using the same antibody clone in a different buffer formulation containing PBS, BSA, glycerol, and sodium azide (**ab188229**).

Perform heat mediated antigen retrieval with Tris/EDTA buffer pH 9.0 before commencing with IHC staining protocol.



Immunohistochemistry (Formalin/PFA-fixed paraffin-embedded sections) - Anti-Prolactin/PRL antibody [EPR18018-31] - BSA and Azide free (ab226491)

Immunohistochemical analysis of paraffin-embedded mouse pituitary tissue labeling Prolactin/PRL with **ab188229** at 1/16000 dilution, followed by Goat Anti-Rabbit IgG H&L (HRP) Ready to use. Cytoplasmic staining on mouse pituitary (PMID: 24514953). Counter stained with hematoxylin.

Secondary antibody only control: Used PBS instead of primary antibody, secondary antibody is Goat Anti-Rabbit IgG H&L (HRP) Ready to use.

This data was developed using the same antibody clone in a different buffer formulation containing PBS, BSA, glycerol, and sodium azide (**ab188229**).

Perform heat mediated antigen retrieval with Tris/EDTA buffer pH 9.0 before commencing with IHC staining protocol.

Why choose a recombinant antibody?



Research with confidence
Consistent and reproducible results



Long-term and scalable supply
Recombinant technology



Success from the first experiment
Confirmed specificity



Ethical standards compliant
Animal-free production

Anti-Prolactin/PRL antibody [EPR18018-31] - BSA
and Azide free (ab226491)

Please note: All products are "FOR RESEARCH USE ONLY. NOT FOR USE IN DIAGNOSTIC PROCEDURES"

Our Abpromise to you: Quality guaranteed and expert technical support

- Replacement or refund for products not performing as stated on the datasheet
- Valid for 12 months from date of delivery
- Response to your inquiry within 24 hours
- We provide support in Chinese, English, French, German, Japanese and Spanish
- Extensive multi-media technical resources to help you
- We investigate all quality concerns to ensure our products perform to the highest standards

If the product does not perform as described on this datasheet, we will offer a refund or replacement. For full details of the Abpromise, please visit <https://www.abcam.com/abpromise> or contact our technical team.

Terms and conditions

- Guarantee only valid for products bought direct from Abcam or one of our authorized distributors