

Anti-Prolactin/PRL antibody [EPR19372] - BSA and Azide free ab250714

Recombinant RabMAb

[5 Images](#)

Overview

Product name	Anti-Prolactin/PRL antibody [EPR19372] - BSA and Azide free
Description	Rabbit monoclonal [EPR19372] to Prolactin/PRL - BSA and Azide free
Host species	Rabbit
Tested applications	Suitable for: IP, IHC-Fr, WB
Species reactivity	Reacts with: Mouse, Rat
Immunogen	Recombinant full length protein. This information is proprietary to Abcam and/or its suppliers.
General notes	<p>ab250714 is the carrier-free version of ab183968.</p> <p>Our carrier-free antibodies are typically supplied in a PBS-only formulation, purified and free of BSA, sodium azide and glycerol. The carrier-free buffer and high concentration allow for increased conjugation efficiency.</p> <p>This conjugation-ready format is designed for use with fluorochromes, metal isotopes, oligonucleotides, and enzymes, which makes them ideal for antibody labelling, functional and cell-based assays, flow-based assays (e.g. mass cytometry) and Multiplex Imaging applications.</p> <p>Use our conjugation kits for antibody conjugates that are ready-to-use in as little as 20 minutes with <1 minute hands-on-time and 100% antibody recovery: available for fluorescent dyes, HRP, biotin and gold.</p> <p>This product is compatible with the Maxpar[®] Antibody Labeling Kit from Fluidigm, without the need for antibody preparation. Maxpar[®] is a trademark of Fluidigm Canada Inc.</p> <p>This product is a recombinant monoclonal antibody, which offers several advantages including:</p> <ul style="list-style-type: none">- High batch-to-batch consistency and reproducibility- Improved sensitivity and specificity- Long-term security of supply- Animal-free production <p>For more information see here.</p> <p>Our RabMAb[®] technology is a patented hybridoma-based technology for making rabbit monoclonal antibodies. For details on our patents, please refer to RabMAb[®] patents.</p>

Properties

Form	Liquid
Storage instructions	Shipped at 4°C. Store at +4°C. Do Not Freeze.
Storage buffer	pH: 7.2 Constituent: PBS
Carrier free	Yes
Purity	Protein A purified
Clonality	Monoclonal
Clone number	EPR19372
Isotype	IgG

Applications

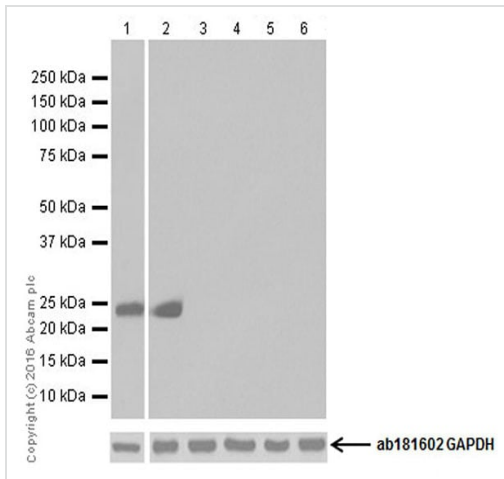
The Abpromise guarantee Our **Abpromise guarantee** covers the use of ab250714 in the following tested applications. The application notes include recommended starting dilutions; optimal dilutions/concentrations should be determined by the end user.

Application	Abreviews	Notes
IP		Use at an assay dependent concentration.
IHC-Fr		Use at an assay dependent concentration. Antigen retrieval: Heated citrate solution (10mM citrate pH 6.0 + 0.05% Tween-20). This application is recommended for mouse only.
WB		Use at an assay dependent concentration. Detects a band of approximately 25 kDa (predicted molecular weight: 25 kDa).

Target

Relevance	Various hormones are secreted from the anterior pituitary during development and growth. Prolactin is a growth factor secreted by the anterior pituitary that is necessary for the proliferation and differentiation of the mammary glands.
Cellular localization	Secreted

Images



Western blot - Anti-Prolactin/PRL antibody [EPR19372] - BSA and Azide free (ab250714)

All lanes : Anti-Prolactin/PRL antibody [EPR19372] ([ab183968](#)) at 1/5000 dilution

Lane 1 : Mouse pituitary lysate

Lane 2 : Rat pituitary lysate

Lane 3 : Mouse uterus tissue lysate

Lane 4 : Rat kidney tissue lysate

Lane 5 : C6 (Rat glial tumor cell line) whole cell lysate

Lane 6 : NIH/3T3 (Mouse embryonic fibroblast cell line) whole cell lysate

Lysates/proteins at 20 µg per lane.

Secondary

All lanes : Goat Anti-Rabbit IgG H&L (HRP) ([ab97051](#)) at 1/100000 dilution

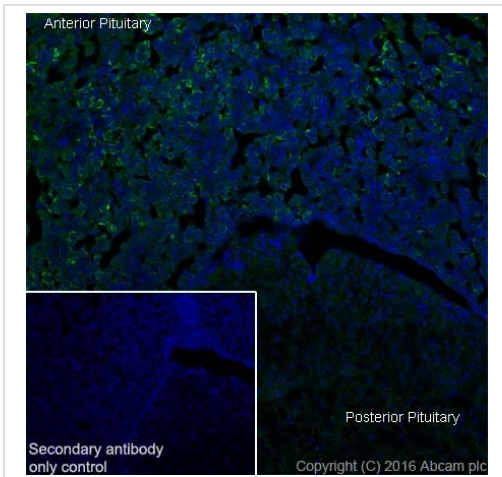
Predicted band size: 25 kDa

Observed band size: 25 kDa

This data was developed using [ab183968](#), the same antibody clone in a different buffer formulation.

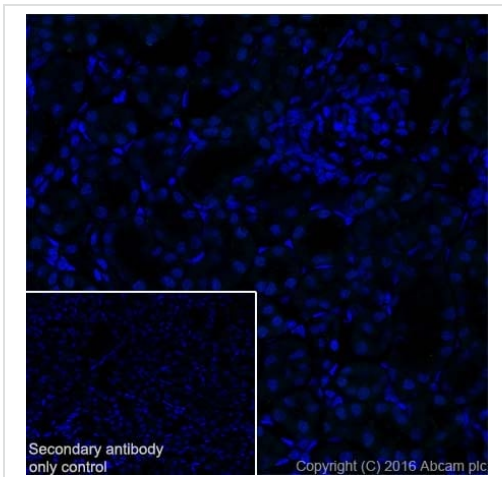
Blocking and dilution buffer: 5% NFD/MTBST.

Exposure times: Lane 1: 8 seconds; Lanes 2-6: 3 second.



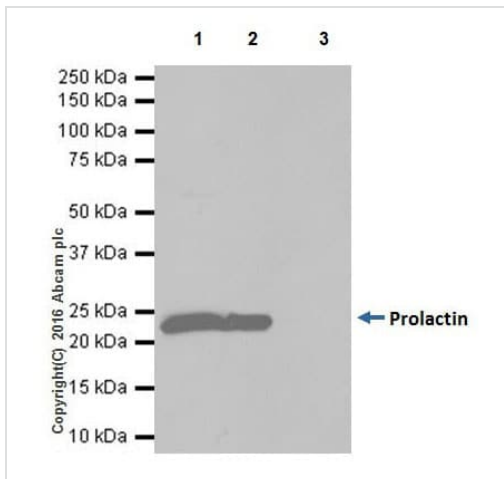
Immunohistochemistry (Frozen sections) - Anti-Prolactin/PRL antibody [EPR19372] - BSA and Azide free (ab250714)

This data was developed using [ab183968](#), the same antibody clone in a different buffer formulation. Immunohistochemical analysis of 4% paraformaldehyde-fixed, 0.2% Triton X-100 permeabilized frozen Mouse pituitary tissue labeling Prolactin/PRL with [ab183968](#) at 1/200 dilution, followed by Goat Anti-Rabbit IgG (Alexa Fluor[®] 488) ([ab150077](#)) secondary antibody at 1/1000 dilution (green). The result showed cytoplasmic staining on mouse anterior pituitary. The nuclear counterstain is DAPI (blue). Secondary antibody only control: Used PBS instead of primary antibody, secondary antibody is [ab150077](#) at 1/1000 dilution.



Immunohistochemistry (Frozen sections) - Anti-Prolactin/PRL antibody [EPR19372] - BSA and Azide free (ab250714)





This data was developed using [ab183968](#), the same antibody clone in a different buffer formulation. Immunohistochemical analysis of 4% paraformaldehyde-fixed, 0.2% Triton X-100 permeabilized frozen Mouse kidney tissue labeling Prolactin/PRL with [ab183968](#) at 1/200 dilution, followed by Goat Anti-Rabbit IgG (Alexa Fluor[®] 488) ([ab150077](#)) secondary antibody at 1/1000 dilution (green). The result showed negative staining on mouse kidney. The nuclear counterstain is DAPI (blue). Secondary antibody only control: Used PBS instead of primary antibody, secondary antibody is [ab150077](#) at 1/1000 dilution.



Immunoprecipitation - Anti-Prolactin/PRL antibody [EPR19372] - BSA and Azide free (ab250714)

This data was developed using **ab183968**, the same antibody clone in a different buffer formulation. Prolactin/PRL was immunoprecipitated from 0.35 mg of mouse pituitary whole cell lysate with **ab183968** at 1/30 dilution. Western blot was performed from the immunoprecipitate using **ab183968** at 1/5000 dilution. VeriBlot for IP Detection Reagent (HRP) (**ab131366**), was used for detection at 1/10000 dilution. Lane 1: Mouse pituitary whole cell lysate, 10µg (Input). Lane 2: **ab183968** IP in Mouse pituitary whole cell lysate. Lane 3: Rabbit IgG, monoclonal [EPR25A]-Isotype Control (**ab172730**) instead of **ab183968** in Mouse pituitary whole cell lysate. Blocking and dilution buffer and concentration: 5% NFDm/TBST. Exposure time: 10 seconds.

Why choose a recombinant antibody?

 <p>Research with confidence Consistent and reproducible results</p>	 <p>Long-term and scalable supply Recombinant technology</p>
 <p>Success from the first experiment Confirmed specificity</p>	 <p>Ethical standards compliant Animal-free production</p>

Anti-Prolactin/PRL antibody [EPR19372] - BSA and Azide free (ab250714)

Please note: All products are "FOR RESEARCH USE ONLY. NOT FOR USE IN DIAGNOSTIC PROCEDURES"

Our Abpromise to you: Quality guaranteed and expert technical support

- Replacement or refund for products not performing as stated on the datasheet
- Valid for 12 months from date of delivery
- Response to your inquiry within 24 hours
- We provide support in Chinese, English, French, German, Japanese and Spanish
- Extensive multi-media technical resources to help you
- We investigate all quality concerns to ensure our products perform to the highest standards

If the product does not perform as described on this datasheet, we will offer a refund or replacement. For full details of the Abpromise, please visit <https://www.abcam.com/abpromise> or contact our technical team.

Terms and conditions

- Guarantee only valid for products bought direct from Abcam or one of our authorized distributors