

Anti-Prolactin/PRL antibody [EPR19386] ab183967

Recombinant **RabMAb**

[2 References](#) [9 Images](#)

Overview

Product name	Anti-Prolactin/PRL antibody [EPR19386]
Description	Rabbit monoclonal [EPR19386] to Prolactin/PRL
Host species	Rabbit
Tested applications	Suitable for: WB, IHC-Fr, IHC-P, ICC/IF
Species reactivity	Reacts with: Mouse, Rat
Immunogen	Synthetic peptide. This information is proprietary to Abcam and/or its suppliers.
Positive control	WB: Mouse and rat pituitary lysates. IHC-P: Mouse adenohypophysis tissue. IHC-Fr: Mouse pituitary tissue. ICC/IF: HeLa cells transfected with Myc tagged Prolactin/PRL.
General notes	<p>This product is a recombinant monoclonal antibody, which offers several advantages including:</p> <ul style="list-style-type: none"> - High batch-to-batch consistency and reproducibility - Improved sensitivity and specificity - Long-term security of supply - Animal-free production <p>For more information see here.</p> <p>Our RabMAb[®] technology is a patented hybridoma-based technology for making rabbit monoclonal antibodies. For details on our patents, please refer to RabMAb[®] patents.</p>

Properties

Form	Liquid
Storage instructions	Shipped at 4°C. Store at +4°C short term (1-2 weeks). Upon delivery aliquot. Store at -20°C long term. Avoid freeze / thaw cycle.
Storage buffer	<p>pH: 7.2</p> <p>Preservative: 0.01% Sodium azide</p> <p>Constituents: PBS, 0.05% BSA, 40% Glycerol</p>
Purity	Protein A purified
Clonality	Monoclonal
Clone number	EPR19386
Isotype	IgG

Applications

The Abpromise guarantee

Our **Abpromise guarantee** covers the use of ab183967 in the following tested applications.

The application notes include recommended starting dilutions; optimal dilutions/concentrations should be determined by the end user.

Application	Abreviews	Notes
WB		1/1000. Detects a band of approximately 25 kDa (predicted molecular weight: 25 kDa).
IHC-Fr		1/200. Perform antigen retrieval with heated citrate solution (10mM citrate pH 6.0 + 0.05% Tween-20).
IHC-P		1/8000. Perform heat mediated antigen retrieval with Tris/EDTA buffer pH 9.0 before commencing with IHC staining protocol.
ICC/IF		1/100.

Target

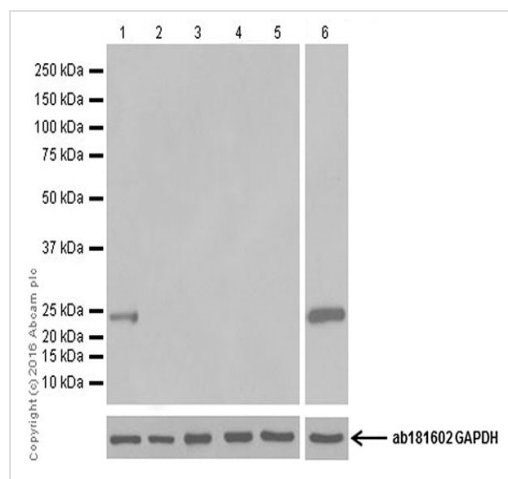
Relevance

Various hormones are secreted from the anterior pituitary during development and growth. Prolactin is a growth factor secreted by the anterior pituitary that is necessary for the proliferation and differentiation of the mammary glands.

Cellular localization

Secreted

Images



Western blot - Anti-Prolactin/PRL antibody
[EPR19386] (ab183967)

All lanes : Anti-Prolactin/PRL antibody [EPR19386] (ab183967) at 1/1000 dilution

Lane 1 : Mouse pituitary lysate

Lane 2 : Mouse uterus lysate

Lane 3 : Rat heart lysate

Lane 4 : C6 (Rat glial tumor cell line) whole cell lysate

Lane 5 : NIH/3T3 (Mouse embryonic fibroblast cell line) whole cell lysate

Lane 6 : Rat pituitary lysate

Lysates/proteins at 20 µg per lane.

Secondary

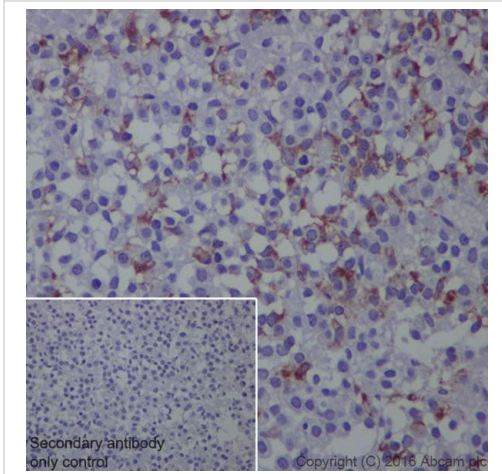
All lanes : Goat Anti-Rabbit IgG H&L (HRP) (**ab97051**) at 1/100000 dilution

Predicted band size: 25 kDa

Observed band size: 25 kDa

Blocking/Dilution buffer: 5% NFDM/TBST.

Exposure time: Lane 1, 2, 3, 4 and 5: 5 seconds; Lane 6: 1 second.

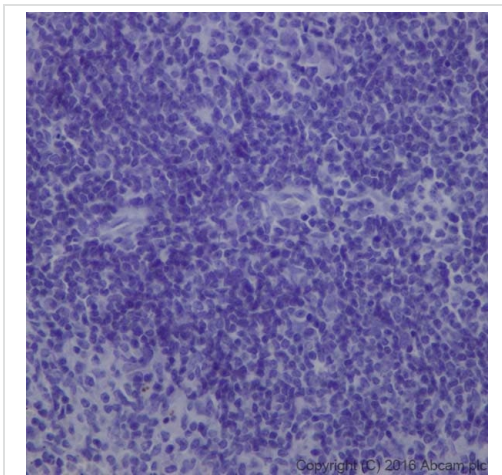


Immunohistochemistry (Formalin/PFA-fixed paraffin-embedded sections) - Anti-Prolactin/PRL antibody [EPR19386] (ab183967)

Immunohistochemical analysis of paraffin-embedded Mouse adenohypophysis tissue labeling Prolactin/PRL with ab183967 at 1/8000 dilution, followed by Goat Anti-Rabbit IgG H&L (HRP) (**ab97051**) at 1/500 dilution. Cytoplasm staining on mouse adenohypophysis was observed. Counter stained with Hematoxylin.

Secondary antibody only control: Used PBS instead of primary antibody, secondary antibody is **ab97051** at 1/500 dilution.

Perform heat mediated antigen retrieval with Tris/EDTA buffer pH 9.0 before commencing with IHC staining protocol.



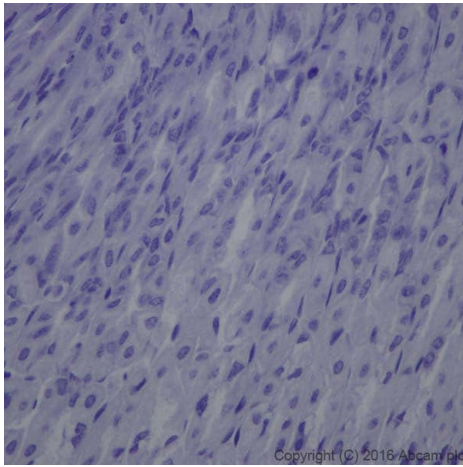
Immunohistochemistry (Formalin/PFA-fixed paraffin-embedded sections) - Anti-Prolactin/PRL antibody [EPR19386] (ab183967)

Immunohistochemical analysis of paraffin-embedded Mouse spleen tissue labeling Prolactin/PRL with ab183967 at 1/8000 dilution, followed by Goat Anti-Rabbit IgG H&L (HRP) (**ab97051**) at 1/500 dilution. No staining was observed on mouse spleen.

Counter stained with Hematoxylin.

Secondary antibody only control: Used PBS instead of primary antibody, secondary antibody is **ab97051** at 1/500 dilution.

Perform heat mediated antigen retrieval with Tris/EDTA buffer pH 9.0 before commencing with IHC staining protocol.



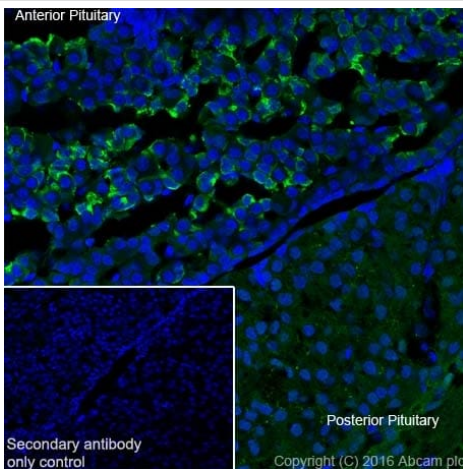
Immunohistochemistry (Formalin/PFA-fixed paraffin-embedded sections) - Anti-Prolactin/PRL antibody [EPR19386] (ab183967)

Immunohistochemical analysis of paraffin-embedded Mouse stomach tissue labeling Prolactin/PRL with ab183967 at 1/8000 dilution, followed by Goat Anti-Rabbit IgG H&L (HRP) (**ab97051**) at 1/500 dilution. No staining was observed on mouse stomach.

Counter stained with Hematoxylin.

Secondary antibody only control: Used PBS instead of primary antibody, secondary antibody is **ab97051** at 1/500 dilution.

Perform heat mediated antigen retrieval with Tris/EDTA buffer pH 9.0 before commencing with IHC staining protocol.



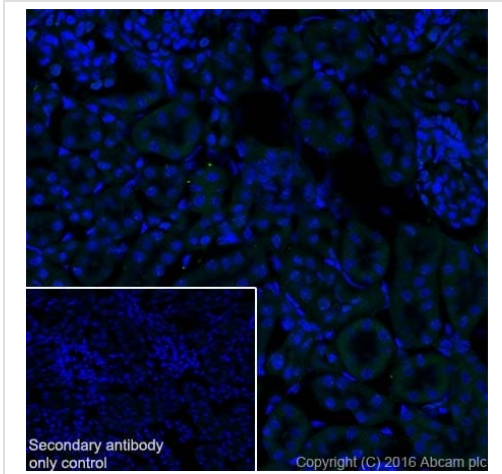
Immunohistochemistry (Frozen sections) - Anti-Prolactin/PRL antibody [EPR19386] (ab183967)

Immunohistochemical analysis of 4% paraformaldehyde-fixed, 0.2% Triton X-100 permeabilized frozen Mouse pituitary tissue labeling Prolactin/PRL with ab183967 at 1/200 dilution, followed by Goat Anti-Rabbit IgG (Alexa Fluor[®] 488) (**ab150077**) secondary antibody at 1/1000 dilution (green).

The result showed cytoplasmic staining on mouse anterior pituitary.

The nuclear counterstain is DAPI (blue).

Secondary antibody only control: Used PBS instead of primary antibody, secondary antibody is **ab150077** at 1/1000 dilution.



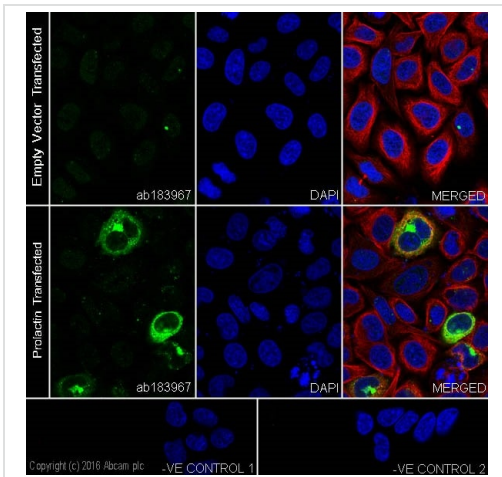
Immunohistochemistry (Frozen sections) - Anti-Prolactin/PRL antibody [EPR19386] (ab183967)

Immunohistochemical analysis of 4% paraformaldehyde-fixed, 0.2% Triton X-100 permeabilized frozen Mouse kidney tissue labeling Prolactin/PRL with ab183967 at 1/200 dilution, followed by Goat Anti-Rabbit IgG (Alexa Fluor® 488) (**ab150077**) secondary antibody at 1/1000 dilution (green).

No staining was observed on mouse kidney.

The nuclear counterstain is DAPI (blue).

Secondary antibody only control: Used PBS instead of primary antibody, secondary antibody is **ab150077** at 1/1000 dilution.



Immunocytochemistry/ Immunofluorescence - Anti-Prolactin/PRL antibody [EPR19386] (ab183967)

Immunofluorescent analysis of 4% paraformaldehyde-fixed, 0.1% Triton X-100 permeabilized HeLa (Human epithelial cell line from cervix adenocarcinoma) cells labeling Prolactin/PRL with ab183967 at 1/100 dilution, followed by Goat Anti-Rabbit IgG (Alexa Fluor® 488) (**ab150077**) secondary antibody at 1/1000 dilution (green).

The results show positive staining on HeLa cells transfected with myc-tagged Prolactin.

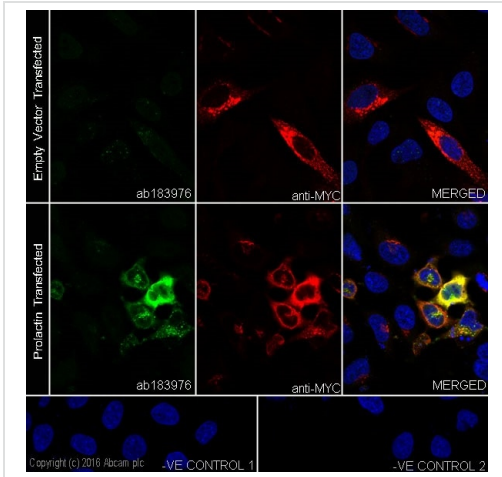
The nuclear counter stain is DAPI (blue).

Tubulin is detected with Anti-alpha Tubulin antibody [DM1A] - Loading Control (**ab7291**) at 1/1000 dilution and Goat Anti-Mouse IgG H&L (Alexa Fluor® 594) preadsorbed (**ab150120**) at 1/1000 dilution (red).

The negative controls are as follows:

-ve control 1: ab183967 at 1/100 dilution followed by **ab150120** at 1/1000 dilution.

-ve control 2: **ab7291** at 1/1000 dilution followed by **ab150077** at 1/1000 dilution.



Immunocytochemistry/ Immunofluorescence - Anti-Prolactin/PRL antibody [EPR19386] (ab183967)

Immunofluorescent analysis of 4% paraformaldehyde-fixed, 0.1% Triton X-100 permeabilized HeLa (Human epithelial cell line from cervix adenocarcinoma) cells labeling Prolactin/PRL with ab183967 at 1/100 dilution, followed by Goat Anti-Rabbit IgG (Alexa Fluor® 488) ([ab150077](#)) secondary antibody at 1/1000 dilution (green).

The results show positive staining on HeLa cells transfected with myc-tagged Prolactin.

The nuclear counter stain is DAPI (blue).

Myc is detected with anti-c-Myc (mouse mAb) at 1/1000 dilution and Goat Anti-Mouse IgG H&L (Alexa Fluor® 594) preadsorbed ([ab150120](#)) at 1/1000 dilution (red).

The negative controls are as follows:

-ve control 1: ab183967 at 1/100 dilution followed by [ab150120](#) at 1/1000 dilution.

-ve control 2: Anti-c-Myc at 1/1000 dilution followed by [ab150077](#) at 1/1000 dilution.

Why choose a recombinant antibody?

Research with confidence
Consistent and reproducible results

Long-term and scalable supply
Recombinant technology

Success from the first experiment
Confirmed specificity

Ethical standards compliant
Animal-free production

Anti-Prolactin/PRL antibody [EPR19386] (ab183967)

Please note: All products are "FOR RESEARCH USE ONLY. NOT FOR USE IN DIAGNOSTIC PROCEDURES"

Our Abpromise to you: Quality guaranteed and expert technical support

- Replacement or refund for products not performing as stated on the datasheet
- Valid for 12 months from date of delivery
- Response to your inquiry within 24 hours
- We provide support in Chinese, English, French, German, Japanese and Spanish
- Extensive multi-media technical resources to help you

- We investigate all quality concerns to ensure our products perform to the highest standards

If the product does not perform as described on this datasheet, we will offer a refund or replacement. For full details of the Abpromise, please visit <https://www.abcam.com/abpromise> or contact our technical team.

Terms and conditions

- Guarantee only valid for products bought direct from Abcam or one of our authorized distributors