

Anti-Prolactin/PRL antibody [EPR19386] - BSA and Azide free ab238938

Recombinant RabMAb

8 Images

Overview

Product name	Anti-Prolactin/PRL antibody [EPR19386] - BSA and Azide free
Description	Rabbit monoclonal [EPR19386] to Prolactin/PRL - BSA and Azide free
Host species	Rabbit
Tested applications	Suitable for: WB, IHC-P, IHC-Fr, ICC/IF
Species reactivity	Reacts with: Mouse, Rat
Immunogen	Synthetic peptide. This information is proprietary to Abcam and/or its suppliers.
Positive control	IHC-P: Mouse adenohypophysis tissue.
General notes	ab238938 is the carrier-free version of ab183967 .

Our **carrier-free** antibodies are typically supplied in a PBS-only formulation, purified and free of BSA, sodium azide and glycerol. The carrier-free buffer and high concentration allow for increased conjugation efficiency.

This conjugation-ready format is designed for use with fluorochromes, metal isotopes, oligonucleotides, and enzymes, which makes them ideal for antibody labelling, functional and cell-based assays, flow-based assays (e.g. mass cytometry) and Multiplex Imaging applications.

Use our **conjugation kits** for antibody conjugates that are ready-to-use in as little as 20 minutes with <1 minute hands-on-time and 100% antibody recovery: available for fluorescent dyes, HRP, biotin and gold.

This product is compatible with the Maxpar[®] Antibody Labeling Kit from Fluidigm, without the need for antibody preparation. Maxpar[®] is a trademark of Fluidigm Canada Inc.

This product is a recombinant monoclonal antibody, which offers several advantages including:

- High batch-to-batch consistency and reproducibility
- Improved sensitivity and specificity
- Long-term security of supply
- Animal-free production

For more information [see here](#).

Our RabMAb[®] technology is a patented hybridoma-based technology for making rabbit monoclonal antibodies. For details on our patents, please refer to [RabMAb[®] patents](#).

Properties

Form	Liquid
Storage instructions	Shipped at 4°C. Store at +4°C. Do Not Freeze.
Storage buffer	pH: 7.2 Constituent: PBS
Carrier free	Yes
Purity	Protein A purified
Clonality	Monoclonal
Clone number	EPR19386
Isotype	IgG

Applications

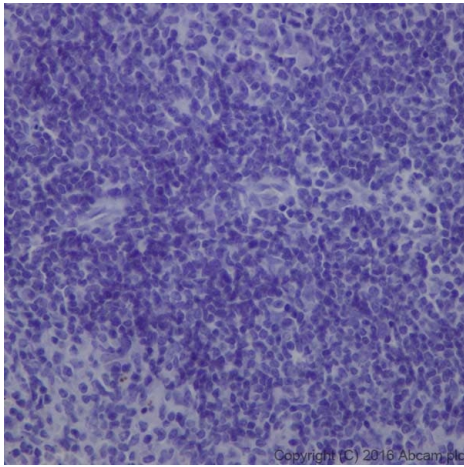
The Abpromise guarantee Our **Abpromise guarantee** covers the use of ab238938 in the following tested applications. The application notes include recommended starting dilutions; optimal dilutions/concentrations should be determined by the end user.

Application	Abreviews	Notes
WB		Use at an assay dependent concentration. Detects a band of approximately 25 kDa (predicted molecular weight: 25 kDa).
IHC-P		Use at an assay dependent concentration. Perform heat mediated antigen retrieval with Tris/EDTA buffer pH 9.0 before commencing with IHC staining protocol.
IHC-Fr		Use at an assay dependent concentration. Perform antigen retrieval with heated citrate solution (10mM citrate pH 6.0 + 0.05% Tween-20).
ICC/IF		Use at an assay dependent concentration.

Target

Relevance	Various hormones are secreted from the anterior pituitary during development and growth. Prolactin is a growth factor secreted by the anterior pituitary that is necessary for the proliferation and differentiation of the mammary glands.
Cellular localization	Secreted

Images



Immunohistochemistry (Formalin/PFA-fixed paraffin-embedded sections) - Anti-Prolactin/PRL antibody [EPR19386] - BSA and Azide free (ab238938)

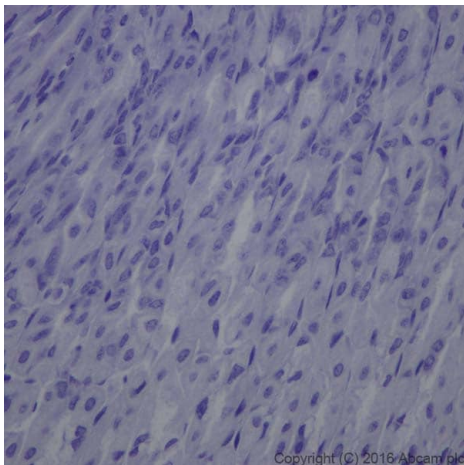
Immunohistochemical analysis of paraffin-embedded Mouse spleen tissue labeling Prolactin/PRL with [ab183967](#) at 1/8000 dilution, followed by Goat Anti-Rabbit IgG H&L (HRP) ([ab97051](#)) at 1/500 dilution. No staining was observed on mouse spleen.

Counter stained with Hematoxylin.

Secondary antibody only control: Used PBS instead of primary antibody, secondary antibody is [ab97051](#) at 1/500 dilution.

This data was developed using the same antibody clone in a different buffer formulation containing PBS, BSA, glycerol, and sodium azide ([ab183967](#)).

Heat mediated antigen retrieval was performed with Tris/EDTA buffer pH 9.0 before commencing with IHC staining protocol.



Immunohistochemistry (Formalin/PFA-fixed paraffin-embedded sections) - Anti-Prolactin/PRL antibody [EPR19386] - BSA and Azide free (ab238938)

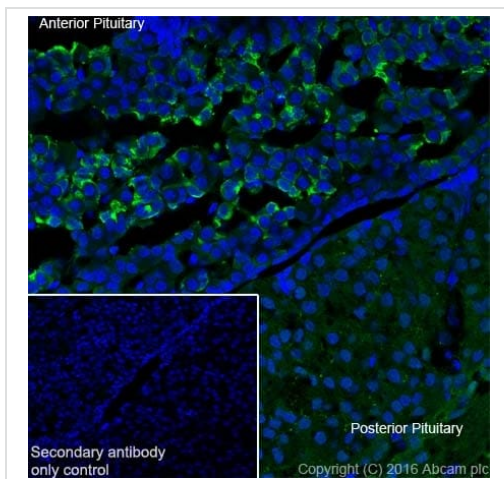
Immunohistochemical analysis of paraffin-embedded Mouse stomach tissue labeling Prolactin/PRL with [ab183967](#) at 1/8000 dilution, followed by Goat Anti-Rabbit IgG H&L (HRP) ([ab97051](#)) at 1/500 dilution. No staining was observed on mouse stomach.

Counter stained with Hematoxylin.

Secondary antibody only control: Used PBS instead of primary antibody, secondary antibody is [ab97051](#) at 1/500 dilution.

This data was developed using the same antibody clone in a different buffer formulation containing PBS, BSA, glycerol, and sodium azide ([ab183967](#)).

Heat mediated antigen retrieval was performed with Tris/EDTA buffer pH 9.0 before commencing with IHC staining protocol.



Immunohistochemistry (Frozen sections) - Anti-Prolactin/PRL antibody [EPR19386] - BSA and Azide free (ab238938)

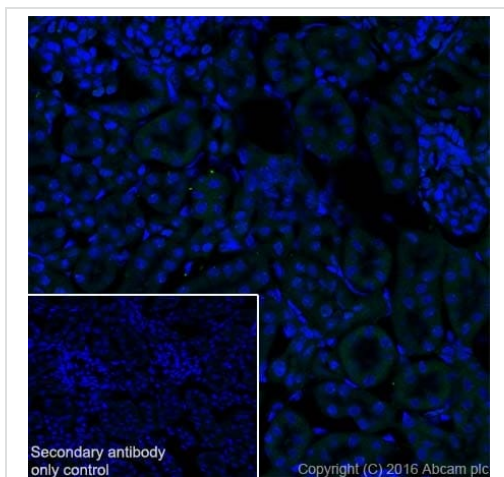
Immunohistochemical analysis of 4% paraformaldehyde-fixed, 0.2% Triton X-100 permeabilized frozen Mouse pituitary tissue labeling Prolactin/PRL with [ab183967](#) at 1/200 dilution, followed by Goat Anti-Rabbit IgG (Alexa Fluor® 488) ([ab150077](#)) secondary antibody at 1/1000 dilution (green).

The result showed cytoplasmic staining on mouse anterior pituitary.

The nuclear counterstain is DAPI (blue).

Secondary antibody only control: Used PBS instead of primary antibody, secondary antibody is [ab150077](#) at 1/1000 dilution.

This data was developed using the same antibody clone in a different buffer formulation containing PBS, BSA, glycerol, and sodium azide ([ab183967](#)).



Immunohistochemistry (Frozen sections) - Anti-Prolactin/PRL antibody [EPR19386] - BSA and Azide free (ab238938)

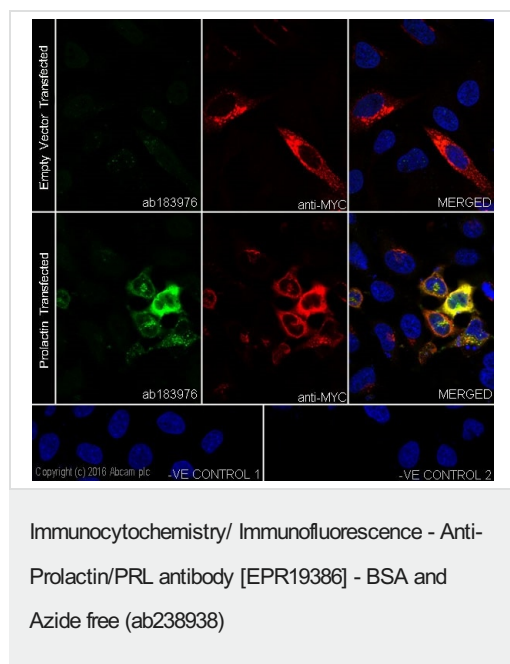
Immunohistochemical analysis of 4% paraformaldehyde-fixed, 0.2% Triton X-100 permeabilized frozen Mouse kidney tissue labeling Prolactin/PRL with [ab183967](#) at 1/200 dilution, followed by Goat Anti-Rabbit IgG (Alexa Fluor® 488) ([ab150077](#)) secondary antibody at 1/1000 dilution (green).

No staining was observed on mouse kidney.

The nuclear counterstain is DAPI (blue).

Secondary antibody only control: Used PBS instead of primary antibody, secondary antibody is [ab150077](#) at 1/1000 dilution.

This data was developed using the same antibody clone in a different buffer formulation containing PBS, BSA, glycerol, and sodium azide ([ab183967](#)).



Immunofluorescent analysis of 4% paraformaldehyde-fixed, 0.1% Triton X-100 permeabilized HeLa (Human epithelial cell line from cervix adenocarcinoma) cells labeling Prolactin/PRL with **ab183967** at 1/100 dilution, followed by Goat Anti-Rabbit IgG (Alexa Fluor® 488) (**ab150077**) secondary antibody at 1/1000 dilution (green).

The results show positive staining on HeLa cells transfected with myc-tagged Prolactin.

The nuclear counter stain is DAPI (blue).

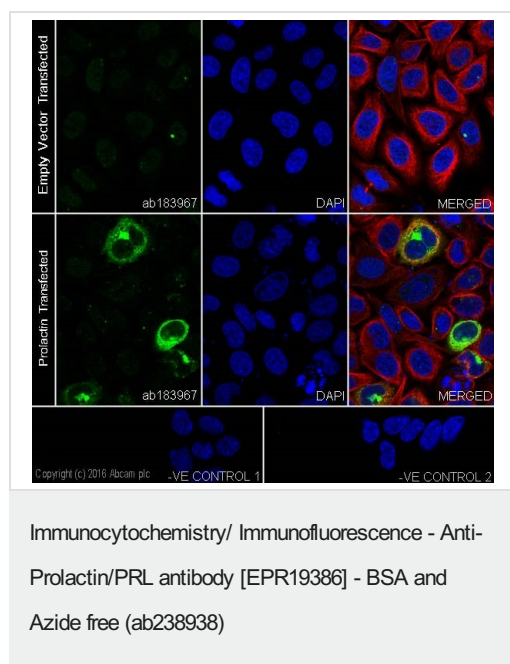
Myc is detected with anti-c-Myc (mouse mAb) at 1/1000 dilution and Goat Anti-Mouse IgG H&L (Alexa Fluor® 594) preadsorbed (**ab150120**) at 1/1000 dilution (red).

The negative controls are as follows:

-ve control 1: **ab183967** at 1/100 dilution followed by **ab150120** at 1/1000 dilution.

-ve control 2: Anti-c-Myc at 1/1000 dilution followed by **ab150077** at 1/1000 dilution.

This data was developed using the same antibody clone in a different buffer formulation containing PBS, BSA, glycerol, and sodium azide (**ab183967**).



Immunofluorescent analysis of 4% paraformaldehyde-fixed, 0.1% Triton X-100 permeabilized HeLa (Human epithelial cell line from cervix adenocarcinoma) cells labeling Prolactin/PRL with **ab183967** at 1/100 dilution, followed by Goat Anti-Rabbit IgG (Alexa Fluor® 488) (**ab150077**) secondary antibody at 1/1000 dilution (green).

The results show positive staining on HeLa cells transfected with myc-tagged Prolactin.

The nuclear counter stain is DAPI (blue).

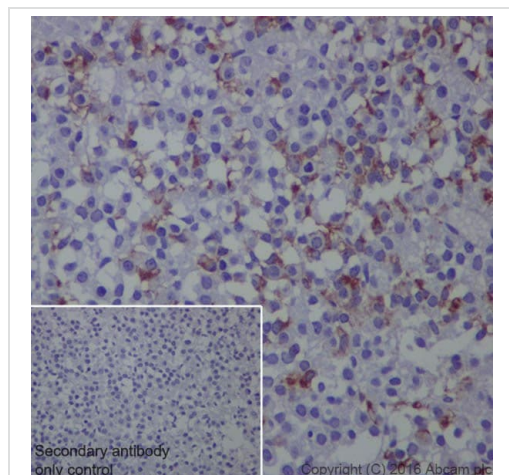
Tubulin is detected with Anti-alpha Tubulin antibody [DM1A] - Loading Control (**ab7291**) at 1/1000 dilution and Goat Anti-Mouse IgG H&L (Alexa Fluor® 594) preadsorbed (**ab150120**) at 1/1000 dilution (red).

The negative controls are as follows:

-ve control 1: **ab183967** at 1/100 dilution followed by **ab150120** at 1/1000 dilution.

-ve control 2: **ab7291** at 1/1000 dilution followed by **ab150077** at 1/1000 dilution.

This data was developed using the same antibody clone in a different buffer formulation containing PBS, BSA, glycerol, and sodium azide (**ab183967**).



Immunohistochemistry (Formalin/PFA-fixed paraffin-embedded sections) - Anti-Prolactin/PRL antibody [EPR19386] - BSA and Azide free (ab238938)

Immunohistochemical analysis of paraffin-embedded Mouse adenohypophysis tissue labeling Prolactin/PRL with **ab183967** at 1/8000 dilution, followed by Goat Anti-Rabbit IgG H&L (HRP) (**ab97051**) at 1/500 dilution. Cytoplasm staining on mouse adenohypophysis was observed. Counter stained with Hematoxylin.

Secondary antibody only control: Used PBS instead of primary antibody, secondary antibody is **ab97051** at 1/500 dilution.

This data was developed using the same antibody clone in a different buffer formulation containing PBS, BSA, glycerol, and sodium azide (**ab183967**).

Heat mediated antigen retrieval was performed with Tris/EDTA buffer pH 9.0 before commencing with IHC staining protocol.

Why choose a recombinant antibody?

 <p>Research with confidence Consistent and reproducible results</p>	 <p>Long-term and scalable supply Recombinant technology</p>
 <p>Success from the first experiment Confirmed specificity</p>	 <p>Ethical standards compliant Animal-free production</p>

Anti-Prolactin/PRL antibody [EPR19386] - BSA and Azide free (ab238938)

Please note: All products are "FOR RESEARCH USE ONLY. NOT FOR USE IN DIAGNOSTIC PROCEDURES"

Our Abpromise to you: Quality guaranteed and expert technical support

- Replacement or refund for products not performing as stated on the datasheet
- Valid for 12 months from date of delivery
- Response to your inquiry within 24 hours

- We provide support in Chinese, English, French, German, Japanese and Spanish
- Extensive multi-media technical resources to help you
- We investigate all quality concerns to ensure our products perform to the highest standards

If the product does not perform as described on this datasheet, we will offer a refund or replacement. For full details of the Abpromise, please visit <https://www.abcam.com/abpromise> or contact our technical team.

Terms and conditions

- Guarantee only valid for products bought direct from Abcam or one of our authorized distributors