

## Product datasheet

### Anti-Propertdin/PFC antibody ab186834

★ ★ ★ ★ ★ [1 Abreviews](#) [1 References](#) [2 Images](#)

#### Overview

<b>Product name</b>	Anti-Propertdin/PFC antibody
<b>Description</b>	Rabbit polyclonal to Propertdin/PFC
<b>Host species</b>	Rabbit
<b>Tested applications</b>	<b>Suitable for:</b> ICC/IF, WB, IHC-P
<b>Species reactivity</b>	<b>Reacts with:</b> Mouse, Rat, Human
<b>Immunogen</b>	Recombinant full length protein corresponding to Human Propertdin/PFC aa 1-469. Database link: <a href="#">P27918</a>
<b>General notes</b>	<p>The Life Science industry has been in the grips of a reproducibility crisis for a number of years. Abcam is leading the way in addressing this with our range of recombinant monoclonal antibodies and knockout edited cell lines for gold-standard validation. Please check that this product meets your needs before purchasing.</p> <p>If you have any questions, special requirements or concerns, please send us an inquiry and/or contact our Support team ahead of purchase. Recommended alternatives for this product can be found below, along with publications, customer reviews and Q&amp;As</p>

#### Properties

<b>Form</b>	Liquid
<b>Storage instructions</b>	Shipped at 4°C. Store at +4°C short term (1-2 weeks). Upon delivery aliquot. Store at -20°C long term. Avoid freeze / thaw cycle.
<b>Storage buffer</b>	pH: 7.30 Preservative: 0.02% Sodium azide Constituents: 50% Glycerol, 49% PBS
<b>Purity</b>	Immunogen affinity purified
<b>Clonality</b>	Polyclonal
<b>Isotype</b>	IgG

#### Applications

**The Abpromise guarantee** Our **[Abpromise guarantee](#)** covers the use of ab186834 in the following tested applications.

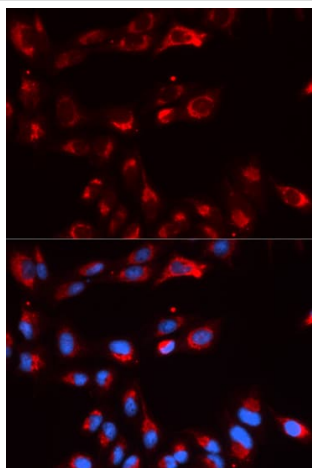
The application notes include recommended starting dilutions; optimal dilutions/concentrations should be determined by the end user.

Application	Abreviews	Notes
ICC/IF		Use at an assay dependent concentration.
WB		1/500 - 1/2000. Predicted molecular weight: 51 kDa.
IHC-P		Use at an assay dependent concentration.

## Target

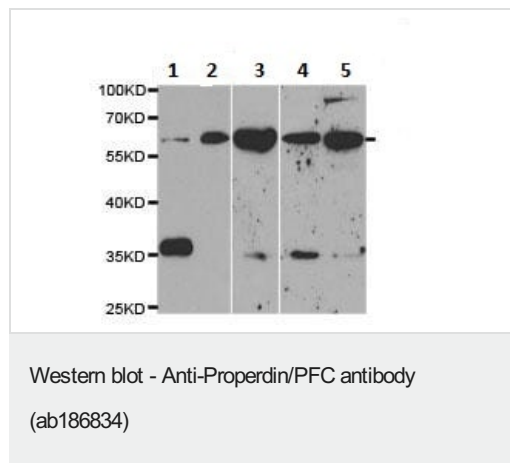
<b>Function</b>	A positive regulator of the alternate pathway of complement. It binds to and stabilizes the C3- and C5-convertase enzyme complexes.
<b>Involvement in disease</b>	Defects in CFP are the cause of properdin deficiency (PFD) [MIM:312060]. PFD results in higher susceptibility to bacterial infections; especially to meningococcal infections. Three phenotypes have been reported: complete deficiency (type I), incomplete deficiency (type II), and dysfunction of properdin (type III).
<b>Sequence similarities</b>	Contains 6 TSP type-1 domains.
<b>Cellular localization</b>	Secreted.

## Images



Immunocytochemistry/Immunofluorescence analysis of U2OS cells using ab186834. Blue DAPI for nuclear staining.

Immunocytochemistry/ Immunofluorescence - Anti-Propertin/PFC antibody (ab186834)



**All lanes :** Anti-Propertdin/PFC antibody (ab186834) at 1/500 dilution

**Lane 1 :** Extracts from 293T cell line

**Lane 2 :** Extracts from 3T3L1 cell line

**Lane 3 :** Extracts from mouse liver

**Lane 4 :** Extracts from mouse brain

**Lane 5 :** Extracts from mouse kidney

**Predicted band size:** 51 kDa

**Please note:** All products are "FOR RESEARCH USE ONLY. NOT FOR USE IN DIAGNOSTIC PROCEDURES"

### Our Abpromise to you: Quality guaranteed and expert technical support

- Replacement or refund for products not performing as stated on the datasheet
- Valid for 12 months from date of delivery
- Response to your inquiry within 24 hours
- We provide support in Chinese, English, French, German, Japanese and Spanish
- Extensive multi-media technical resources to help you
- We investigate all quality concerns to ensure our products perform to the highest standards

If the product does not perform as described on this datasheet, we will offer a refund or replacement. For full details of the Abpromise, please visit <https://www.abcam.com/abpromise> or contact our technical team.

### Terms and conditions

- Guarantee only valid for products bought direct from Abcam or one of our authorized distributors