


## Product datasheet

# Anti-Prostaglandin E Receptor EP2/PTGER2 antibody ab124419

[2 References](#) [2 Images](#)

### Overview

<b>Product name</b>	Anti-Prostaglandin E Receptor EP2/PTGER2 antibody
<b>Description</b>	Rabbit polyclonal to Prostaglandin E Receptor EP2/PTGER2
<b>Host species</b>	Rabbit
<b>Tested applications</b>	<b>Suitable for:</b> WB, IHC-P
<b>Species reactivity</b>	<b>Reacts with:</b> Mouse, Human <b>Predicted to work with:</b> Rat 
<b>Immunogen</b>	Synthetic peptide corresponding to Human Prostaglandin E Receptor EP2/PTGER2 (C terminal).
<b>General notes</b>	<p>The Life Science industry has been in the grips of a reproducibility crisis for a number of years. Abcam is leading the way in addressing this with our range of recombinant monoclonal antibodies and knockout edited cell lines for gold-standard validation. Please check that this product meets your needs before purchasing.</p> <p>If you have any questions, special requirements or concerns, please send us an inquiry and/or contact our Support team ahead of purchase. Recommended alternatives for this product can be found below, along with publications, customer reviews and Q&amp;As</p>

### Properties

<b>Form</b>	Liquid
<b>Storage instructions</b>	Shipped at 4°C. Store at -20°C. Stable for 12 months at -20°C.
<b>Storage buffer</b>	<p>pH: 7.40</p> <p>Preservative: 0.02% Sodium azide</p> <p>Constituents: 49% PBS, 50% Glycerol (glycerin, glycerine), 0.88% Sodium chloride</p> <p>(without Mg<sup>2+</sup>, Ca<sup>2+</sup>)</p>
<b>Purity</b>	Immunogen affinity purified
<b>Clonality</b>	Polyclonal
<b>Isotype</b>	IgG

### Applications

## Applications

### The Abpromise guarantee

Our **Abpromise guarantee** covers the use of ab124419 in the following tested applications.

The application notes include recommended starting dilutions; optimal dilutions/concentrations should be determined by the end user.

Application	Abreviews	Notes
WB		1/500 - 1/1000. Predicted molecular weight: 40 kDa.
IHC-P		Use a concentration of 5 µg/ml.

## Target

### Function

Receptor for prostaglandin E2 (PGE2). The activity of this receptor is mediated by G(s) proteins that stimulate adenylate cyclase. The subsequent raise in intracellular cAMP is responsible for the relaxing effect of this receptor on smooth muscle.

### Tissue specificity

Placenta and lung.

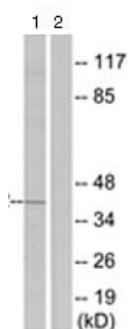
### Sequence similarities

Belongs to the G-protein coupled receptor 1 family.

### Cellular localization

Cell membrane.

## Images



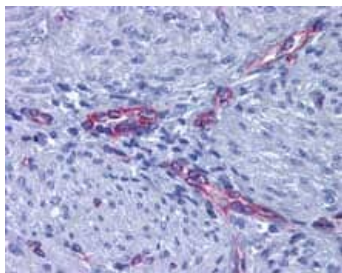
Western blot - Anti-Prostaglandin E Receptor  
EP2/PTGER2 antibody (ab124419)

**All lanes :** Anti-Prostaglandin E Receptor EP2/PTGER2 antibody  
(ab124419) at 1/500 dilution

**Lane 1 :** Mouse liver cell extract

**Lane 2 :** Mouse liver cell extract with synthesized peptide

**Predicted band size:** 40 kDa



Staining of Prostaglandin E Receptor EP2/PTGER2 in Paraffin-embedded Human Uterus, Myometrium tissue by Immunohistochemistry using ab124419 at a concentration of 5 µg/ml.

Immunohistochemistry (Formalin/PFA-fixed paraffin-embedded sections) - Anti-Prostaglandin E Receptor EP2/PTGER2 antibody (ab124419)

**Please note:** All products are "FOR RESEARCH USE ONLY. NOT FOR USE IN DIAGNOSTIC PROCEDURES"

### Our Abpromise to you: Quality guaranteed and expert technical support

---

- Replacement or refund for products not performing as stated on the datasheet
- Valid for 12 months from date of delivery
- Response to your inquiry within 24 hours
- We provide support in Chinese, English, French, German, Japanese and Spanish
- Extensive multi-media technical resources to help you
- We investigate all quality concerns to ensure our products perform to the highest standards

If the product does not perform as described on this datasheet, we will offer a refund or replacement. For full details of the Abpromise, please visit <https://www.abcam.com/abpromise> or contact our technical team.

### Terms and conditions

---

- Guarantee only valid for products bought direct from Abcam or one of our authorized distributors