


Product datasheet

Anti-Prostaglandin E Synthase/MPGES-1 antibody ab62050

★★★★★ [3 Abreviews](#) [11 References](#) [2 Images](#)

Overview

Product name	Anti-Prostaglandin E Synthase/MPGES-1 antibody
Description	Rabbit polyclonal to Prostaglandin E Synthase/MPGES-1
Host species	Rabbit
Tested applications	Suitable for: WB, IHC-P
Species reactivity	Reacts with: Mouse, Human Predicted to work with: Rat, Rabbit, Chicken, Cow, Dog, Pig, Xenopus laevis, Monkey, Zebrafish 
Immunogen	Synthetic peptide. This information is proprietary to Abcam and/or its suppliers.
General notes	<p>The Life Science industry has been in the grips of a reproducibility crisis for a number of years. Abcam is leading the way in addressing this with our range of recombinant monoclonal antibodies and knockout edited cell lines for gold-standard validation. Please check that this product meets your needs before purchasing.</p> <p>If you have any questions, special requirements or concerns, please send us an inquiry and/or contact our Support team ahead of purchase. Recommended alternatives for this product can be found below, along with publications, customer reviews and Q&As</p>

Properties

Form	Liquid
Storage instructions	Shipped at 4°C. Store at +4°C short term (1-2 weeks). Upon delivery aliquot. Store at -20°C or -80°C. Avoid freeze / thaw cycle.
Storage buffer	pH: 7.4 Preservative: 0.1% Sodium azide Constituent: PBS
Purity	Immunogen affinity purified
Clonality	Polyclonal
Isotype	IgG

Applications

Applications

The Abpromise guarantee

Our **Abpromise guarantee** covers the use of ab62050 in the following tested applications.

The application notes include recommended starting dilutions; optimal dilutions/concentrations should be determined by the end user.

Application	Abreviews	Notes
WB	★★★★★ (2)	Use at an assay dependent concentration.
IHC-P	★★★★★ (1)	Use a concentration of 10 µg/ml.

Target

Function

Catalyzes the oxidoreduction of prostaglandin endoperoxide H2 (PGH2) to prostaglandin E2 (PGE2).

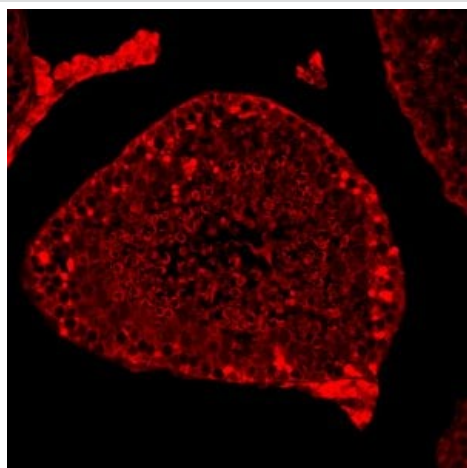
Sequence similarities

Belongs to the MAPEG family.

Cellular localization

Membrane.

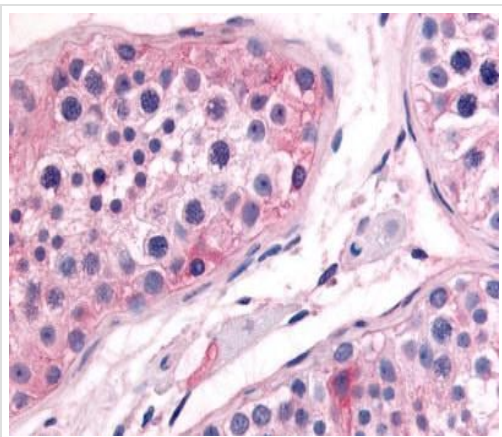
Images



ab62050 staining Prostaglandin E Synthase/MPGES-1 in Mouse testis tissue sections by Immunohistochemistry (IHC-P - paraformaldehyde-fixed, paraffin-embedded sections). Tissue was fixed with paraformaldehyde, permeabilized with Triton-X and blocked with 10% serum for 30 minutes at 24°C; antigen retrieval was by heat mediation in a citrate buffer. Samples were incubated with primary antibody (1/50) for 20 hours at 4°C. **ab150075**, a donkey **anti-rabbit Alexa Fluor® 647**- (1/200) was used as the secondary antibody.

Immunohistochemistry (Formalin/PFA-fixed paraffin-embedded sections) - Anti-Prostaglandin E Synthase/MPGES-1 antibody (ab62050)

This image is courtesy of an anonymous Abreview



Immunohistochemical analysis of formalin-fixed, paraffin-embedded Human testis tissue, staining Prostaglandin E Synthase/MPGES-1 with ab62050 at 10 µg/ml.

Immunohistochemistry (Formalin/PFA-fixed paraffin-embedded sections) - Anti-Prostaglandin E Synthase/MPGES-1 antibody (ab62050)

Please note: All products are "FOR RESEARCH USE ONLY. NOT FOR USE IN DIAGNOSTIC PROCEDURES"

Our Abpromise to you: Quality guaranteed and expert technical support

- Replacement or refund for products not performing as stated on the datasheet
- Valid for 12 months from date of delivery
- Response to your inquiry within 24 hours
- We provide support in Chinese, English, French, German, Japanese and Spanish
- Extensive multi-media technical resources to help you
- We investigate all quality concerns to ensure our products perform to the highest standards

If the product does not perform as described on this datasheet, we will offer a refund or replacement. For full details of the Abpromise, please visit <https://www.abcam.com/abpromise> or contact our technical team.

Terms and conditions

- Guarantee only valid for products bought direct from Abcam or one of our authorized distributors