

Anti-Prostate Specific Antigen antibody [3E6] ab140337

2 Images

Overview

Product name	Anti-Prostate Specific Antigen antibody [3E6]
Description	Mouse monoclonal [3E6] to Prostate Specific Antigen
Host species	Mouse
Tested applications	Suitable for: IHC-P, ICC/IF
Species reactivity	Reacts with: Human
Immunogen	Recombinant full length protein corresponding to Human Prostate Specific Antigen aa 1-300. Derived by fusion of SP2/0-Ag14 Mouse myeloma cells with spleen cells from a Mouse immunized with Human Prostate specific Antigen (PSA). Database link: P07288
Positive control	Recombinant Human Prostate Specific Antigen protein (denatured) (ab126692) can be used as a positive control in WB. Human prostate tissue; LNCaP cells.
General notes	<p>The Life Science industry has been in the grips of a reproducibility crisis for a number of years. Abcam is leading the way in addressing this with our range of recombinant monoclonal antibodies and knockout edited cell lines for gold-standard validation. Please check that this product meets your needs before purchasing.</p> <p>If you have any questions, special requirements or concerns, please send us an inquiry and/or contact our Support team ahead of purchase. Recommended alternatives for this product can be found below, along with publications, customer reviews and Q&As</p>

Properties

Form	Liquid
Storage instructions	Shipped at 4°C. Store at -20°C or -80°C. Avoid freeze / thaw cycle. Store undiluted.
Storage buffer	pH: 7.20 Preservative: 0.09% Sodium azide Constituent: 99% PBS
Purity	Protein G purified
Clonality	Monoclonal
Clone number	3E6
Myeloma	Sp2/0-Ag14

Isotype	IgG1
Light chain type	kappa

Applications

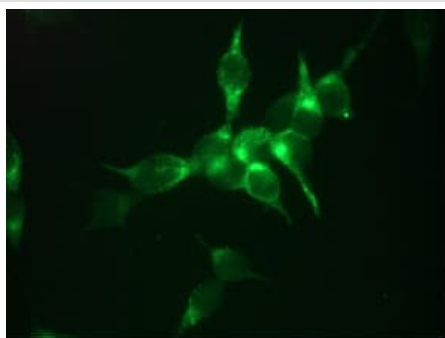
The Abpromise guarantee Our **Abpromise guarantee** covers the use of ab140337 in the following tested applications. The application notes include recommended starting dilutions; optimal dilutions/concentrations should be determined by the end user.

Application	Abreviews	Notes
IHC-P		Use at an assay dependent concentration.
ICC/IF		Use at an assay dependent concentration.

Target

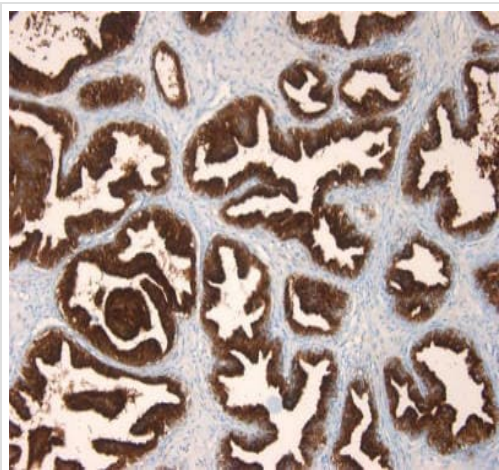
Function	Hydrolyzes semenogelin-1 thus leading to the liquefaction of the seminal coagulum.
Sequence similarities	Belongs to the peptidase S1 family. Kallikrein subfamily. Contains 1 peptidase S1 domain.
Cellular localization	Secreted.

Images



Immunofluorescent analysis of Human LNCaP cells labelling Prostate Specific Antigen (PSA) with ab140337 at dilution 1/100.

Immunocytochemistry/ Immunofluorescence - Anti-Prostate Specific Antigen antibody [3E6] (ab140337)



Immunohistochemical analysis of paraffin-embedded Human prostate tissue labelling Prostate Specific Antigen (PSA) with ab140337 at dilution 1/100

Immunohistochemistry (Formalin/PFA-fixed paraffin-embedded sections) - Anti-Prostate Specific Antigen antibody [3E6] (ab140337)

Please note: All products are "FOR RESEARCH USE ONLY. NOT FOR USE IN DIAGNOSTIC PROCEDURES"

Our Abpromise to you: Quality guaranteed and expert technical support

- Replacement or refund for products not performing as stated on the datasheet
- Valid for 12 months from date of delivery
- Response to your inquiry within 24 hours
- We provide support in Chinese, English, French, German, Japanese and Spanish
- Extensive multi-media technical resources to help you
- We investigate all quality concerns to ensure our products perform to the highest standards

If the product does not perform as described on this datasheet, we will offer a refund or replacement. For full details of the Abpromise, please visit <https://www.abcam.com/abpromise> or contact our technical team.

Terms and conditions

- Guarantee only valid for products bought direct from Abcam or one of our authorized distributors