

# Anti-Prostate Specific Antigen antibody [A67-B/E3] ab2218

[1 References](#) [2 Images](#)

### Overview

---

<b>Product name</b>	Anti-Prostate Specific Antigen antibody [A67-B/E3]
<b>Description</b>	Mouse monoclonal [A67-B/E3] to Prostate Specific Antigen
<b>Host species</b>	Mouse
<b>Specificity</b>	This antibody is specific for PSA.
<b>Tested applications</b>	<b>Suitable for:</b> WB, IHC-P
<b>Species reactivity</b>	<b>Reacts with:</b> Human
<b>Immunogen</b>	Tissue, cells or virus corresponding to Human Prostate Specific Antigen. 30 kDa protein fraction prepared from human seminal plasma
<b>Positive control</b>	WB: Human seminal plasma. IHC-P: Human prostate tissue.
<b>General notes</b>	<p>The Life Science industry has been in the grips of a reproducibility crisis for a number of years. Abcam is leading the way in addressing this with our range of recombinant monoclonal antibodies and knockout edited cell lines for gold-standard validation. Please check that this product meets your needs before purchasing.</p> <p>If you have any questions, special requirements or concerns, please send us an inquiry and/or contact our Support team ahead of purchase. Recommended alternatives for this product can be found below, along with publications, customer reviews and Q&amp;As</p>

### Properties

---

<b>Form</b>	Liquid
<b>Storage instructions</b>	Shipped at 4°C. Store at +4°C short term (1-2 weeks). Upon delivery aliquot. Store at -20°C or -80°C. Avoid freeze / thaw cycle.
<b>Storage buffer</b>	pH: 7.40 Preservative: 0.097% Sodium azide Constituent: PBS
<b>Purity</b>	Protein A purified
<b>Purification notes</b>	Purified from TCS. Purity >95% by SDS-PAGE.
<b>Clonality</b>	Monoclonal
<b>Clone number</b>	A67-B/E3

<b>Myeloma</b>	unknown
<b>Isotype</b>	IgG1
<b>Light chain type</b>	unknown

## Applications

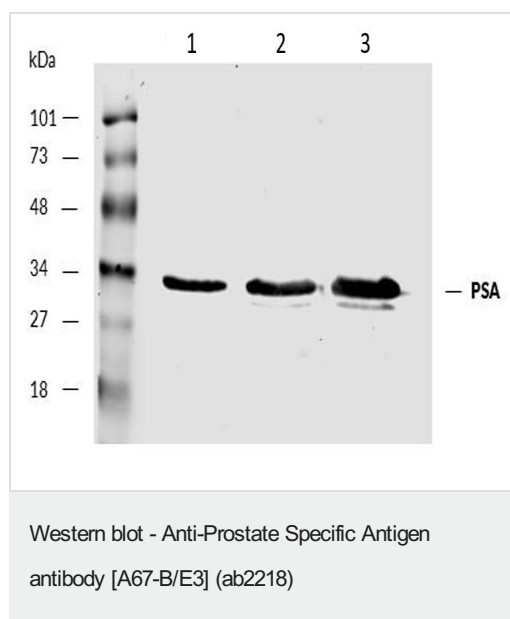
**The Abpromise guarantee** Our **Abpromise guarantee** covers the use of ab2218 in the following tested applications. The application notes include recommended starting dilutions; optimal dilutions/concentrations should be determined by the end user.

Application	Abreviews	Notes
<b>WB</b>		Use a concentration of 2 - 5 µg/ml. Predicted molecular weight: 29 kDa.
<b>IHC-P</b>		Use at an assay dependent concentration. Perform enzymatic antigen retrieval before commencing with IHC staining protocol.

## Target

<b>Function</b>	Hydrolyzes semenogelin-1 thus leading to the liquefaction of the seminal coagulum.
<b>Sequence similarities</b>	Belongs to the peptidase S1 family. Kallikrein subfamily. Contains 1 peptidase S1 domain.
<b>Cellular localization</b>	Secreted.

## Images



**All lanes** : Anti-Prostate Specific Antigen antibody [A67-B/E3] (ab2218) at 5 µg/ml

**All lanes** : Human Seminal Plasma

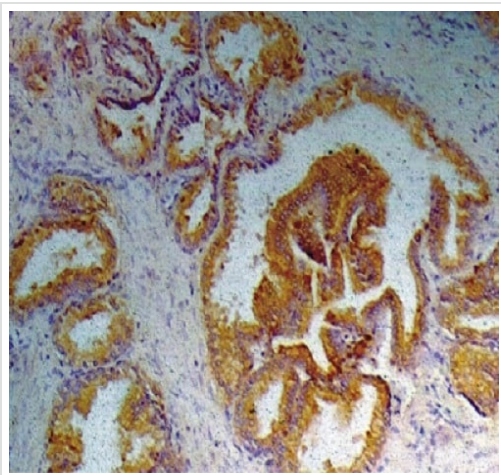
### Secondary

**All lanes** : IRDye800-conjugated Anti-Mouse IgG1 Secondary Antibody

Performed under reducing conditions.

**Predicted band size:** 29 kDa

**Observed band size:** 30 kDa



Immunohistochemical analysis of human prostate tissue sections staining Prostate Specific Antigen with ab2218.

Immunohistochemistry (Formalin/PFA-fixed paraffin-embedded sections) - Anti-Prostate Specific Antigen antibody [A67-B/E3] (ab2218)

**Please note:** All products are "FOR RESEARCH USE ONLY. NOT FOR USE IN DIAGNOSTIC PROCEDURES"

### **Our Abpromise to you: Quality guaranteed and expert technical support**

---

- Replacement or refund for products not performing as stated on the datasheet
- Valid for 12 months from date of delivery
- Response to your inquiry within 24 hours
  
- We provide support in Chinese, English, French, German, Japanese and Spanish
- Extensive multi-media technical resources to help you
- We investigate all quality concerns to ensure our products perform to the highest standards

If the product does not perform as described on this datasheet, we will offer a refund or replacement. For full details of the Abpromise, please visit <https://www.abcam.com/abpromise> or contact our technical team.

### **Terms and conditions**

---

- Guarantee only valid for products bought direct from Abcam or one of our authorized distributors