

Product datasheet

Anti-Prostate Specific Antigen antibody [A67-B/E3] - BSA and Azide free ab212480

[1 Abreviews](#) [1 Image](#)

Overview

Product name	Anti-Prostate Specific Antigen antibody [A67-B/E3] - BSA and Azide free
Description	Mouse monoclonal [A67-B/E3] to Prostate Specific Antigen - BSA and Azide free
Host species	Mouse
Tested applications	Suitable for: IHC-P
Species reactivity	Reacts with: Human
Immunogen	Full length native protein (purified) corresponding to Human Prostate Specific Antigen. PSA p30 from Human sperm plasma Database link: P07288
Positive control	Human prostate carcinoma and prostate tissues.
General notes	<p>The Life Science industry has been in the grips of a reproducibility crisis for a number of years. Abcam is leading the way in addressing this with our range of recombinant monoclonal antibodies and knockout edited cell lines for gold-standard validation. Please check that this product meets your needs before purchasing.</p> <p>If you have any questions, special requirements or concerns, please send us an inquiry and/or contact our Support team ahead of purchase. Recommended alternatives for this product can be found below, along with publications, customer reviews and Q&As</p>

Properties

Form	Liquid
Storage instructions	Shipped at 4°C. Store at +4°C short term (1-2 weeks). Upon delivery aliquot. Store at -20°C long term. Avoid freeze / thaw cycle.
Storage buffer	pH: 7.2 Constituent: 100% PBS
Carrier free	Yes
Purity	Protein A/G purified
Purification notes	ab212480 was purified from Bioreactor Concentrate by Protein A/G.
Clonality	Monoclonal
Clone number	A67-B/E3

Isotype IgG1
Light chain type kappa

Applications

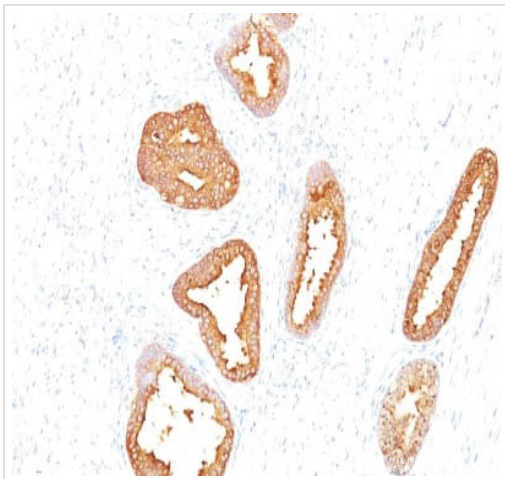
The Abpromise guarantee Our **Abpromise guarantee** covers the use of ab212480 in the following tested applications. The application notes include recommended starting dilutions; optimal dilutions/concentrations should be determined by the end user.

Application	Abreviews	Notes
IHC-P		Use a concentration of 0.25 - 0.5 µg/ml. Perform heat mediated antigen retrieval with citrate buffer pH 6 before commencing with IHC staining protocol. (Primary incubation for 30 minutes at RT).

Target

Function Hydrolyzes semenogelin-1 thus leading to the liquefaction of the seminal coagulum.
Sequence similarities Belongs to the peptidase S1 family. Kallikrein subfamily. Contains 1 peptidase S1 domain.
Cellular localization Secreted.

Images



Immunohistochemical analysis of formalin-fixed, paraffin-embedded Human prostate carcinoma tissue labeling Prostate Specific Antigen with ab212480 at 0.5 µg/ml.

Immunohistochemistry (Formalin/PFA-fixed paraffin-embedded sections) - Anti-Prostate Specific Antigen antibody [A67-B/E3] - BSA and Azide free (ab212480)

Please note: All products are "FOR RESEARCH USE ONLY. NOT FOR USE IN DIAGNOSTIC PROCEDURES"

Our Abpromise to you: Quality guaranteed and expert technical support

- Replacement or refund for products not performing as stated on the datasheet
- Valid for 12 months from date of delivery
- Response to your inquiry within 24 hours

- We provide support in Chinese, English, French, German, Japanese and Spanish
- Extensive multi-media technical resources to help you
- We investigate all quality concerns to ensure our products perform to the highest standards

If the product does not perform as described on this datasheet, we will offer a refund or replacement. For full details of the Abpromise, please visit <https://www.abcam.com/abpromise> or contact our technical team.

Terms and conditions

- Guarantee only valid for products bought direct from Abcam or one of our authorized distributors