


## Product datasheet

# Anti-Proteasome 20S C2/HC2 antibody ab82521

[2 Images](#)

### Overview

<b>Product name</b>	Anti-Proteasome 20S C2/HC2 antibody
<b>Description</b>	Rabbit polyclonal to Proteasome 20S C2/HC2
<b>Host species</b>	Rabbit
<b>Tested applications</b>	<b>Suitable for:</b> WB
<b>Species reactivity</b>	<b>Reacts with:</b> Mouse, Rat, Human <b>Predicted to work with:</b> Cow, Zebrafish, Rainbow trout, Leaf frog, Orangutan, Zebra finch 
<b>Immunogen</b>	Synthetic peptide corresponding to Human Proteasome 20S C2/HC2 aa 1-100 conjugated to keyhole limpet haemocyanin. Database link: <a href="#">P25786</a> (Peptide available as <a href="#">ab93073</a> )
<b>Positive control</b>	Recombinant Human Proteasome 20S C2/HC2 protein ( <a href="#">ab116156</a> ) can be used as a positive control in WB. This antibody gave a positive signal in the following lysates: HeLa whole cell; HepG2 whole cell; Jurkat whole cell; MCF7 whole cell; PC3 whole cell; HEK293 whole cell; human liver tissue; mouse heart tissue; rat heart tissue.
<b>General notes</b>	<p>The Life Science industry has been in the grips of a reproducibility crisis for a number of years. Abcam is leading the way in addressing this with our range of recombinant monoclonal antibodies and knockout edited cell lines for gold-standard validation. Please check that this product meets your needs before purchasing.</p> <p>If you have any questions, special requirements or concerns, please send us an inquiry and/or contact our Support team ahead of purchase. Recommended alternatives for this product can be found below, along with publications, customer reviews and Q&amp;As</p>

### Properties

<b>Form</b>	Liquid
<b>Storage instructions</b>	Shipped at 4°C. Store at +4°C short term (1-2 weeks). Upon delivery aliquot. Store at -20°C or -80°C. Avoid freeze / thaw cycle.
<b>Storage buffer</b>	pH: 7.40 Preservative: 0.02% Sodium azide Constituent: PBS
Batches of this product that have a concentration < 1mg/ml may have BSA added as a stabilising	

agent. If you would like information about the formulation of a specific lot, please contact our scientific support team who will be happy to help.

<b>Purity</b>	Immunogen affinity purified
<b>Clonality</b>	Polyclonal
<b>Isotype</b>	IgG

## Applications

**The Abpromise guarantee** Our **Abpromise guarantee** covers the use of ab82521 in the following tested applications. The application notes include recommended starting dilutions; optimal dilutions/concentrations should be determined by the end user.

Application	Abreviews	Notes
<b>WB</b>		Use a concentration of 1 µg/ml. Detects a band of approximately 30 kDa (predicted molecular weight: 30 kDa).

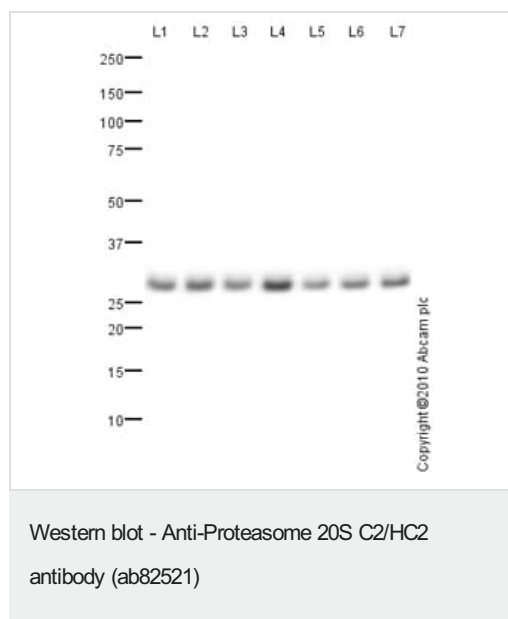
## Target

**Function** The proteasome is a multicatalytic proteinase complex which is characterized by its ability to cleave peptides with Arg, Phe, Tyr, Leu, and Glu adjacent to the leaving group at neutral or slightly basic pH. The proteasome has an ATP-dependent proteolytic activity. Mediates the lipopolysaccharide-induced signal transduction in the macrophage proteasome (By similarity). Might be involved in the anti-inflammatory response of macrophages during the interaction with C.albicans heat-inactivated cells.

**Sequence similarities** Belongs to the peptidase T1A family.

**Cellular localization** Cytoplasm. Nucleus.

## Images



**All lanes :** Anti-Proteasome 20S C2/HC2 antibody (ab82521) at 1 µg/ml

**Lane 1 :** HeLa (Human epithelial carcinoma cell line) Whole Cell Lysate

**Lane 2 :** HepG2 (Human hepatocellular liver carcinoma cell line) Whole Cell Lysate

**Lane 3 :** Human liver tissue lysate - total protein ([ab29889](#))

**Lane 4 :** Jurkat (Human T cell lymphoblast-like cell line) Whole Cell Lysate

**Lane 5 :** MCF7 (Human breast adenocarcinoma cell line) Whole Cell Lysate

**Lane 6 :** PC-3 whole cell lysate ([ab3954](#))

**Lane 7 :** HEK293 (Human embryonic kidney cell line) Whole Cell Lysate

Lysates/proteins at 10 µg per lane.

### Secondary

**All lanes :** Goat polyclonal to Rabbit IgG - H&L - Pre-Adsorbed (HRP) at 1/3000 dilution

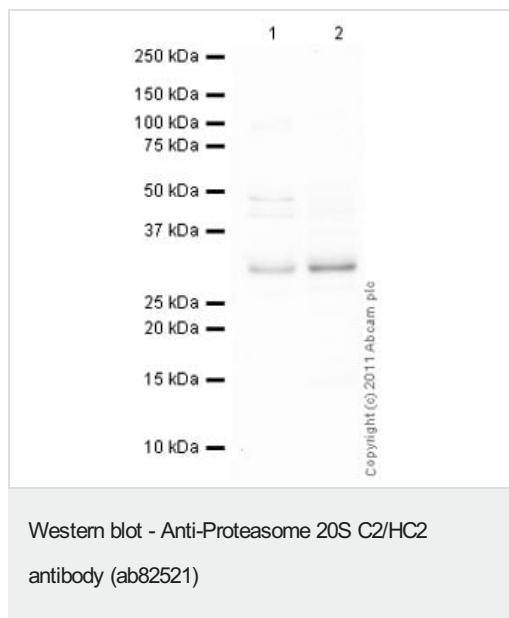
Developed using the ECL technique.

Performed under reducing conditions.

**Predicted band size:** 30 kDa

**Observed band size:** 30 kDa

**Exposure time:** 3 minutes



**All lanes :** Anti-Proteasome 20S C2/HC2 antibody (ab82521) at 1 µg/ml

**Lane 1 :** Heart (Mouse) Tissue Lysate

**Lane 2 :** Heart (Rat) Tissue Lysate

Lysates/proteins at 10 µg per lane.

### Secondary

**All lanes :** Goat Anti-Rabbit IgG H&L (HRP) preadsorbed (**ab97080**) at 1/5000 dilution

Developed using the ECL technique.

Performed under reducing conditions.

**Predicted band size:** 30 kDa

**Observed band size:** 30 kDa

**Additional bands at:** 48 kDa. We are unsure as to the identity of these extra bands.

**Exposure time:** 4 minutes

**Please note:** All products are "FOR RESEARCH USE ONLY. NOT FOR USE IN DIAGNOSTIC PROCEDURES"

### **Our Abpromise to you: Quality guaranteed and expert technical support**

---

- Replacement or refund for products not performing as stated on the datasheet
- Valid for 12 months from date of delivery
- Response to your inquiry within 24 hours
  
- We provide support in Chinese, English, French, German, Japanese and Spanish
- Extensive multi-media technical resources to help you
- We investigate all quality concerns to ensure our products perform to the highest standards

If the product does not perform as described on this datasheet, we will offer a refund or replacement. For full details of the Abpromise, please visit <https://www.abcam.com/abpromise> or contact our technical team.

### **Terms and conditions**

---

- Guarantee only valid for products bought direct from Abcam or one of our authorized distributors