


Product datasheet

Anti-Proteasome 26S S2/PSMD2 antibody ab26078

★★★★★ [1 Abreviews](#) [3 Images](#)

Overview

Product name	Anti-Proteasome 26S S2/PSMD2 antibody
Description	Goat polyclonal to Proteasome 26S S2/PSMD2
Host species	Goat
Specificity	ab26078 recognises Proteasome 26S, subunit S2 .
Tested applications	Suitable for: Flow Cyt (Intra), WB, ICC/IF
Species reactivity	Reacts with: Mouse, Rat, Human Predicted to work with: Pig, Macaque monkey 
Immunogen	Synthetic peptide corresponding to Human Proteasome 26S S2/PSMD2 aa 898-908 (C terminal). Sequence: C VILRKPNPYDL Run BLAST with Run BLAST with
Positive control	Flow Cyt (Intra): HeLa cell.
General notes	<p>The Life Science industry has been in the grips of a reproducibility crisis for a number of years. Abcam is leading the way in addressing this with our range of recombinant monoclonal antibodies and knockout edited cell lines for gold-standard validation. Please check that this product meets your needs before purchasing.</p> <p>If you have any questions, special requirements or concerns, please send us an inquiry and/or contact our Support team ahead of purchase. Recommended alternatives for this product can be found below, along with publications, customer reviews and Q&As</p>

Properties

Form	Liquid
Storage instructions	Shipped at 4°C. Store at +4°C short term (1-2 weeks). Upon delivery aliquot. Store at -20°C or -80°C. Avoid freeze / thaw cycle.
Storage buffer	pH: 7.30 Preservative: 0.02% Sodium azide Constituent: 0.5% BSA
Purity	Immunogen affinity purified

Clonality Polyclonal
Isotype IgG

Applications

The Abpromise guarantee Our **Abpromise guarantee** covers the use of ab26078 in the following tested applications.

The application notes include recommended starting dilutions; optimal dilutions/concentrations should be determined by the end user.

Application	Abreviews	Notes
Flow Cyt (Intra)		Use a concentration of 10 µg/ml.
WB	★★★★★ (1)	Use a concentration of 0.3 - 1 µg/ml. Predicted molecular weight: 100 kDa. 1 hour primary incubation is recommended for this product.
ICC/IF		Use a concentration of 10 µg/ml.

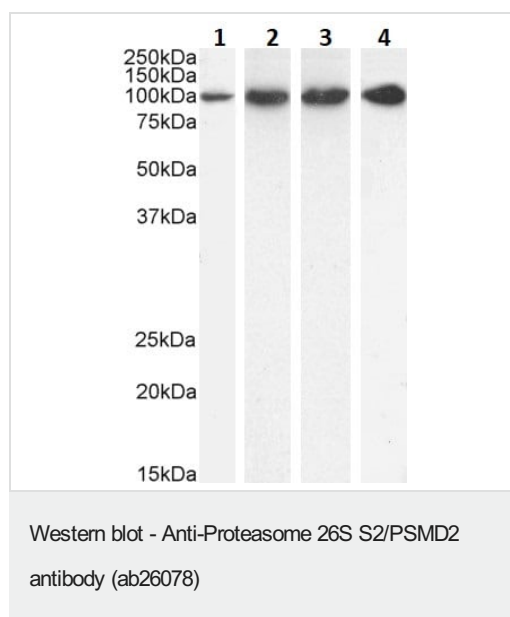
Target

Function Acts as a regulatory subunit of the 26 proteasome which is involved in the ATP-dependent degradation of ubiquitinated proteins.
 Binds to the intracellular domain of tumor necrosis factor type 1 receptor. The binding domain of TRAP1 and TRAP2 resides outside the death domain of TNFR1.

Tissue specificity Found in skeletal muscle, liver, heart, brain, kidney, pancreas, lung and placenta.

Sequence similarities Belongs to the proteasome subunit S2 family.
 Contains 7 PC repeats.

Images



Lanes 1-3 : Anti-Proteasome 26S S2/PSMD2 antibody (ab26078) at 1 µg/ml

Lane 4 : Anti-Proteasome 26S S2/PSMD2 antibody (ab26078) at 0.3 µg/ml

Lane 1 : HeLa cell lysate

Lane 2 : U251 cell lysate

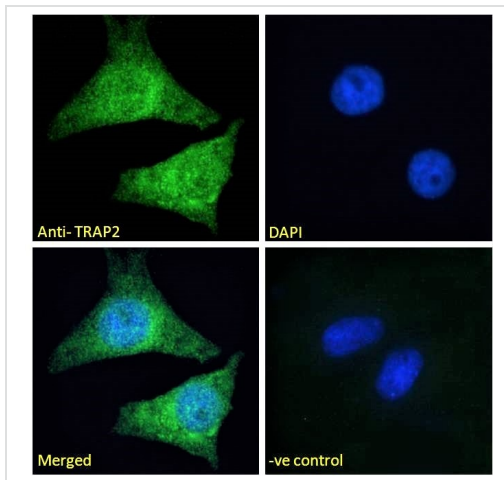
Lane 3 : KNRK cell lysate

Lane 4 : NIH3T3 cell lysate

Lysates/proteins at 35 µg per lane.

Predicted band size: 100 kDa

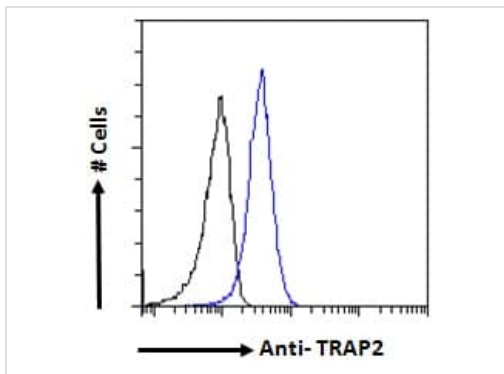
Detected by chemiluminescence.



Immunocytochemistry/ Immunofluorescence - Anti-Proteasome 26S S2/PSMD2 antibody (ab26078)

Immunocytochemistry/ Immunofluorescence analysis of HeLa cell labeling proteasome 26S S2/PSMD2 with ab26078 at 10 µg/mL followed by Alexa Fluor 488 secondary antibody (2µg/mL). Cells were fixed with paraformaldehyde and permeabilized with 0.15% Triton. The nuclei were stained with DAPI (blue). Negative control: Unimmunized goat IgG (10µg/mL) followed by Alexa Fluor 488 secondary antibody (2µg/mL).

Cytoplasmic and some nuclear staining is observed.



Flow Cytometry (Intracellular) - Anti-Proteasome 26S S2/PSMD2 antibody (ab26078)

Flow cytometry analysis of HeLa cell labeling proteasome 26S S2/PSMD2 with ab26078 at 10 µg/mL (blue) followed by Alexa Fluor 488 secondary antibody (1µg/mL) (blue). Cells were fixed with paraformaldehyde and permeabilized with 0.5% Triton.

IgG control: Unimmunized goat IgG (black) followed by Alexa Fluor 488 secondary antibody.

Please note: All products are "FOR RESEARCH USE ONLY. NOT FOR USE IN DIAGNOSTIC PROCEDURES"

Our Abpromise to you: Quality guaranteed and expert technical support

- Replacement or refund for products not performing as stated on the datasheet
- Valid for 12 months from date of delivery
- Response to your inquiry within 24 hours
- We provide support in Chinese, English, French, German, Japanese and Spanish
- Extensive multi-media technical resources to help you
- We investigate all quality concerns to ensure our products perform to the highest standards

If the product does not perform as described on this datasheet, we will offer a refund or replacement. For full details of the Abpromise, please visit <https://www.abcam.com/abpromise> or contact our technical team.

Terms and conditions

- Guarantee only valid for products bought direct from Abcam or one of our authorized distributors