

# Anti-Proteasome 26S S2/PSMD2 antibody ab98865

[3 References](#) [1 Image](#)

### Overview

<b>Product name</b>	Anti-Proteasome 26S S2/PSMD2 antibody
<b>Description</b>	Rabbit polyclonal to Proteasome 26S S2/PSMD2
<b>Host species</b>	Rabbit
<b>Tested applications</b>	<b>Suitable for:</b> WB
<b>Species reactivity</b>	<b>Reacts with:</b> Arabidopsis thaliana
<b>Immunogen</b>	Full length protein corresponding to Proteasome 26S S2/PSMD2.
<b>General notes</b>	<p>The Life Science industry has been in the grips of a reproducibility crisis for a number of years. Abcam is leading the way in addressing this with our range of recombinant monoclonal antibodies and knockout edited cell lines for gold-standard validation. Please check that this product meets your needs before purchasing.</p> <p>If you have any questions, special requirements or concerns, please send us an inquiry and/or contact our Support team ahead of purchase. Recommended alternatives for this product can be found below, along with publications, customer reviews and Q&amp;As</p>

### Properties

<b>Form</b>	Liquid
<b>Storage instructions</b>	Shipped at 4°C. Upon delivery aliquot and store at -20°C. Avoid repeated freeze / thaw cycles.
<b>Storage buffer</b>	Constituent: Whole serum
<b>Purity</b>	Whole antiserum
<b>Clonality</b>	Polyclonal
<b>Isotype</b>	IgG

### Applications

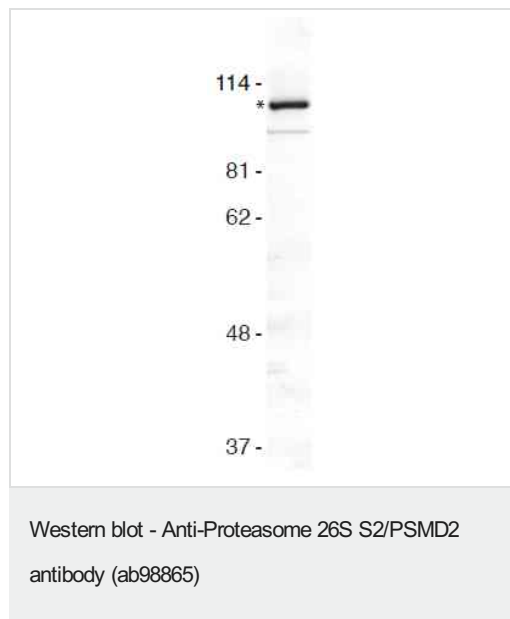
**The Abpromise guarantee** Our **Abpromise guarantee** covers the use of ab98865 in the following tested applications. The application notes include recommended starting dilutions; optimal dilutions/concentrations should be determined by the end user.

Application	Abreviews	Notes
WB		1/1000. Predicted molecular weight: 100 kDa.

## Target

<b>Function</b>	Acts as a regulatory subunit of the 26 proteasome which is involved in the ATP-dependent degradation of ubiquitinated proteins. Binds to the intracellular domain of tumor necrosis factor type 1 receptor. The binding domain of TRAP1 and TRAP2 resides outside the death domain of TNFR1.
<b>Tissue specificity</b>	Found in skeletal muscle, liver, heart, brain, kidney, pancreas, lung and placenta.
<b>Sequence similarities</b>	Belongs to the proteasome subunit S2 family. Contains 7 PC repeats.

## Images



Anti-Proteasome 26S S2/PSMD2 antibody (ab98865) at 1/1000 dilution + Arabidopsis crude plant extracts

**Predicted band size:** 100 kDa

**Observed band size:** 100 kDa

**Please note:** All products are "FOR RESEARCH USE ONLY. NOT FOR USE IN DIAGNOSTIC PROCEDURES"

## Our Abpromise to you: Quality guaranteed and expert technical support

- Replacement or refund for products not performing as stated on the datasheet
- Valid for 12 months from date of delivery
- Response to your inquiry within 24 hours
- We provide support in Chinese, English, French, German, Japanese and Spanish
- Extensive multi-media technical resources to help you
- We investigate all quality concerns to ensure our products perform to the highest standards

If the product does not perform as described on this datasheet, we will offer a refund or replacement. For full details of the Abpromise, please visit <https://www.abcam.com/abpromise> or contact our technical team.

#### **Terms and conditions**

---

- Guarantee only valid for products bought direct from Abcam or one of our authorized distributors