




Product datasheet

Anti-Proteasome Activator Subunit 4/PSME4 antibody ab157158

3 Images

Overview

Product name	Anti-Proteasome Activator Subunit 4/PSME4 antibody
Description	Rabbit polyclonal to Proteasome Activator Subunit 4/PSME4
Host species	Rabbit
Tested applications	Suitable for: IHC-P, WB, IP
Species reactivity	Reacts with: Human Predicted to work with: Chimpanzee 
Immunogen	<p>Synthetic peptide corresponding to Human Proteasome Activator Subunit 4/PSME4 aa 1-50. Sequence:</p> <p>MEPAERAGVGEPPEPGGRPEPGPRGFVPQKEMYNKLLP YAERLDAESDL</p> <p>Database link: NP_055429.2</p> <p> Run BLAST with  Run BLAST with</p>
Positive control	293T, HeLa and Jurkat whole cell lysates.
General notes	<p>The Life Science industry has been in the grips of a reproducibility crisis for a number of years. Abcam is leading the way in addressing this with our range of recombinant monoclonal antibodies and knockout edited cell lines for gold-standard validation. Please check that this product meets your needs before purchasing.</p> <p>If you have any questions, special requirements or concerns, please send us an inquiry and/or contact our Support team ahead of purchase. Recommended alternatives for this product can be found below, along with publications, customer reviews and Q&As</p>

Properties

Form	Liquid
Storage instructions	Shipped at 4°C. Store at +4°C.
Storage buffer	<p>pH: 7</p> <p>Preservative: 0.09% Sodium azide</p> <p>Constituent: 99% Tris citrate/phosphate</p>

	pH 7 to 8
Purity	Immunogen affinity purified
Purification notes	ab157158 was affinity purified using an epitope specific to Proteasome Activator Subunit 4/PSME4 immobilized on solid support.
Clonality	Polyclonal
Isotype	IgG

Applications

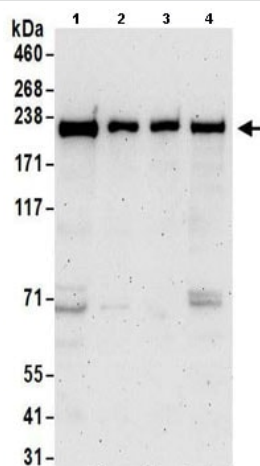
The Abpromise guarantee Our **Abpromise guarantee** covers the use of ab157158 in the following tested applications. The application notes include recommended starting dilutions; optimal dilutions/concentrations should be determined by the end user.

Application	Abreviews	Notes
IHC-P		1/1000.
WB		1/1000 - 1/5000. Predicted molecular weight: 211 kDa.
IP		Use at 2-10 µg/mg of lysate.

Target

Function	Activates proteasomal cleavage of peptides in an energy-independent manner. May be involved in spermatogenesis. May be involved in DNA repair.
Sequence similarities	Contains 6 HEAT repeats.
Cellular localization	Nucleus. Nucleus speckle. Found in nuclear foci following treatment with ionizing radiation, but not with ultraviolet irradiation or H(2).

Images



Western blot - Anti-Proteasome Activator Subunit 4/PSME4 antibody (ab157158)

All lanes : Anti-Proteasome Activator Subunit 4/PSME4 antibody (ab157158) at 0.4 µg/ml

Lane 1 : 293T whole

cell lysate at 50 µg

Lane 2 : 293T whole

cell lysate at 15 µg

Lane 3 : HeLa whole cell lysate at 50 µg

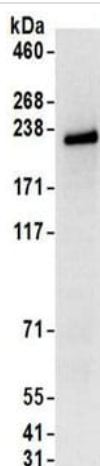
Lane 4 : Jurkat whole

cell lysate at 50 µg

Developed using the ECL technique.

Predicted band size: 211 kDa

Exposure time: 3 minutes



Immunoprecipitation - Anti-Proteasome Activator Subunit 4/PSME4 antibody (ab157158)

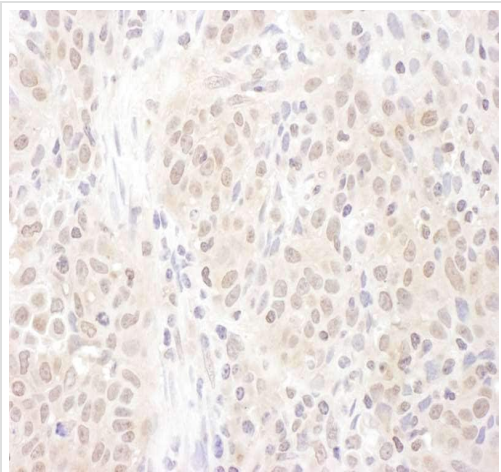
Detection of Proteasome Activator Subunit 4/PSME4 by Western Blot of Immunoprecipitate.

ab157158 at 1µg/ml labeling Proteasome Activator Subunit

4/PSME4 in 293T whole cell lysate immunoprecipitated using

ab157158 at 6µg/mg lysate (1 mg/IP; 20% of IP loaded/lane).

Detection: Chemiluminescence with exposure time of 10 seconds.



Immunohistochemistry of human non-small cell lung cancer staining Proteasome Activator Subunit 4/PSME4 with ab157158 at 1/1000.

Immunohistochemistry (Formalin/PFA-fixed paraffin-embedded sections) - Anti-Proteasome Activator Subunit 4/PSME4 antibody (ab157158)

Please note: All products are "FOR RESEARCH USE ONLY. NOT FOR USE IN DIAGNOSTIC PROCEDURES"

Our Abpromise to you: Quality guaranteed and expert technical support

- Replacement or refund for products not performing as stated on the datasheet
- Valid for 12 months from date of delivery
- Response to your inquiry within 24 hours
- We provide support in Chinese, English, French, German, Japanese and Spanish
- Extensive multi-media technical resources to help you
- We investigate all quality concerns to ensure our products perform to the highest standards

If the product does not perform as described on this datasheet, we will offer a refund or replacement. For full details of the Abpromise, please visit <https://www.abcam.com/abpromise> or contact our technical team.

Terms and conditions

- Guarantee only valid for products bought direct from Abcam or one of our authorized distributors