




## Product datasheet

# Anti-Proteasome Activator Subunit 4/PSME4 antibody ab5620

[3 References](#) [3 Images](#)

### Overview

<b>Product name</b>	Anti-Proteasome Activator Subunit 4/PSME4 antibody
<b>Description</b>	Rabbit polyclonal to Proteasome Activator Subunit 4/PSME4
<b>Host species</b>	Rabbit
<b>Tested applications</b>	<b>Suitable for:</b> ICC/IF, WB
<b>Species reactivity</b>	<b>Reacts with:</b> Mouse, Human <b>Predicted to work with:</b> Zebrafish 
<b>Immunogen</b>	Synthetic peptide corresponding to Human Proteasome Activator Subunit 4/PSME4 aa 1620-1634. Sequence: TKLPKKRKRDPGSVG <div>  <a href="#">Run BLAST with</a>  <a href="#">Run BLAST with</a> </div>
<b>Positive control</b>	WB: Hela, Jurkat whole cell lysate, Mouse testis tissue lysate. ICC: HeLa cells.
<b>General notes</b>	<p>The Life Science industry has been in the grips of a reproducibility crisis for a number of years. Abcam is leading the way in addressing this with our range of recombinant monoclonal antibodies and knockout edited cell lines for gold-standard validation. Please check that this product meets your needs before purchasing.</p> <p>If you have any questions, special requirements or concerns, please send us an inquiry and/or contact our Support team ahead of purchase. Recommended alternatives for this product can be found below, along with publications, customer reviews and Q&amp;As</p>

### Properties

<b>Form</b>	Liquid
<b>Storage instructions</b>	Shipped at 4°C. Store at +4°C short term (1-2 weeks). Upon delivery aliquot. Store at -20°C or -80°C. Avoid freeze / thaw cycle.
<b>Storage buffer</b>	Preservative: 0.05% Sodium azide
<b>Purity</b>	Whole antiserum
<b>Clonality</b>	Polyclonal
<b>Isotype</b>	IgG

## Applications

### The Abpromise guarantee

Our **Abpromise guarantee** covers the use of ab5620 in the following tested applications.

The application notes include recommended starting dilutions; optimal dilutions/concentrations should be determined by the end user.

Application	Abreviews	Notes
ICC/IF		1/600.
WB		1/250 - 1/5000. Detects a band of approximately 200 kDa.

## Target

### Function

Activates proteasomal cleavage of peptides in an energy-independent manner. May be involved in spermatogenesis. May be involved in DNA repair.

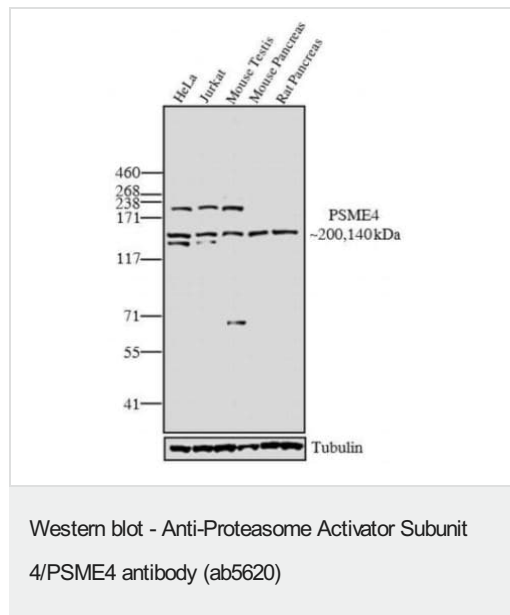
### Sequence similarities

Contains 6 HEAT repeats.

### Cellular localization

Nucleus. Nucleus speckle. Found in nuclear foci following treatment with ionizing radiation, but not with ultraviolet irradiation or H(2).

## Images



**All lanes** : Anti-Proteasome Activator Subunit 4/PSME4 antibody (ab5620) at 1/250 dilution

**Lane 1** : HeLa whole cell extract

**Lane 2** : Jurkat whole cell extract

**Lane 3** : Mouse testis tissue extract

**Lane 4** : Mouse pancreas tissue extract

**Lane 5** : Rat pancreas tissue extract

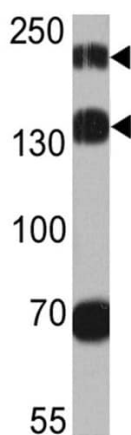
Lysates/proteins at 30 µg per lane.

### Secondary

**All lanes** : Goat anti-Rabbit IgG (H+L) HRP conjugate at 1/4000 dilution

A 200 kDa band corresponding to PSME4 was observed in HeLa, Jurkat, and mouse testis. In addition, a 140 kDa band corresponding to an isoform of PSME4 was observed across the cell lines and tissues tested.

Blocking - 5% skimmed milk



Western blot - Anti-Proteasome Activator Subunit 4/PSME4 antibody (ab5620)

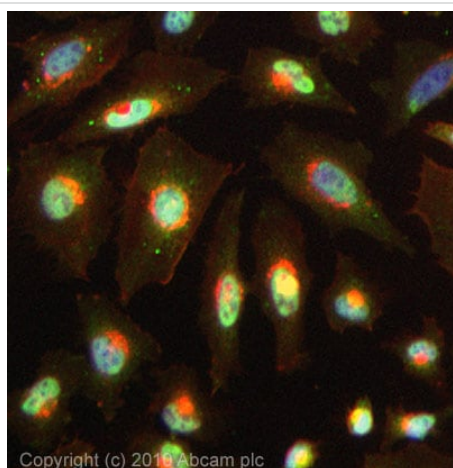
Anti-Proteasome Activator Subunit 4/PSME4 antibody (ab5620) at 1/2000 dilution + Mouse testis tissue lysate at 25 µg

#### Secondary

HRP-conjugated anti-rabbit

Developed using the ECL technique.

**Observed band size:** 160,200 kDa



Immunocytochemistry/ Immunofluorescence - Anti-Proteasome Activator Subunit 4/PSME4 antibody (ab5620)

ICC/IF image of ab5620 stained HeLa cells. The cells were 4% formaldehyde fixed (10 min) and then incubated in 1% BSA / 10% normal goat serum / 0.3M glycine in 0.1% PBS-Tween for 1h to permeabilise the cells and block non-specific protein-protein interactions. The cells were then incubated with the antibody (ab5620, 5µg/ml) overnight at +4°C. The secondary antibody (green) was Alexa Fluor® 488 goat anti-rabbit IgG (H+L) used at a 1/1000 dilution for 1h. Alexa Fluor® 594 WGA was used to label plasma membranes (red) at a 1/200 dilution for 1h. DAPI was used to stain the cell nuclei (blue) at a concentration of 1.43µM.

**Please note:** All products are "FOR RESEARCH USE ONLY. NOT FOR USE IN DIAGNOSTIC PROCEDURES"

#### Our Abpromise to you: Quality guaranteed and expert technical support

- Replacement or refund for products not performing as stated on the datasheet
- Valid for 12 months from date of delivery
- Response to your inquiry within 24 hours
- We provide support in Chinese, English, French, German, Japanese and Spanish
- Extensive multi-media technical resources to help you
- We investigate all quality concerns to ensure our products perform to the highest standards

If the product does not perform as described on this datasheet, we will offer a refund or replacement. For full details of the Abpromise,

please visit <https://www.abcam.com/abpromise> or contact our technical team.

#### **Terms and conditions**

---

- Guarantee only valid for products bought direct from Abcam or one of our authorized distributors