

# Anti-Proteasome Activator Subunit 4/PSME4 antibody [EPR13577(B)] - C-terminal ab181203

Recombinant RabMAb

[1 References](#) [6 Images](#)

### Overview

<b>Product name</b>	Anti-Proteasome Activator Subunit 4/PSME4 antibody [EPR13577(B)] - C-terminal
<b>Description</b>	Rabbit monoclonal [EPR13577(B)] to Proteasome Activator Subunit 4/PSME4 - C-terminal
<b>Host species</b>	Rabbit
<b>Specificity</b>	The mouse and rat recommendation is based on the WB results. We do not guarantee IHC-P for mouse and rat.
<b>Tested applications</b>	<b>Suitable for:</b> WB, IHC-P
<b>Species reactivity</b>	<b>Reacts with:</b> Mouse, Rat, Human
<b>Immunogen</b>	Synthetic peptide. This information is proprietary to Abcam and/or its suppliers.
<b>Positive control</b>	WB: C6, 293T, RAW264.7, HeLa and Jurkat cells; K562, HepG2 and HeLa cell lysates; IHC-P: Human liver, Human pancreas and cardiac muscle tissues.
<b>General notes</b>	<p>This product is a recombinant monoclonal antibody, which offers several advantages including:</p> <ul style="list-style-type: none"> <li>- High batch-to-batch consistency and reproducibility</li> <li>- Improved sensitivity and specificity</li> <li>- Long-term security of supply</li> <li>- Animal-free production</li> </ul> <p>For more information <a href="#">see here</a>.</p> <p>Our RabMAb<sup>®</sup> technology is a patented hybridoma-based technology for making rabbit monoclonal antibodies. For details on our patents, please refer to <a href="#">RabMAb<sup>®</sup> patents</a>.</p>

### Properties

<b>Form</b>	Liquid
<b>Storage instructions</b>	Shipped at 4°C. Store at +4°C short term (1-2 weeks). Upon delivery aliquot. Store at -20°C long term. Avoid freeze / thaw cycle.
<b>Storage buffer</b>	Preservative: 0.01% Sodium azide Constituents: PBS, 40% Glycerol, 0.05% BSA
<b>Purity</b>	Protein A purified
<b>Clonality</b>	Monoclonal

Clone number                      EPR13577(B)  
Isotype                                IgG

## Applications

---

**The Abpromise guarantee**            Our **Abpromise guarantee** covers the use of ab181203 in the following tested applications. The application notes include recommended starting dilutions; optimal dilutions/concentrations should be determined by the end user.

Application	Abreviews	Notes
WB		1/1000. Detects a band of approximately 200 kDa (predicted molecular weight: 211 kDa).
IHC-P		1/1000. Perform heat mediated antigen retrieval with Tris/EDTA buffer pH 9.0 before commencing with IHC staining protocol. See <b>IHC antigen retrieval protocols</b> . The mouse and rat recommendation is based on the WB results. We do not guarantee IHC-P for mouse and rat. <b>For unpurified use at 1/50 - 1/100.</b>

## Target

---

**Function**                                Activates proteasomal cleavage of peptides in an energy-independent manner. May be involved in spermatogenesis. May be involved in DNA repair.

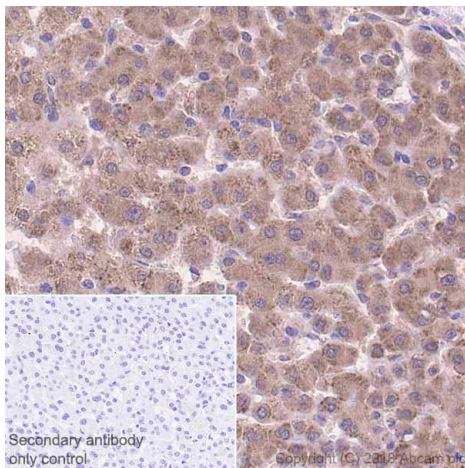
**Sequence similarities**                Contains 6 HEAT repeats.

**Cellular localization**                Nucleus. Nucleus speckle. Found in nuclear foci following treatment with ionizing radiation, but not with ultraviolet irradiation or H(2).

---

## Images

---

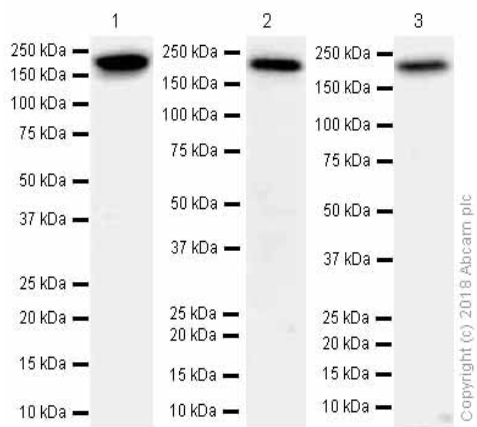


Immunohistochemistry (Formalin/PFA-fixed paraffin-embedded sections) - Anti-Proteasome Activator Subunit 4/PSME4 antibody [EPR13577(B)] - C-terminal (ab181203)

Immunohistochemistry (Formalin/PFA-fixed paraffin-embedded sections) analysis of human liver tissue sections labeling Proteasome Activator Subunit 4/PSME4 with purified ab181203 at 1:1000 dilution (0.59 µg/ml). Heat mediated antigen retrieval was performed using **ab93684** (Tris/EDTA buffer, pH 9.0). ImmunoHistoProbe one step HRP Polymer (ready to use) was used as the secondary antibody.

**Negative control:** PBS instead of the primary antibody.

Hematoxylin was used as a counterstain.



Western blot - Anti-Proteasome Activator Subunit 4/PSME4 antibody [EPR13577(B)] - C-terminal (ab181203)

**All lanes :** Anti-Proteasome Activator Subunit 4/PSME4 antibody [EPR13577(B)] - C-terminal (ab181203) at 0.6 µg/ml

**Lane 1 :** 293T (Human embryonic kidney epithelial cell) whole cell lysates

**Lane 2 :** RAW264.7 (Mouse Abelson murine leukemia virus-induced tumor macrophage) whole cell lysates

**Lane 3 :** C6 (Rat glial tumor glial cell) whole cell lysates

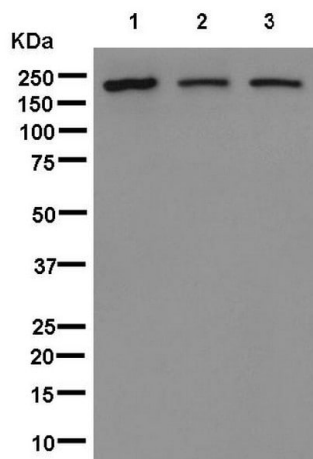
Lysates/proteins at 15 µg per lane.

**Secondary**

**All lanes :** Goat Anti-Rabbit IgG H&L (HRP) (**ab97051**) at 1/20000 dilution

**Predicted band size:** 211 kDa

Blocking and diluting buffer: 5% NFDN/TBST



Western blot - Anti-Proteasome Activator Subunit 4/PSME4 antibody [EPR13577(B)] - C-terminal (ab181203)

**All lanes** : Anti-Proteasome Activator Subunit 4/PSME4 antibody [EPR13577(B)] - C-terminal (ab181203) at 1/1000 dilution (Unpurified)

**Lane 1** : K562 cell line lysate

**Lane 2** : HeLa cell line lysate

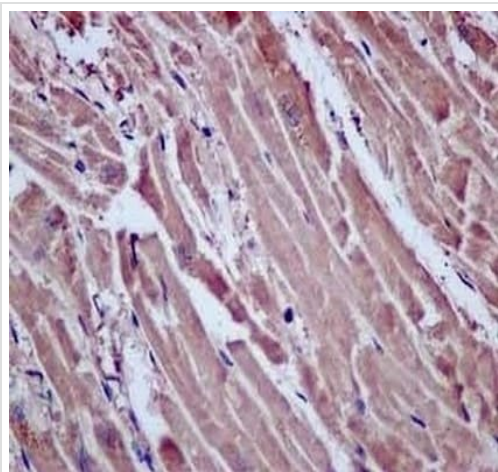
**Lane 3** : HepG2 cell line lysate

Lysates/proteins at 20 µg per lane.

### Secondary

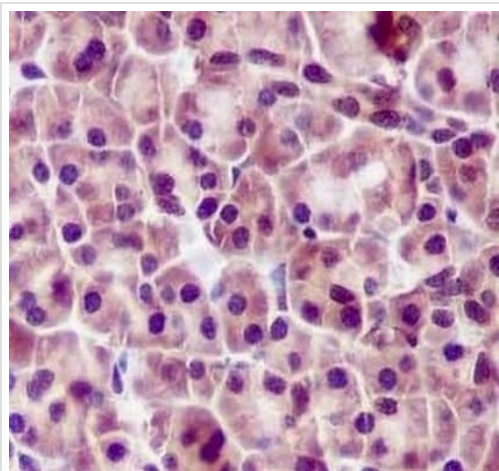
**All lanes** : Goat Anti-Rabbit IgG, (H+L), Peroxidase conjugated antibody at 1/1000 dilution

**Predicted band size:** 211 kDa



Immunohistochemistry (Formalin/PFA-fixed paraffin-embedded sections) - Anti-Proteasome Activator Subunit 4/PSME4 antibody [EPR13577(B)] - C-terminal (ab181203)

Immunohistochemical analysis of paraffin-embedded Human cardiac muscle tissue labeling unpurified Proteasome Activator Subunit 4/PSME4 with ab181203 at 1/100 dilution followed by pre-diluted HRP-conjugated secondary antibody and counter-stained with Hematoxylin.



Immunohistochemical analysis of paraffin-embedded Human pancreas tissue labeling Proteasome Activator Subunit 4/PSME4 with unpurified ab181203 at 1/100 dilution followed by pre-diluted HRP-conjugated secondary antibody and counter-stained with Hematoxylin.

Immunohistochemistry (Formalin/PFA-fixed paraffin-embedded sections) - Anti-Proteasome Activator Subunit 4/PSME4 antibody [EPR13577(B)] - C-terminal (ab181203)

### Why choose a recombinant antibody?



**Research with confidence**  
Consistent and reproducible results



**Long-term and scalable supply**  
Recombinant technology



**Success from the first experiment**  
Confirmed specificity



**Ethical standards compliant**  
Animal-free production

Anti-Proteasome Activator Subunit 4/PSME4 antibody [EPR13577(B)] - C-terminal (ab181203)

**Please note:** All products are "FOR RESEARCH USE ONLY. NOT FOR USE IN DIAGNOSTIC PROCEDURES"

### Our Abpromise to you: Quality guaranteed and expert technical support

- Replacement or refund for products not performing as stated on the datasheet
- Valid for 12 months from date of delivery
- Response to your inquiry within 24 hours

- We provide support in Chinese, English, French, German, Japanese and Spanish
- Extensive multi-media technical resources to help you
- We investigate all quality concerns to ensure our products perform to the highest standards

If the product does not perform as described on this datasheet, we will offer a refund or replacement. For full details of the Abpromise, please visit <https://www.abcam.com/abpromise> or contact our technical team.

### **Terms and conditions**

---

- Guarantee only valid for products bought direct from Abcam or one of our authorized distributors