


## Product datasheet

# Anti-Proteasome subunit alpha type 6 antibody [EPR5835] ab109377

Recombinant RabMAb

★★★★★ [1 Abreviews](#) [7 References](#) [3 Images](#)

### Overview

<b>Product name</b>	Anti-Proteasome subunit alpha type 6 antibody [EPR5835]
<b>Description</b>	Rabbit monoclonal [EPR5835] to Proteasome subunit alpha type 6
<b>Host species</b>	Rabbit
<b>Tested applications</b>	<b>Suitable for:</b> WB, IHC-P <b>Unsuitable for:</b> IP
<b>Species reactivity</b>	<b>Reacts with:</b> Human <b>Predicted to work with:</b> Mouse, Rat 
<b>Immunogen</b>	Synthetic peptide. This information is proprietary to Abcam and/or its suppliers.
<b>Positive control</b>	WB: HepG2, 293T, HeLa and Jurkat cell lysates IHC-P: Human colon tissue
<b>General notes</b>	This product is a recombinant monoclonal antibody, which offers several advantages including: <ul style="list-style-type: none"><li>- High batch-to-batch consistency and reproducibility</li><li>- Improved sensitivity and specificity</li><li>- Long-term security of supply</li><li>- Animal-free production</li></ul> For more information <a href="#">see here</a> . Our RabMAb <sup>®</sup> technology is a patented hybridoma-based technology for making rabbit monoclonal antibodies. For details on our patents, please refer to <a href="#">RabMAb<sup>®</sup> patents</a> .

### Properties

<b>Form</b>	Liquid
<b>Storage instructions</b>	Shipped at 4°C. Store at -20°C. Stable for 12 months at -20°C.
<b>Storage buffer</b>	pH: 7.20 Preservative: 0.05% Sodium azide Constituents: 0.1% BSA, 40% Glycerol (glycerin, glycerine), 9.85% Tris glycine, 50% Tissue culture supernatant
<b>Purity</b>	Protein A purified
<b>Clonality</b>	Monoclonal

Clone number EPR5835  
Isotype IgG

## Applications

**The Abpromise guarantee** Our **Abpromise guarantee** covers the use of ab109377 in the following tested applications. The application notes include recommended starting dilutions; optimal dilutions/concentrations should be determined by the end user.

Application	Abreviews	Notes
WB	★★★★★ (1)	1/50000 - 1/200000. Detects a band of approximately 27 kDa (predicted molecular weight: 27 kDa).
IHC-P		1/250 - 1/500. Perform heat mediated antigen retrieval before commencing with IHC staining protocol. Heat up to 98 °C, below boiling, and then let cool for 10-20 minutes.

**Application notes** Is unsuitable for IP.

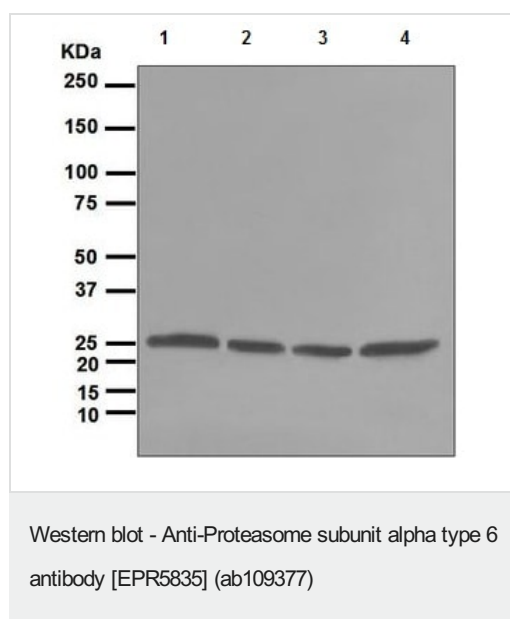
## Target

**Function** The proteasome is a multicatalytic proteinase complex which is characterized by its ability to cleave peptides with Arg, Phe, Tyr, Leu, and Glu adjacent to the leaving group at neutral or slightly basic pH. The proteasome has an ATP-dependent proteolytic activity.

**Sequence similarities** Belongs to the peptidase T1A family.

**Cellular localization** Cytoplasm. Nucleus.

## Images



**All lanes** : Anti-Proteasome subunit alpha type 6 antibody [EPR5835] (ab109377) at 1/50000 dilution

**Lane 1** : HepG2 cell lysate

**Lane 2** : 293T cell lysate

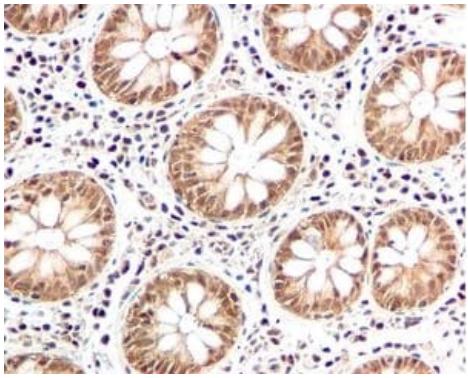
**Lane 3** : HeLa cell lysate

**Lane 4** : Jurkat cell lysate

Lysates/proteins at 10 µg per lane.

**Predicted band size:** 27 kDa

**Observed band size:** 27 kDa



ab109377, at a 1/250 dilution, staining Proteasome 20S alpha 6 in paraffin embedded Human colon tissue by Immunohistochemistry.

Perform heat mediated antigen retrieval before commencing with IHC staining protocol.

Immunohistochemistry (Formalin/PFA-fixed paraffin-embedded sections) - Anti-Proteasome subunit alpha type 6 antibody [EPR5835] (ab109377)

### Why choose a recombinant antibody?



**Research with confidence**  
Consistent and reproducible results



**Long-term and scalable supply**  
Recombinant technology



**Success from the first experiment**  
Confirmed specificity



**Ethical standards compliant**  
Animal-free production

Anti-Proteasome subunit alpha type 6 antibody [EPR5835] (ab109377)

**Please note:** All products are "FOR RESEARCH USE ONLY. NOT FOR USE IN DIAGNOSTIC PROCEDURES"

### Our Abpromise to you: Quality guaranteed and expert technical support

- Replacement or refund for products not performing as stated on the datasheet
- Valid for 12 months from date of delivery
- Response to your inquiry within 24 hours
- We provide support in Chinese, English, French, German, Japanese and Spanish
- Extensive multi-media technical resources to help you
- We investigate all quality concerns to ensure our products perform to the highest standards

If the product does not perform as described on this datasheet, we will offer a refund or replacement. For full details of the Abpromise, please visit <https://www.abcam.com/abpromise> or contact our technical team.

## Terms and conditions

---

- Guarantee only valid for products bought direct from Abcam or one of our authorized distributors