


## Product datasheet

# Anti-Proteasome subunit beta type 2/PSMB2 antibody [EPR8827] ab137108

Recombinant RabMAb

★★★★★ [4 Abreviews](#) [1 References](#) [3 Images](#)

### Overview

<b>Product name</b>	Anti-Proteasome subunit beta type 2/PSMB2 antibody [EPR8827]
<b>Description</b>	Rabbit monoclonal [EPR8827] to Proteasome subunit beta type 2/PSMB2
<b>Host species</b>	Rabbit
<b>Tested applications</b>	<b>Suitable for:</b> IHC-P, WB <b>Unsuitable for:</b> ICC/IF
<b>Species reactivity</b>	<b>Reacts with:</b> Human <b>Predicted to work with:</b> Mouse, Rat 
<b>Immunogen</b>	Synthetic peptide within Human Proteasome subunit beta type 2/PSMB2 aa 100-200. The exact sequence is proprietary. Database link: <a href="#">P49721</a>
<b>Positive control</b>	HeLa, HepG2, Caco-2 and Jurkat cell lysates. Breast carcinoma tissue.
<b>General notes</b>	This product is a recombinant monoclonal antibody, which offers several advantages including: <ul style="list-style-type: none"><li>- High batch-to-batch consistency and reproducibility</li><li>- Improved sensitivity and specificity</li><li>- Long-term security of supply</li><li>- Animal-free production</li></ul> For more information <a href="#">see here</a> . Our RabMAb <sup>®</sup> technology is a patented hybridoma-based technology for making rabbit monoclonal antibodies. For details on our patents, please refer to <a href="#">RabMAb<sup>®</sup> patents</a> .

### Properties

<b>Form</b>	Liquid
<b>Storage instructions</b>	Shipped at 4°C. Store at -20°C.
<b>Storage buffer</b>	pH: 7.2 Preservative: 0.01% Sodium azide Constituents: 9% PBS, 40% Glycerol (glycerin, glycerine), 0.05% BSA, 50% Tissue culture supernatant

<b>Purity</b>	Protein A purified
<b>Clonality</b>	Monoclonal
<b>Clone number</b>	EPR8827
<b>Isotype</b>	IgG

## Applications

**The Abpromise guarantee** Our **Abpromise guarantee** covers the use of ab137108 in the following tested applications.

The application notes include recommended starting dilutions; optimal dilutions/concentrations should be determined by the end user.

Application	Abreviews	Notes
IHC-P		1/50 - 1/100. Perform heat mediated antigen retrieval with citrate buffer pH 6 before commencing with IHC staining protocol.
WB	★★★★★ (2)	1/1000 - 1/10000. Predicted molecular weight: 23 kDa.

**Application notes** Is unsuitable for ICC/IF.

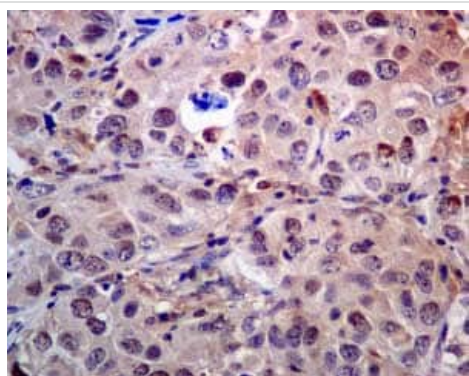
## Target

**Function** The proteasome is a multicatalytic proteinase complex which is characterized by its ability to cleave peptides with Arg, Phe, Tyr, Leu, and Glu adjacent to the leaving group at neutral or slightly basic pH. The proteasome has an ATP-dependent proteolytic activity. This subunit has a trypsin-like activity.

**Sequence similarities** Belongs to the peptidase T1B family.

**Cellular localization** Cytoplasm. Nucleus.

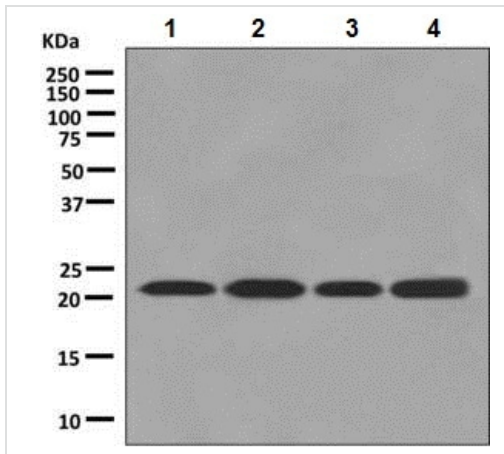
## Images



Immunohistochemical analysis of paraffin-embedded breast carcinoma tissue labelling Proteasome subunit beta type 2/PSMB2 with ab137108 at 1/50 dilution.

Perform heat mediated antigen retrieval with citrate buffer pH 6 before commencing with IHC staining protocol.

Immunohistochemistry (Formalin/PFA-fixed paraffin-embedded sections) - Anti-Proteasome subunit beta type 2/PSMB2 antibody [EPR8827] (ab137108)



Western blot - Anti-Proteasome subunit beta type 2/PSMB2 antibody [EPR8827] (ab137108)

**All lanes :** Anti-Proteasome subunit beta type 2/PSMB2 antibody [EPR8827] (ab137108) at 1/1000 dilution

**Lane 1 :** HeLa cell lysate

**Lane 2 :** HepG2 cell lysate

**Lane 3 :** Caco-2 cell lysate

**Lane 4 :** Jurkat cell lysate





Lysates/proteins at 10 µg per lane.

**Secondary**

**All lanes :** HRP-labelled Goat anti-Rabbit at 1/2000 dilution

**Predicted band size:** 23 kDa

Why choose a recombinant antibody?

 <b>Research with confidence</b> Consistent and reproducible results	 <b>Long-term and scalable supply</b> Recombinant technology
 <b>Success from the first experiment</b> Confirmed specificity	 <b>Ethical standards compliant</b> Animal-free production

Anti-Proteasome subunit beta type 2/PSMB2 antibody [EPR8827] (ab137108)

**Please note:** All products are "FOR RESEARCH USE ONLY. NOT FOR USE IN DIAGNOSTIC PROCEDURES"

**Our Abpromise to you: Quality guaranteed and expert technical support**

- Replacement or refund for products not performing as stated on the datasheet
- Valid for 12 months from date of delivery
- Response to your inquiry within 24 hours
- We provide support in Chinese, English, French, German, Japanese and Spanish
- Extensive multi-media technical resources to help you
- We investigate all quality concerns to ensure our products perform to the highest standards

If the product does not perform as described on this datasheet, we will offer a refund or replacement. For full details of the Abpromise,

please visit <https://www.abcam.com/abpromise> or contact our technical team.

## **Terms and conditions**

---

- Guarantee only valid for products bought direct from Abcam or one of our authorized distributors