

Anti-Protein A antibody ab181627

[1 References](#) [1 Image](#)

Overview

Product name	Anti-Protein A antibody
Description	Goat polyclonal to Protein A
Host species	Goat
Tested applications	Suitable for: IHC-P, WB
Species reactivity	Reacts with: Staphylococcus aureus
Immunogen	Full length native protein (purified) corresponding to Protein A. Database link: P02976
Positive control	Protein A
General notes	<p>The Life Science industry has been in the grips of a reproducibility crisis for a number of years. Abcam is leading the way in addressing this with our range of recombinant monoclonal antibodies and knockout edited cell lines for gold-standard validation. Please check that this product meets your needs before purchasing.</p> <p>If you have any questions, special requirements or concerns, please send us an inquiry and/or contact our Support team ahead of purchase. Recommended alternatives for this product can be found below, along with publications, customer reviews and Q&As</p>

Properties

Form	Liquid
Storage instructions	Shipped at 4°C. Store at +4°C short term (1-2 weeks). Upon delivery aliquot. Store at -20°C long term. Avoid freeze / thaw cycle.
Storage buffer	Preservative: 0.01% Sodium azide Constituents: 0.27% Potassium phosphate, 0.88% Sodium chloride
Purity	IgG fraction
Purification notes	ab181627 was purified from monospecific antiserum by a multi-step process which includes delipidation, salt fractionation and ion exchange chromatography followed by extensive dialysis against the buffer stated above.
Clonality	Polyclonal
Isotype	IgG

Applications

The Abpromise guarantee

Our **Abpromise guarantee** covers the use of ab181627 in the following tested applications.

The application notes include recommended starting dilutions; optimal dilutions/concentrations should be determined by the end user.

Application	Abreviews	Notes
IHC-P		1/1000 - 1/5000.
WB		1/2000 - 1/10000. Detects a band of approximately 50 kDa (predicted molecular weight: 56 kDa).

Target

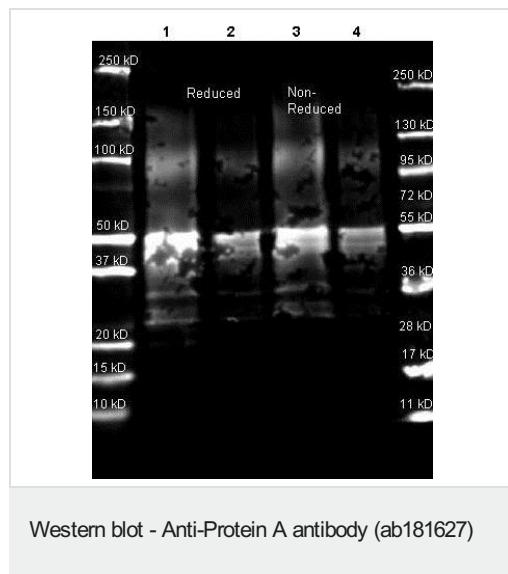
Relevance

Protein A is a surface protein of *S.aureus* which binds IgG molecules by their Fc region. In serum, the bacteria will bind IgG molecules in the wrong orientation on their surface which hinders opsonization and phagocytosis. Mutants of *S. aureus* lacking protein A are more efficiently phagocytosed in vitro, and mutants in infection models have diminished virulence. Due to its affinity for the Fc region of many mammalian immunoglobulins, protein A is considered a universal reagent in biochemistry and immunology.

Cellular localization

Secreted; cell wall.

Images



All lanes : Anti-Protein A antibody (ab181627) at 1/5000 dilution

Lane 1 : Protein A reduced at 1 µg

Lane 2 : Protein A reduced at 0.25 µg

Lane 3 : Protein A non reduced at 1 µg

Lane 4 : Protein A non reduced at 0.25 µg

Secondary

All lanes : DyLight™ 649 donkey anti-goat (pre-adsorbed)

secondary antibody at 1/10000 dilution

Predicted band size: 56 kDa

Observed band size: 50 kDa

Please note: All products are "FOR RESEARCH USE ONLY. NOT FOR USE IN DIAGNOSTIC PROCEDURES"

Our Abpromise to you: Quality guaranteed and expert technical support

- Replacement or refund for products not performing as stated on the datasheet
- Valid for 12 months from date of delivery

- Response to your inquiry within 24 hours
- We provide support in Chinese, English, French, German, Japanese and Spanish
- Extensive multi-media technical resources to help you
- We investigate all quality concerns to ensure our products perform to the highest standards

If the product does not perform as described on this datasheet, we will offer a refund or replacement. For full details of the Abpromise, please visit <https://www.abcam.com/abpromise> or contact our technical team.

Terms and conditions

- Guarantee only valid for products bought direct from Abcam or one of our authorized distributors