


Product datasheet

Anti-Protein phosphatase 1 inhibitor subunit 2 antibody ab73948

[2 Images](#)

Overview

Product name	Anti-Protein phosphatase 1 inhibitor subunit 2 antibody
Description	Rabbit polyclonal to Protein phosphatase 1 inhibitor subunit 2
Host species	Rabbit
Tested applications	Suitable for: WB, IHC-P
Species reactivity	Reacts with: Human Predicted to work with: Mouse, Rat 
Immunogen	Synthetic non-phosphopeptide derived from human Protein phosphatase 1 inhibitor subunit 2 around the phosphorylation site of serine 120 and serine 121 (Q-E-S ^P -S ^P -G-E).
Positive control	Human breast carcinoma tissue. Extracts from Jurkat cells.
General notes	<p>The Life Science industry has been in the grips of a reproducibility crisis for a number of years. Abcam is leading the way in addressing this with our range of recombinant monoclonal antibodies and knockout edited cell lines for gold-standard validation. Please check that this product meets your needs before purchasing.</p> <p>If you have any questions, special requirements or concerns, please send us an inquiry and/or contact our Support team ahead of purchase. Recommended alternatives for this product can be found below, along with publications, customer reviews and Q&As</p>

Properties

Form	Liquid
Storage instructions	Shipped at 4°C. Store at -20°C. Stable for 12 months at -20°C.
Storage buffer	<p>pH: 7.40</p> <p>Preservative: 0.02% Sodium azide</p> <p>Constituents: 50% Glycerol (glycerin, glycerine), 0.87% Sodium chloride, PBS</p> <p>Without Mg²⁺ and Ca²⁺</p>
Purity	Immunogen affinity purified
Clonality	Polyclonal
Isotype	IgG

Applications

The Abpromise guarantee

Our **Abpromise guarantee** covers the use of ab73948 in the following tested applications.

The application notes include recommended starting dilutions; optimal dilutions/concentrations should be determined by the end user.

Application	Abreviews	Notes
WB		1/500 - 1/1000. Detects a band of approximately 25 kDa (predicted molecular weight: 23 kDa).
IHC-P		1/50 - 1/100.

Target

Function

Inhibitor of protein-phosphatase 1.

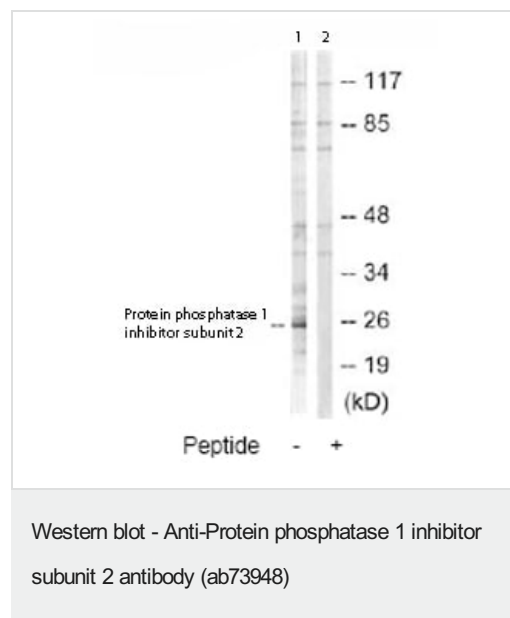
Sequence similarities

Belongs to the protein phosphatase inhibitor 2 family.

Post-translational modifications

Phosphorylation on Thr-73 by GSK3 activates PP1 by dissociating the PP1-PPP1R2 complex (By similarity). Phosphorylation on Ser-44 by ATM activates PP1 by dissociating the PP1-PPP1R2 complex.

Images



All lanes : Anti-Protein phosphatase 1 inhibitor subunit 2 antibody (ab73948) at 1/500 dilution

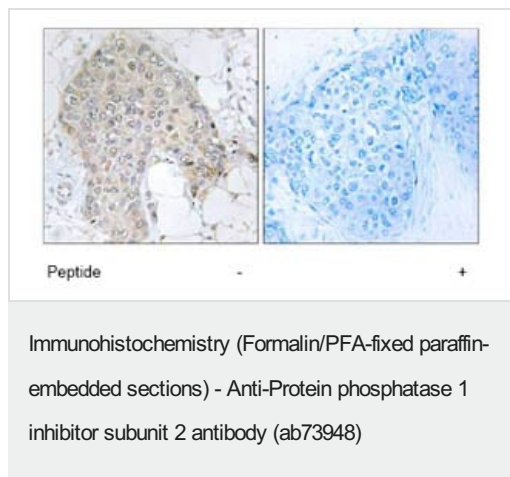
Lane 1 : Extracts from Jurkat cells

Lane 2 : Extracts from Jurkat cells with immunising peptide at 5 µg

Lysates/proteins at 5 µg per lane.

Predicted band size: 23 kDa

Observed band size: 25 kDa



Immunohistochemistry analysis of paraffin-embedded human breast carcinoma tissue using ab73948, at 1/50 dilution, in the presence (right panel) or absence (left panel) of immunising peptide.

Please note: All products are "FOR RESEARCH USE ONLY. NOT FOR USE IN DIAGNOSTIC PROCEDURES"

Our Abpromise to you: Quality guaranteed and expert technical support

- Replacement or refund for products not performing as stated on the datasheet
- Valid for 12 months from date of delivery
- Response to your inquiry within 24 hours
- We provide support in Chinese, English, French, German, Japanese and Spanish
- Extensive multi-media technical resources to help you
- We investigate all quality concerns to ensure our products perform to the highest standards

If the product does not perform as described on this datasheet, we will offer a refund or replacement. For full details of the Abpromise, please visit <https://www.abcam.com/abpromise> or contact our technical team.

Terms and conditions

- Guarantee only valid for products bought direct from Abcam or one of our authorized distributors