

Product datasheet

Anti-Protein phosphatase 1 inhibitor subunit 2 (phospho T72) antibody ab27850

[1 References](#) [3 Images](#)

Overview

Product name	Anti-Protein phosphatase 1 inhibitor subunit 2 (phospho T72) antibody
Description	Rabbit polyclonal to Protein phosphatase 1 inhibitor subunit 2 (phospho T72)
Host species	Rabbit
Specificity	ab27850 recognises Inhibitor-2.
Tested applications	Suitable for: WB, ICC/IF
Species reactivity	Reacts with: Human
Immunogen	Synthetic peptide corresponding to Human Protein phosphatase 1 inhibitor subunit 2 (phospho T72).
Positive control	ICC/IF: A431 cells treated with Nocodazole and HeLa cells; WB: HCT116, HT 29, HEL 92.1.7 and HeLa whole cell lysates.
General notes	<p>The Life Science industry has been in the grips of a reproducibility crisis for a number of years. Abcam is leading the way in addressing this with our range of recombinant monoclonal antibodies and knockout edited cell lines for gold-standard validation. Please check that this product meets your needs before purchasing.</p> <p>If you have any questions, special requirements or concerns, please send us an inquiry and/or contact our Support team ahead of purchase. Recommended alternatives for this product can be found below, along with publications, customer reviews and Q&As</p>

Properties

Form	Liquid
Storage instructions	Shipped at 4°C. Store at +4°C short term (1-2 weeks). Upon delivery aliquot. Store at -20°C long term.
Storage buffer	<p>pH: 7.30</p> <p>Preservative: 0.05% Sodium azide</p> <p>Constituents: 50% Glycerol (glycerin, glycerine), 0.1% BSA</p>
Purity	<p>1.0 mg/mL BSA (IgG, protease free), Dulbecco's PBS [without magnesium and calcium ions]</p> <p>Immunogen affinity purified</p>

Purification notes

The antibody was purified from rabbit serum by sequential epitope-specific chromatography. The antibody has been negatively preadsorbed using a non-phosphopeptide corresponding to the site of phosphorylation to remove antibody that is reactive with non-phosphorylated Inhibitor-2. The final product is generated by affinity chromatography using an Inhibitor-2 -derived peptide that is phosphorylated at threonine 72.

Clonality

Polyclonal

Isotype

IgG

Applications

The Abpromise guarantee

Our **Abpromise guarantee** covers the use of ab27850 in the following tested applications.

The application notes include recommended starting dilutions; optimal dilutions/concentrations should be determined by the end user.

Application	Abreviews	Notes
WB		1/1000. Predicted molecular weight: 23 kDa.
ICC/IF		1/250.

Target

Function

Inhibitor of protein-phosphatase 1.

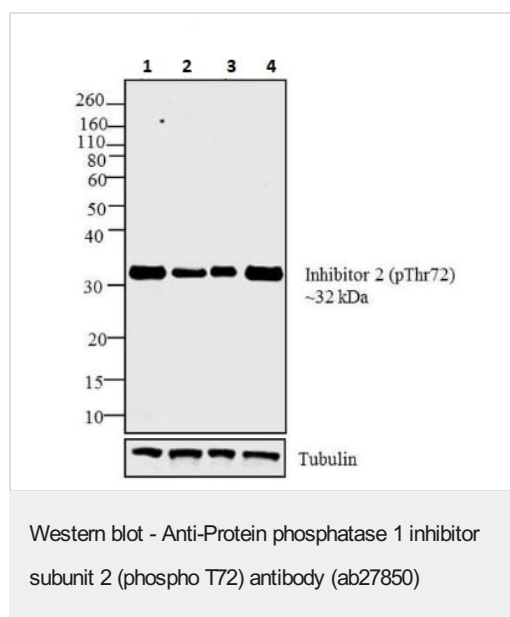
Sequence similarities

Belongs to the protein phosphatase inhibitor 2 family.

Post-translational modifications

Phosphorylation on Thr-73 by GSK3 activates PP1 by dissociating the PP1-PPP1R2 complex (By similarity). Phosphorylation on Ser-44 by ATM activates PP1 by dissociating the PP1-PPP1R2 complex.

Images



All lanes : Anti-Protein phosphatase 1 inhibitor subunit 2 (phospho T72) antibody (ab27850) at 1/1000 dilution

Lane 1 : HCT 116 whole cell lysate

Lane 2 : HT 29 whole cell lysate

Lane 3 : HeL 92.1.7 whole cell lysate

Lane 4 : HeLa whole cell lysate

Lysates/proteins at 30 µg per lane.

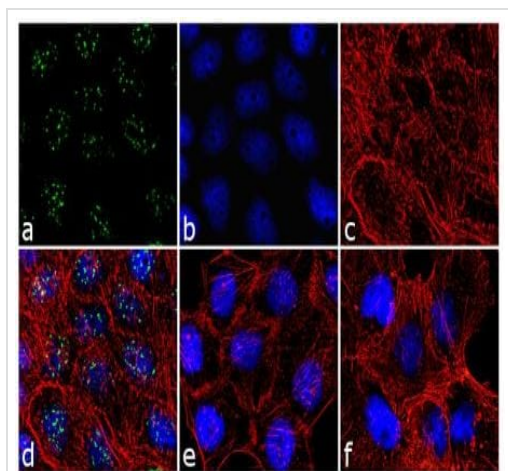
Secondary

All lanes : Goat Anti-Rabbit IgG Secondary Antibody at 1/5000 dilution

Developed using the ECL technique.

Predicted band size: 23 kDa

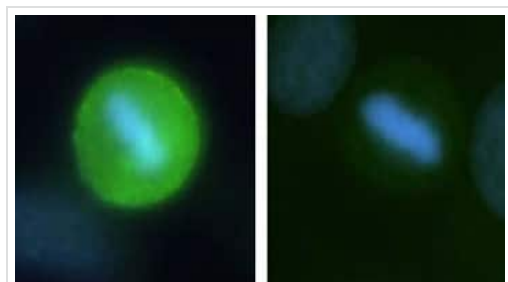
Observed band size: 32 kDa



Immunocytochemistry/ Immunofluorescence - Anti-Protein phosphatase 1 inhibitor subunit 2 (phospho T72) antibody (ab27850)

Immunocytochemistry/Immunofluorescent analysis of A431 cells treated with Nocodazole for 24 hours, staining Protein phosphatase 1 inhibitor subunit 2 at 1/250 dilution, followed by Goat anti-Rabbit IgG (H+L) Superclonal™ Secondary Antibody, Alexa Fluor® 488 conjugate at 1/2000 dilution (green). Cells were fixed with 4% paraformaldehyde and permeabilized with 0.1% Triton X 100 for ten minutes, and blocked with 1% BSA for one hour at room temperature. Nuclei were counterstained with DAPI (blue). F-actin was stained with Rhodamine Phalloidin (red).

Negative controls are untreated A431 cells (e) and a secondary only antibody control (f).



Immunocytochemistry/ Immunofluorescence - Anti-Protein phosphatase 1 inhibitor subunit 2 (phospho T72) antibody (ab27850)

Immunocytochemistry/Immunofluorescence analysis of HeLa cells staining Protein phosphatase 1 inhibitor subunit 2 with ab27850 (green). Cells were grown on a chamber slide and fixed in cold 10% trichloroacetic acid for 10 minutes, rinsed in TBS and permeabilized with 0.1% Triton-X-100 for 15 minutes.

Please note: All products are "FOR RESEARCH USE ONLY. NOT FOR USE IN DIAGNOSTIC PROCEDURES"

Our Abpromise to you: Quality guaranteed and expert technical support

- Replacement or refund for products not performing as stated on the datasheet
- Valid for 12 months from date of delivery
- Response to your inquiry within 24 hours
- We provide support in Chinese, English, French, German, Japanese and Spanish
- Extensive multi-media technical resources to help you
- We investigate all quality concerns to ensure our products perform to the highest standards

If the product does not perform as described on this datasheet, we will offer a refund or replacement. For full details of the Abpromise, please visit <https://www.abcam.com/abpromise> or contact our technical team.

Terms and conditions

- Guarantee only valid for products bought direct from Abcam or one of our authorized distributors