

Product datasheet

Anti-PRPF4 antibody [EPR17206(B)] ab201684

Recombinant RabMAb

8 Images

Overview

Product name	Anti-PRPF4 antibody [EPR17206(B)]
Description	Rabbit monoclonal [EPR17206(B)] to PRPF4
Host species	Rabbit
Tested applications	Suitable for: Flow Cyt (Intra), WB, IHC-P, ICC/IF, IP
Species reactivity	Reacts with: Human
Immunogen	Synthetic peptide. This information is proprietary to Abcam and/or its suppliers.
Positive control	WB: HeLa, SW480, Raji and Jurkat whole cell lysates; Human fetal spleen lysate. IHC-P: Human cervix carcinoma tissue. ICC/IF: HeLa and MCF7 cells. IP and Flow Cyt (intra): HeLa whole cell lysate.
General notes	<p>This product is a recombinant monoclonal antibody, which offers several advantages including:</p> <ul style="list-style-type: none"> - High batch-to-batch consistency and reproducibility - Improved sensitivity and specificity - Long-term security of supply - Animal-free production <p>For more information see here.</p> <p>Our RabMAb[®] technology is a patented hybridoma-based technology for making rabbit monoclonal antibodies. For details on our patents, please refer to RabMAb[®] patents.</p>

Properties

Form	Liquid
Storage instructions	Shipped at 4°C. Store at +4°C short term (1-2 weeks). Upon delivery aliquot. Store at -20°C long term. Avoid freeze / thaw cycle.
Storage buffer	<p>pH: 7.2</p> <p>Preservative: 0.01% Sodium azide</p> <p>Constituents: 59% PBS, 40% Glycerol (glycerin, glycerine), 0.05% BSA</p>
Purity	Protein A purified
Clonality	Monoclonal
Clone number	EPR17206(B)

Isotype

IgG

Applications

The Abpromise guarantee

Our **Abpromise guarantee** covers the use of ab201684 in the following tested applications.

The application notes include recommended starting dilutions; optimal dilutions/concentrations should be determined by the end user.

Application	Abreviews	Notes
Flow Cyt (Intra)		1/50.
WB		1/5000. Detects a band of approximately 58 kDa (predicted molecular weight: 58 kDa).
IHC-P		1/3000. Perform heat mediated antigen retrieval with Tris/EDTA buffer pH 9.0 before commencing with IHC staining protocol.
ICC/IF		1/1200.
IP		1/40.

Target

Function

Participates in pre-mRNA splicing. Part of the U4/U5/U6 tri-snRNP complex, one of the building blocks of the spliceosome.

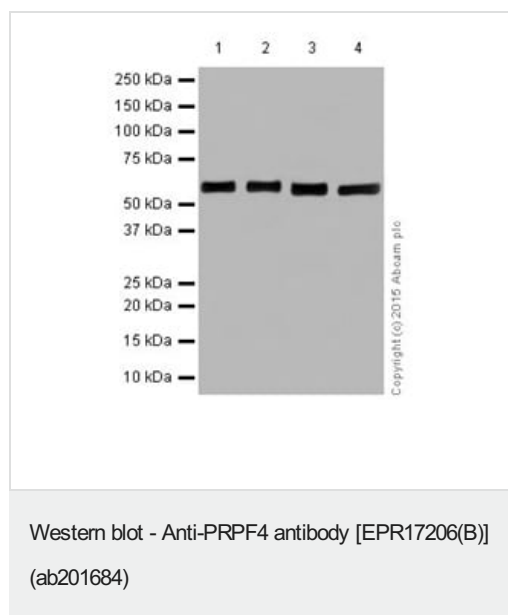
Sequence similarities

Contains 7 WD repeats.

Cellular localization

Nucleus speckle. Colocalizes with spliceosomal snRNPs.

Images



All lanes : Anti-PRPF4 antibody [EPR17206(B)] (ab201684) at 1/5000 dilution

Lane 1 : HeLa (Human epithelial cells from cervix adenocarcinoma) whole cell lysate

Lane 2 : SW480 (Human colon adenocarcinoma cell line) whole cell lysate

Lane 3 : Raji (Human Burkitt's lymphoma cell line) whole cell lysate

Lane 4 : Jurkat (Human T cell leukemia cells from peripheral blood) whole cell lysate

Lysates/proteins at 20 µg per lane.

Secondary

All lanes : Goat Anti-Rabbit IgG, (H+L), Peroxidase conjugated at

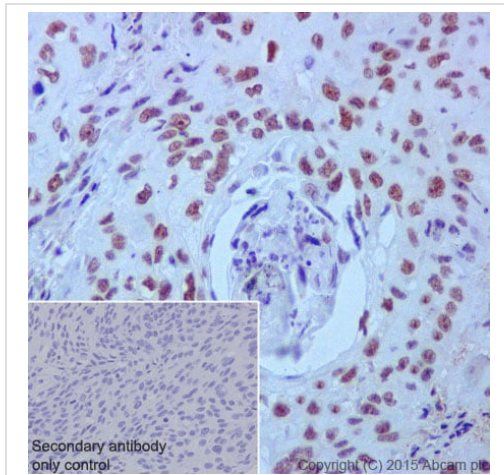
1/1000 dilution

Predicted band size: 58 kDa

Observed band size: 58 kDa

Exposure time: 3 minutes

Blocking/Dilution buffer: 5% NFDM/TBST.

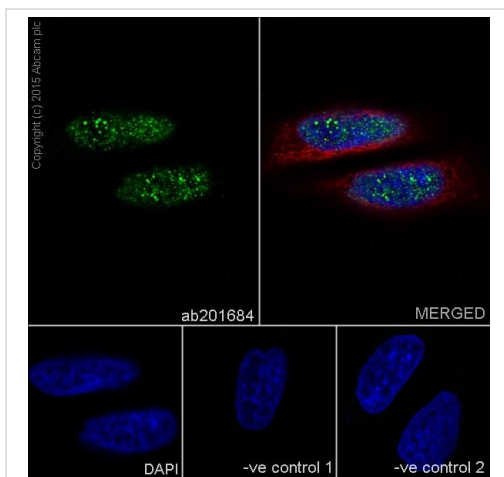


Immunohistochemistry (Formalin/PFA-fixed paraffin-embedded sections) - Anti-PRPF4 antibody [EPR17206(B)] (ab201684)

Immunohistochemical analysis of paraffin-embedded Human cervix carcinoma tissue labeling PRPF4 with ab201684 at 1/3000 dilution, followed by Goat Anti-Rabbit IgG H&L (HRP) ([ab97051](#)) secondary antibody at 1/500 dilution. Nuclear staining on Human cervix carcinoma tissue is observed. Counter stained with Hematoxylin.

Secondary antibody only control: Used PBS instead of primary antibody, secondary antibody is Goat Anti-Rabbit IgG H&L (HRP) ([ab97051](#)) at 1/500 dilution.

Perform heat mediated antigen retrieval with Tris/EDTA buffer pH 9.0 before commencing with IHC staining protocol.



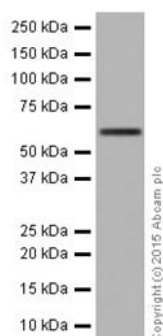
Immunocytochemistry/ Immunofluorescence - Anti-PRPF4 antibody [EPR17206(B)] (ab201684)

Immunofluorescent analysis of 4% paraformaldehyde-fixed, 0.1% Triton X-100 permeabilized HeLa (Human epithelial cells from cervix adenocarcinoma) cells labeling PRPF4 with ab201684 at 1/1200 dilution, followed by Goat anti-rabbit IgG (Alexa Fluor® 488) ([ab150077](#)) secondary antibody at 1/500 dilution (green). Confocal image showing nuclear staining on HeLa cell line. The nuclear counter stain is DAPI (blue). Tubulin is detected with [ab7291](#) (anti-Tubulin mouse mAb) at 1/1000 dilution and [ab150120](#) (AlexaFluor®594 Goat anti-Mouse secondary) at 1/500 dilution (red).

The negative controls are as follows:

-ve control 1: ab201684 at 1/1200 dilution followed by [ab150120](#) (AlexaFluor®594 Goat anti-Mouse secondary) at 1/500 dilution.

-ve control 2: [ab7291](#) (anti-Tubulin mouse mAb) at 1/1000 dilution followed by [ab150077](#) (Alexa Fluor®488 Goat Anti-Rabbit IgG H&L) at 1/500 dilution.



Western blot - Anti-PRPF4 antibody [EPR17206(B)] (ab201684)

Anti-PRPF4 antibody [EPR17206(B)] (ab201684) at 1/5000 dilution + Human fetal spleen lysate at 10 µg

Secondary

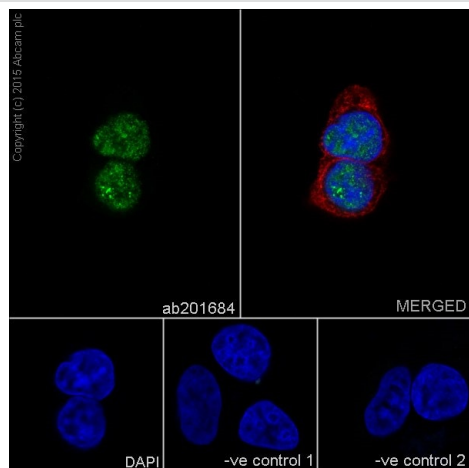
Anti-Rabbit IgG (HRP), specific to the non-reduced form of IgG at 1/1000 dilution

Predicted band size: 58 kDa

Observed band size: 58 kDa

Exposure time: 3 minutes

Blocking/Dilution buffer: 5% NFDM/TBST.

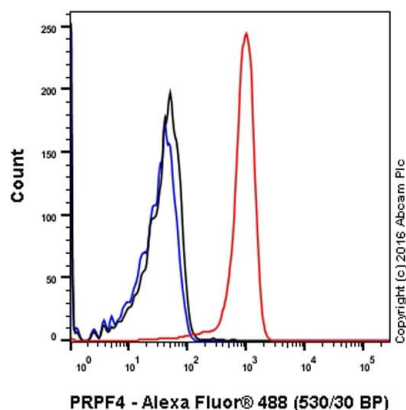


Immunocytochemistry/ Immunofluorescence - Anti-PRPF4 antibody [EPR17206(B)] (ab201684)

Immunofluorescent analysis of 4% paraformaldehyde-fixed, 0.1% Triton X-100 permeabilized MCF7 (Human breast adenocarcinoma cell line) cells labeling PRPF4 with ab201684 at 1/1200 dilution, followed by Goat anti-rabbit IgG (Alexa Fluor® 488) (**ab150077**) secondary antibody at 1/500 dilution (green). Confocal image showing nuclear staining on MCF7 cell line. The nuclear counter stain is DAPI (blue). Tubulin is detected with **ab7291** (anti-Tubulin mouse mAb) at 1/1000 dilution and **ab150120** (AlexaFluor®594 Goat anti-Mouse secondary) at 1/500 dilution (red).

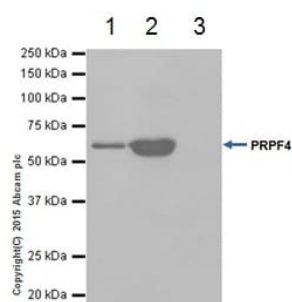
The negative controls are as follows:

-ve control 1: ab201684 at 1/1200 dilution followed by **ab150120** (AlexaFluor®594 Goat anti-Mouse secondary) at 1/500 dilution.
 -ve control 2: **ab7291** (anti-Tubulin mouse mAb) at 1/1000 dilution followed by **ab150077** (Alexa Fluor®488 Goat Anti-Rabbit IgG H&L) at 1/500 dilution.



Flow Cytometry (Intracellular) - Anti-PRPF4 antibody
[EPR17206(B)] (ab201684)

Intracellular Flow Cytometry analysis of HeLa cells labelling PRPF4 (red) with purified ab201684 at dilution of 1/50. The secondary antibody used was Alexa Fluor® 488 goat-anti-rabbit IgG (1/2000). Cells were fixed with 4% paraformaldehyde and permeabilised with 90% methanol. Isotype control antibody was Rabbit monoclonal IgG (black). The blue line shows cells without incubation with primary antibody and secondary antibody.



Immunoprecipitation - Anti-PRPF4 antibody
[EPR17206(B)] (ab201684)

PRPF4 was immunoprecipitated from 1mg of HeLa (Human epithelial cells from cervix adenocarcinoma) whole cell lysate with ab201684 at 1/40 dilution. Western blot was performed from the immunoprecipitate using ab201684 at 1/1000 dilution. VeriBlot for IP Detection Reagent (HRP) (**ab131366**) was used for detection at 1/1500 dilution.

Lane 1: HeLa whole cell lysate 10 µg (Input). Lane 2: ab201684 IP in HeLa whole cell lysate. Lane 3: Rabbit monoclonal IgG (**ab172730**) instead of ab201684 in HeLa whole cell lysate. Blocking and dilution buffer and concentration: 5% NFDm/TBST.

Exposure time: 5 seconds.

Why choose a recombinant antibody?



Research with confidence
Consistent and reproducible results



Long-term and scalable supply
Recombinant technology



Success from the first experiment
Confirmed specificity



Ethical standards compliant
Animal-free production

Anti-PRPF4 antibody [EPR17206(B)] (ab201684)

Please note: All products are "FOR RESEARCH USE ONLY. NOT FOR USE IN DIAGNOSTIC PROCEDURES"

Our Abpromise to you: Quality guaranteed and expert technical support

- Replacement or refund for products not performing as stated on the datasheet
- Valid for 12 months from date of delivery
- Response to your inquiry within 24 hours
- We provide support in Chinese, English, French, German, Japanese and Spanish
- Extensive multi-media technical resources to help you
- We investigate all quality concerns to ensure our products perform to the highest standards

If the product does not perform as described on this datasheet, we will offer a refund or replacement. For full details of the Abpromise, please visit <https://www.abcam.com/abpromise> or contact our technical team.

Terms and conditions

- Guarantee only valid for products bought direct from Abcam or one of our authorized distributors