

Product datasheet

Anti-PRPF8/Prp8 antibody [EPR15228] ab190347

Recombinant RabMAb

[1 References](#) [6 Images](#)

Overview

Product name	Anti-PRPF8/Prp8 antibody [EPR15228]
Description	Rabbit monoclonal [EPR15228] to PRPF8/Prp8
Host species	Rabbit
Tested applications	Suitable for: WB, IHC-P
Species reactivity	Reacts with: Mouse, Rat, Human
Immunogen	Synthetic peptide. This information is proprietary to Abcam and/or its suppliers.
Positive control	HeLa, HepG2, K562, 293T, mouse RAW 264.7 and rat PC12 cell lysates. Human ovarian carcinoma and rat spleen tissues.
General notes	<p>This product is a recombinant monoclonal antibody, which offers several advantages including:</p> <ul style="list-style-type: none"> - High batch-to-batch consistency and reproducibility - Improved sensitivity and specificity - Long-term security of supply - Animal-free production <p>For more information see here.</p> <p>Our RabMAb[®] technology is a patented hybridoma-based technology for making rabbit monoclonal antibodies. For details on our patents, please refer to RabMAb[®] patents.</p>

Properties

Form	Liquid
Storage instructions	Shipped at 4°C. Store at +4°C short term (1-2 weeks). Upon delivery aliquot. Store at -20°C long term. Avoid freeze / thaw cycle.
Storage buffer	<p>pH: 7.20</p> <p>Preservative: 0.01% Sodium azide</p> <p>Constituents: 59% PBS, 40% Glycerol (glycerin, glycerine), 0.05% BSA</p>
Purity	Protein A purified
Clonality	Monoclonal
Clone number	EPR15228
Isotype	IgG

Applications

The Abpromise guarantee

Our **Abpromise guarantee** covers the use of ab190347 in the following tested applications.

The application notes include recommended starting dilutions; optimal dilutions/concentrations should be determined by the end user.

Application	Abreviews	Notes
WB		1/1000 - 1/10000. Detects a band of approximately 274 kDa (predicted molecular weight: 274 kDa).
IHC-P		1/50 - 1/100. Perform heat mediated antigen retrieval with Tris/EDTA buffer pH 9.0 before commencing with IHC staining protocol.

Target

Function

Central component of the spliceosome, which may play a role in aligning the pre-mRNA 5'- and 3'-exons for ligation. Interacts with U5 snRNA, and with pre-mRNA 5'-splice sites in B spliceosomes and 3'-splice sites in C spliceosomes.

Tissue specificity

Widely expressed.

Involvement in disease

Defects in PRPF8 are the cause of retinitis pigmentosa type 13 (RP13) [MIM:600059]. RP leads to degeneration of retinal photoreceptor cells. Patients typically have night vision blindness and loss of midperipheral visual field. As their condition progresses, they lose their far peripheral visual field and eventually central vision as well. RP13 inheritance is autosomal dominant.

Sequence similarities

Contains 1 MPN (JAB/Mov34) domain.

Domain

The MPN domain has structural similarity with viral ribonucleases and RNase H, but unlike RNases, it does not bind any metal ions.

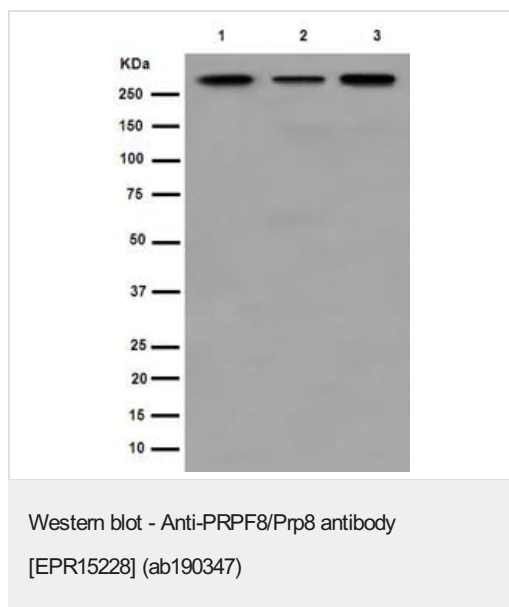
Post-translational modifications

Phosphorylated upon DNA damage, probably by ATM or ATR.

Cellular localization

Nucleus speckle.

Images



All lanes : Anti-PRPF8/Prp8 antibody [EPR15228] (ab190347) at 1/5000 dilution

Lane 1 : HeLa cell lysate

Lane 2 : HepG2 cell lysate

Lane 3 : K562 cell lysate

Lysates/proteins at 10 µg per lane.

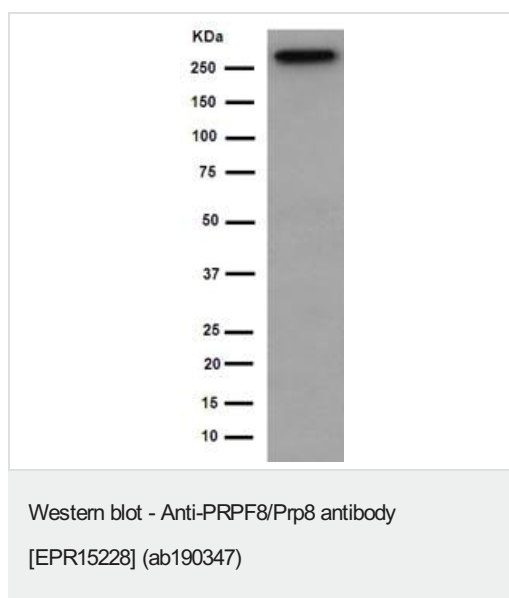
Secondary

All lanes : goat anti-rabbit IgG, (H+L), peroxidase conjugated at 1/1000 dilution

Developed using the ECL technique.

Predicted band size: 274 kDa

Observed band size: 274 kDa



Anti-PRPF8/Prp8 antibody [EPR15228] (ab190347) at 1/20000 dilution + 293T cell lysate at 10 µg

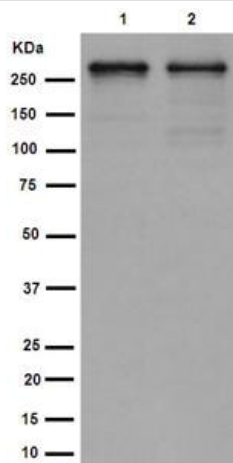
Secondary

goat anti-rabbit IgG, (H+L), peroxidase conjugated at 1/1000 dilution

Developed using the ECL technique.

Predicted band size: 274 kDa

Observed band size: 274 kDa



Western blot - Anti-PRPF8/Prp8 antibody
[EPR15228] (ab190347)

All lanes : Anti-PRPF8/Prp8 antibody [EPR15228] (ab190347) at 1/1000 dilution

Lane 1 : mouse RAW 264.7 cell lysate

Lane 2 : rat PC12 cell lysate

Lysates/proteins at 10 µg per lane.

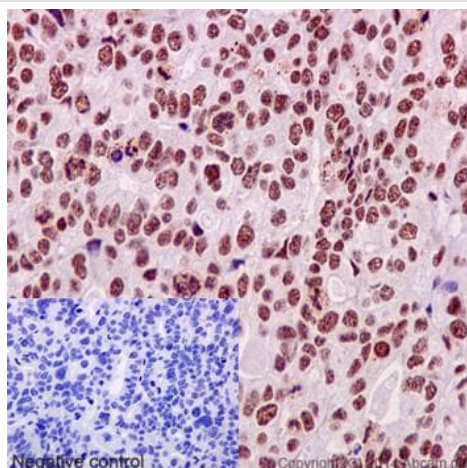
Secondary

All lanes : goat anti-rabbit IgG, (H+L), peroxidase conjugated at 1/1000 dilution

Developed using the ECL technique.

Predicted band size: 274 kDa

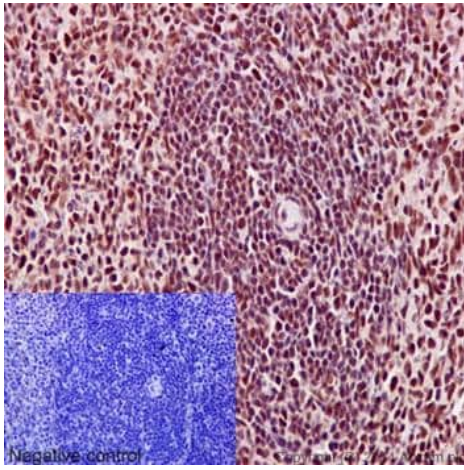
Observed band size: 274 kDa



Immunohistochemistry (Formalin/PFA-fixed paraffin-embedded sections) - Anti-PRPF8/Prp8 antibody
[EPR15228] (ab190347)

Immunohistochemical analysis of paraffin-embedded, Human ovarian carcinoma tissue labeling PRPF8/Prp8 with ab190347 at a 1/100 dilution. Counter stained with hematoxylin. Negative control also shown.

Perform heat mediated antigen retrieval with Tris/EDTA buffer pH 9.0 before commencing with IHC staining protocol.

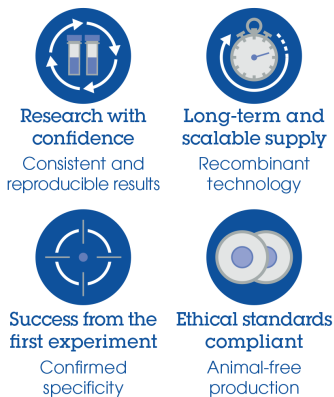


Immunohistochemical analysis of paraffin-embedded, rat spleen tissue labeling PRPF8/Prp8 with ab190347 at a 1/100 dilution. Counter stained with hematoxylin. Negative control also shown.

Perform heat mediated antigen retrieval with Tris/EDTA buffer pH 9.0 before commencing with IHC staining protocol.

Immunohistochemistry (Formalin/PFA-fixed paraffin-embedded sections) - Anti-PRPF8/Prp8 antibody [EPR15228] (ab190347)

Why choose a recombinant antibody?



Anti-PRPF8/Prp8 antibody [EPR15228] (ab190347)

Please note: All products are "FOR RESEARCH USE ONLY. NOT FOR USE IN DIAGNOSTIC PROCEDURES"

Our Abpromise to you: Quality guaranteed and expert technical support

- Replacement or refund for products not performing as stated on the datasheet
- Valid for 12 months from date of delivery
- Response to your inquiry within 24 hours
- We provide support in Chinese, English, French, German, Japanese and Spanish
- Extensive multi-media technical resources to help you
- We investigate all quality concerns to ensure our products perform to the highest standards

If the product does not perform as described on this datasheet, we will offer a refund or replacement. For full details of the Abpromise, please visit <https://www.abcam.com/abpromise> or contact our technical team.

Terms and conditions

- Guarantee only valid for products bought direct from Abcam or one of our authorized distributors