


Product datasheet

Anti-PSF1 antibody ab183524

[2 References](#) [2 Images](#)

Overview

Product name	Anti-PSF1 antibody
Description	Rabbit polyclonal to PSF1
Host species	Rabbit
Tested applications	Suitable for: WB, IP
Species reactivity	Reacts with: Human Predicted to work with: Chicken, Turkey, Chimpanzee, Macaque monkey, Rhesus monkey, Gorilla, Common marmoset, Orangutan 
Immunogen	Synthetic peptide within Human PSF1 aa 146-196. The exact sequence is proprietary. NP_066545.3. Database link: Q14691
Positive control	HeLa, 293T and Jurkat cell lysates.
General notes	<p>The Life Science industry has been in the grips of a reproducibility crisis for a number of years. Abcam is leading the way in addressing this with our range of recombinant monoclonal antibodies and knockout edited cell lines for gold-standard validation. Please check that this product meets your needs before purchasing.</p> <p>If you have any questions, special requirements or concerns, please send us an inquiry and/or contact our Support team ahead of purchase. Recommended alternatives for this product can be found below, along with publications, customer reviews and Q&As</p>

Properties

Form	Liquid
Storage instructions	Shipped at 4°C. Store at +4°C short term (1-2 weeks). Upon delivery aliquot. Store at -20°C long term. Avoid freeze / thaw cycle.
Storage buffer	pH: 7 Preservative: 0.09% Sodium azide Constituent: 99% Tris citrate/phosphate
Purity	pH 7 to 8 Immunogen affinity purified
Purification notes	ab183524 was affinity purified using an epitope specific to PSF1 immobilized on solid support.

Clonality	Polyclonal
Isotype	IgG

Applications

The Abpromise guarantee Our **Abpromise guarantee** covers the use of ab183524 in the following tested applications. The application notes include recommended starting dilutions; optimal dilutions/concentrations should be determined by the end user.

Application	Abreviews	Notes
WB		1/1000 - 1/5000. Predicted molecular weight: 23 kDa.
IP		Use at 2-10 µg/mg of lysate.

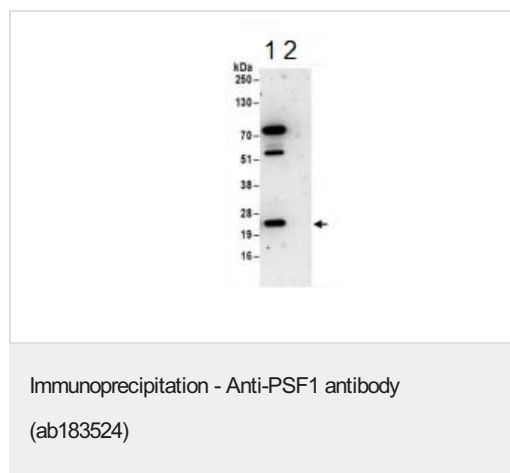
Target

Function The GINS complex plays an essential role in the initiation of DNA replication, and progression of DNA replication forks. GINS complex seems to bind preferentially to single-stranded DNA. GINS1 is essential for function.

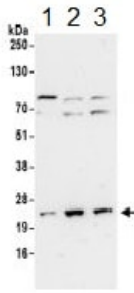
Sequence similarities Belongs to the GINS1/PSF1 family.

Cellular localization Nucleus.

Images



Detection of PSF1 in Immunoprecipitates of HeLa whole cell lysates (1 mg for IP, 20% of IP loaded) using ab183524 at 6 µg/mg lysate for IP (Lane 1). For WB detection ab183524 was used at 1 µg/ml. Lane 2 represents control IgG IP.



Western blot - Anti-PSF1 antibody (ab183524)

All lanes : Anti-PSF1 antibody (ab183524) at 0.4 µg/ml

Lane 1 : HeLa whole cell lysate

Lane 2 : 293T whole cell lysate

Lane 3 : Jurkat whole cell lysate

Lysates/proteins at 50 µg per lane.

Developed using the ECL technique.

Predicted band size: 23 kDa

Exposure time: 30 seconds

Please note: All products are "FOR RESEARCH USE ONLY. NOT FOR USE IN DIAGNOSTIC PROCEDURES"

Our Abpromise to you: Quality guaranteed and expert technical support

- Replacement or refund for products not performing as stated on the datasheet
- Valid for 12 months from date of delivery
- Response to your inquiry within 24 hours
- We provide support in Chinese, English, French, German, Japanese and Spanish
- Extensive multi-media technical resources to help you
- We investigate all quality concerns to ensure our products perform to the highest standards

If the product does not perform as described on this datasheet, we will offer a refund or replacement. For full details of the Abpromise, please visit <https://www.abcam.com/abpromise> or contact our technical team.

Terms and conditions

- Guarantee only valid for products bought direct from Abcam or one of our authorized distributors